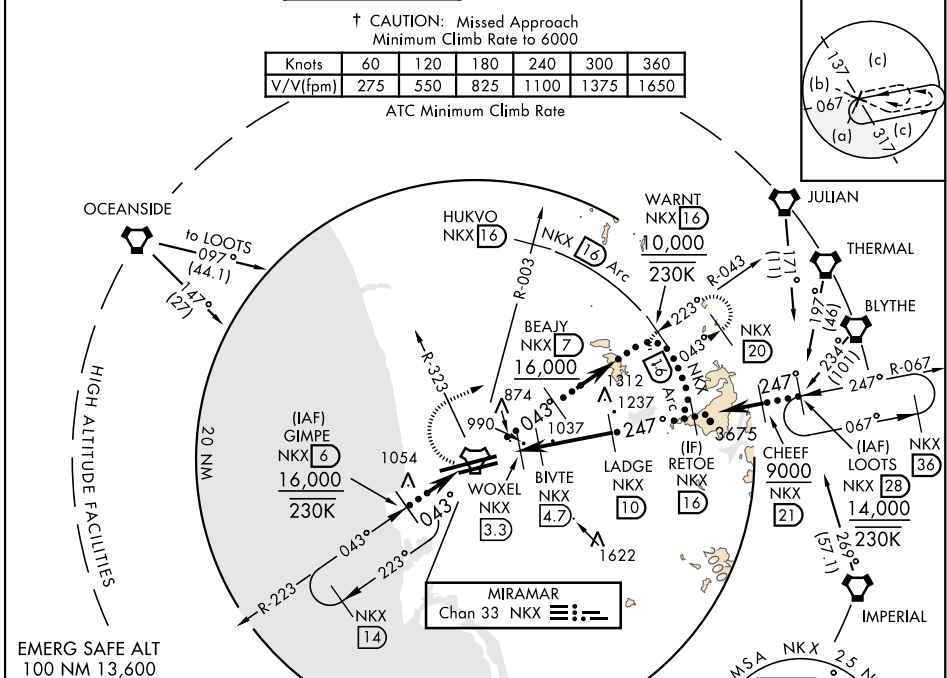


HI-TACAN RWY 24R

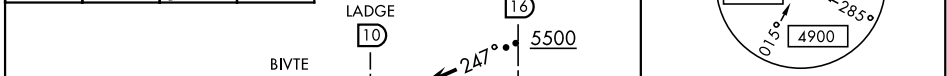
TACAN NKX Chan 33	APCH CRS 247°	Rwy Idg 24R 12,000 24L 8001 TDZE 24R 475 24L 477 Arprt Elev 477	JAL-903 [USN] MIRAMAR MCAS (JOE FOSS FLD) (KNKX)
-----------------------------	-------------------------	---	---

† MISSED APPROACH: Climb to 1500, then climbing right turn to 7000 via NKX TACAN R-003 to HUKVO. Arc NE of NKX via 1.6 mile arc to WARNT and hold. Cross R-323 at 3000 mandatory, cross HUKVO at 6000 mandatory.

ATIS ★ 133.475 352.0	SOCAL APP CON 132.2 269.1	FOSS TOWER ★ 135.2 298.925 0	GND CON 128.625 307.325	CLNC DEL 125.975 254.325	ASR/ PAR	LA CENTER 291.7
--------------------------------	-------------------------------------	--	-----------------------------------	------------------------------------	-------------	---------------------------

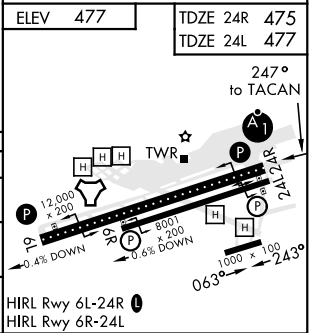


1500 ↑	cross NKX R-323 3000	7000 cross HUKVO NKX 16 6000	VGSI and descent angles not coincident.
-----------	-------------------------	---------------------------------------	---



ELEV 477	TDZE 24R 475 TDZE 24L 477
----------	------------------------------

CATEGORY	C	D	E
S-24R *	1140-1½	665 (700-1½)	
SIDE-STEP 24L	1140-1⅞	663 (700-1⅞)	
CIRCLING **	1140-1⅞ 663 (700-1⅞)	1180-2¼ 703 (800-2¼)	1360-3 883 (900-3)



HI-TACAN RWY 24R

SW-3, 25 FEB 2021 to 25 MAR 2021

SW-3, 25 FEB 2021 to 25 MAR 2021