

# TACAN RWY 32L

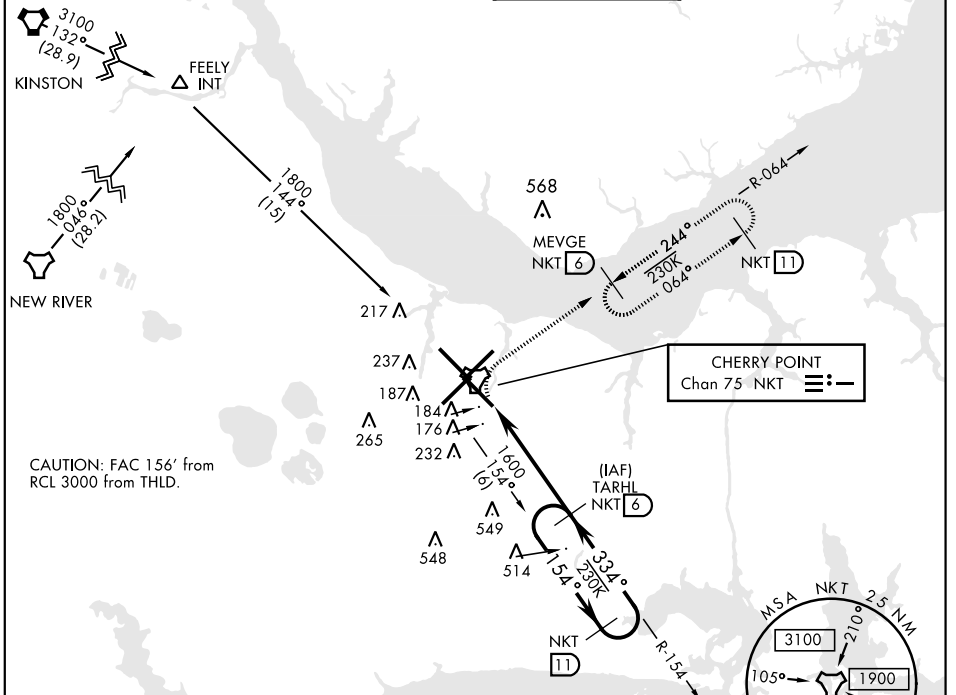
TACAN NKT Chan 75	APCH CRS 334°	Rwy ldg 7551 TDZE 26 Arprt Elev 29	AL-471 [USN]	CHERRY POINT MCAS (CUNNINGHAM FLD) (KNKT)
----------------------	------------------	---	--------------	---

▼ \* When ALS inop, increase vis CAT AB to 1 mile, CAT CD to 1 3/8 miles.

ALS F-1 (A1)

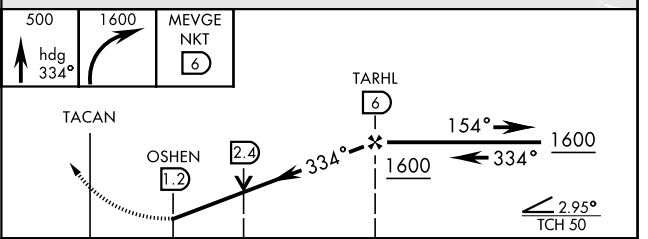
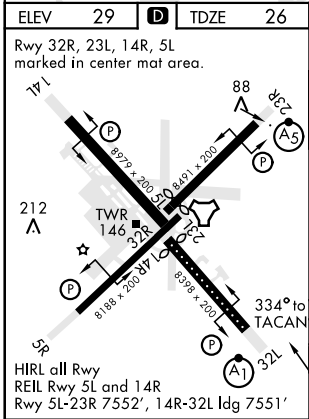
MISSED APPROACH: Climb on hdg 334°. At 500 climbing right turn to 1600 direct MEVGE and hold.

ATIS 127.475 244.875	CHERRY POINT APP CON (E) 119.75 360.775 (abv 2600') (E) 132.575 299.6 (at/blw 2600') (W) 119.35 377.175 (N) 124.1 268.7	CHERRY POINT TOWER 121.3 340.2	GND CON 128.625 239.025	CLNC DEL 125.95 316.125	ASR/ PAR
----------------------------	--	-----------------------------------	-------------------------------	-------------------------------	-------------



CAUTION: FAC 156' from RCL 3000 from THLD.

EMERG SAFE ALT 100 NM 4100



CATEGORY	A	B	C	D
S-32L *	480-1/2	454 (500-1/2)	480-7/8 454 (500-7/8)	600-2
CIRCLING	580-1	551 (600-1)	571 (600-1/2)	571 (600-2)

# TACAN RWY 32L

SE-2, 25 FEB 2021 to 25 MAR 2021

SE-2, 25 FEB 2021 to 25 MAR 2021