

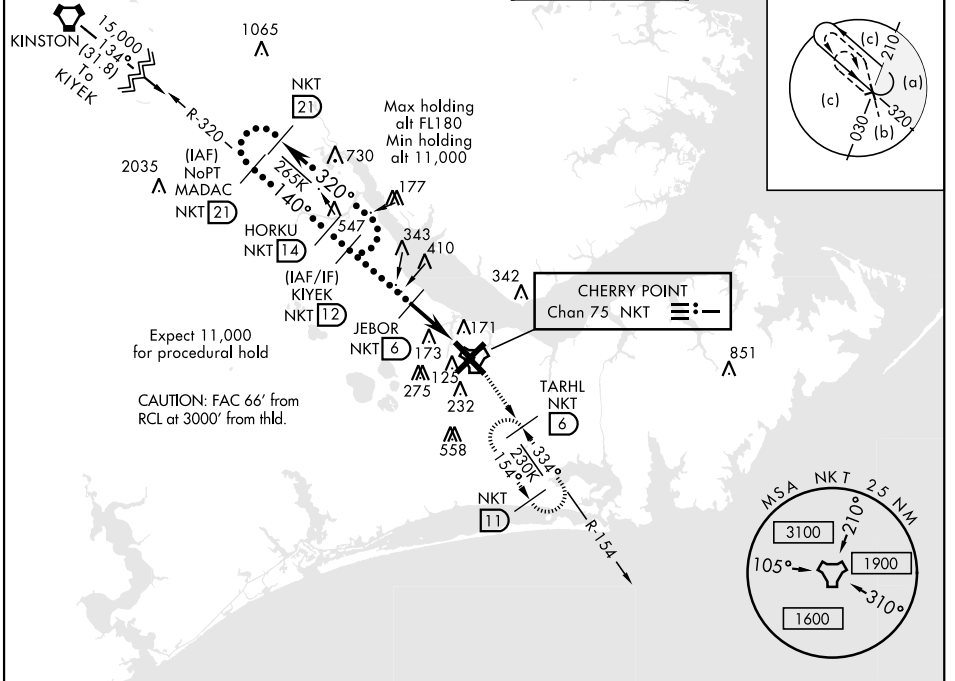
CHERRY POINT, NORTH CAROLINA

HI-TACAN Z RWY 14L

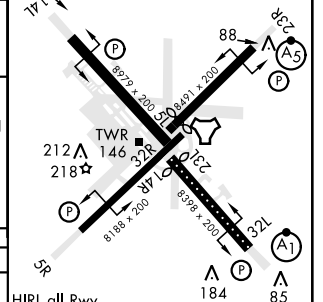
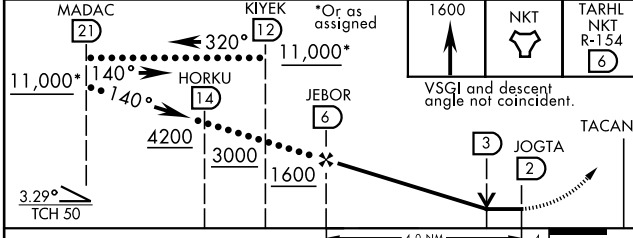
TACAN NKT Chan 75	APCH CRS 140°	Rwy Idg TDZE Arpt Elev 8979 26 29	JAL-471 [USN] CHERRY POINT MCAS (CUNNINGHAM FLD) (KNKT)
-----------------------------	-------------------------	---	---

MISSED APPROACH: Climb to 1600 to NKT TACAN then intercept NKT R-154 to TARHL and hold.

ATIS 127.475 244.875	CHERRY POINT APP CON 119.75 360.775 (E) (abv 2600') 132.575 299.6 (E) (at/blw 2600') 119.35 377.175 (E) 124.1 268.7 (N)	CHERRY POINT TOWER 121.3 340.2	GND CON 128.625 239.025	CLNC DEL 125.95 316.125	ASR/ PAR
--	--	---	---	---	-------------



ELEV 29	TDZE 26
140° to TACAN	Rwy 32R, 23L, 14R, 5L marked in center mat area.



CATEGORY	C	D	E
S-14L	500-1 $\frac{3}{8}$	474	(500-1 $\frac{3}{8}$)
CIRCLING	600-1 $\frac{1}{2}$ 571 (600-1 $\frac{1}{2}$)	600-2 571 (600-2)	700-2 $\frac{1}{2}$ 671 (700-2 $\frac{1}{2}$)

HIRL all Rwy
REIL Rwy 5L and 14R
Rwy 5L-23R Idg 7552',
14R-32L Idg 7551'

CHERRY POINT, NORTH CAROLINA 34° 54' N-76° 53' W CHERRY POINT MCAS (CUNNINGHAM FLD) (KNKT)

Amdt 7 05NOV20

HI-TACAN Z RWY 14L

SE-2, 25 FEB 2021 to 25 MAR 2021

SE-2, 25 FEB 2021 to 25 MAR 2021