

# HI-TACAN RWY 10

TACAN Chan <b>86Y</b>	APCH CRS <b>097°</b>	Rwy ldg <b>8071'</b> TDZE <b>14'</b> Arprt Elev <b>15'</b>
--------------------------	-------------------------	--

JAL-290 [UN]

NORFOLK NS (CHAMBERS FIELD) (KNGU)

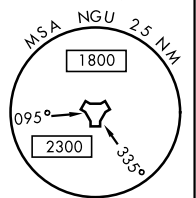
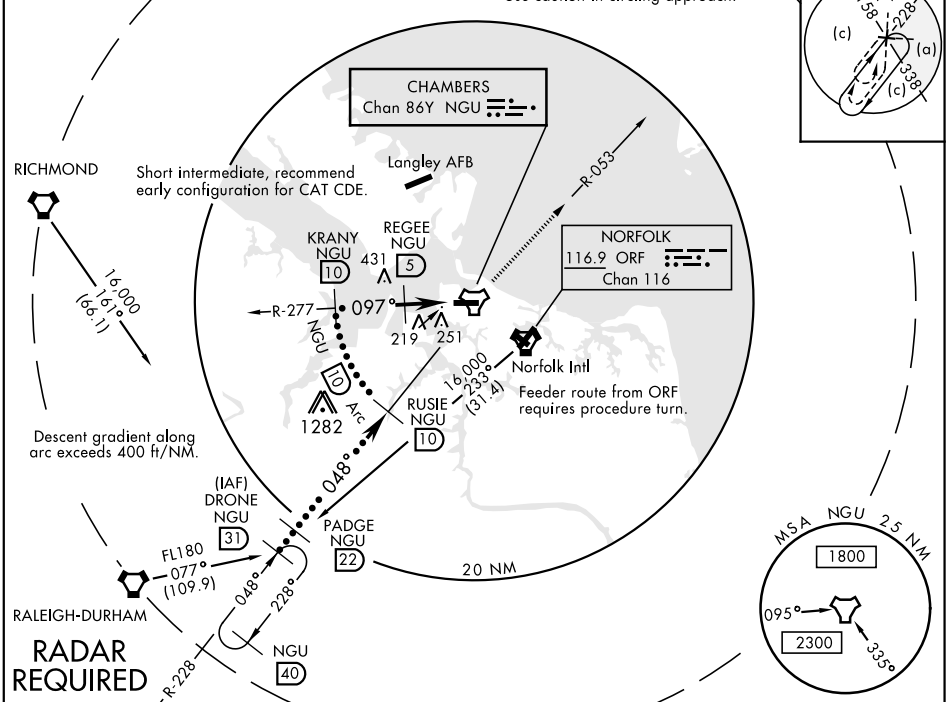
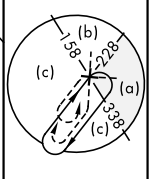
**▽** \* When ALS inop, increase CAT CDE vis to 1 $\frac{1}{2}$  miles.  
\*\* Circling not authorized S of Rwy 10-28.



MISSED APPROACH: Climbing left turn to 2300 on NGU TACAN R-053 then as directed by ATC.

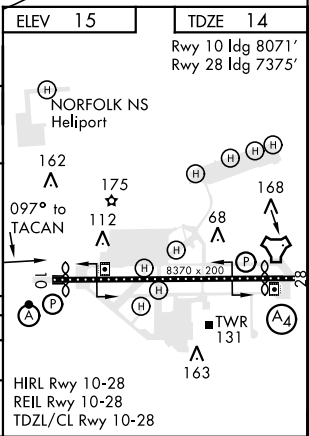
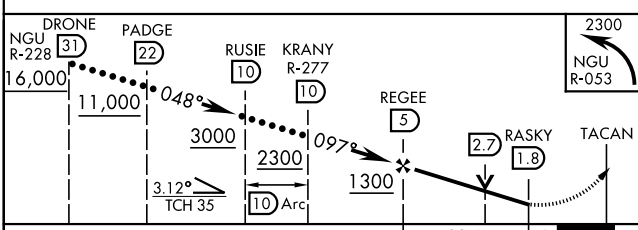
ATIS <b>118.425 342.0</b>	NORFOLK APP CON <b>118.9 353.7</b>	CHAMBERS TOWER <b>124.3 379.15</b>	GND CON <b>121.8 370.85</b>	ASR/PAR
------------------------------	---------------------------------------	---------------------------------------	--------------------------------	---------

FAC 393 ft from rwy CL at 3000 ft from thld. NORFOLK NS HELIPORT 1 NM NW  
Use caution in circling approach.



ELEV 15	TDZE 14
---------	---------

Rwy 10 ldg 8071'  
Rwy 28 ldg 7375'



CATEGORY	C	D	E
S-10 *	520-1	506 (600-1)	
** CIRCLING	560-1 $\frac{1}{2}$ 545 (600-1 $\frac{1}{2}$ )	580-2 565 (600-2)	700-2 $\frac{1}{2}$ 685 (700-2 $\frac{1}{2}$ )

HIRL Rwy 10-28  
REIL Rwy 10-28  
TDZL/CL Rwy 10-28

# HI-TACAN RWY 10

NE-3, 25 FEB 2021 to 25 MAR 2021

NE-3, 25 FEB 2021 to 25 MAR 2021