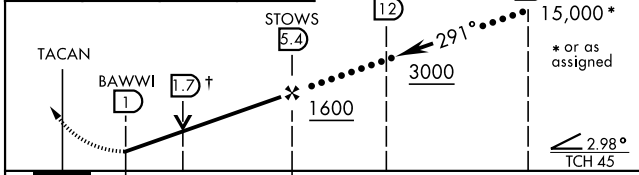
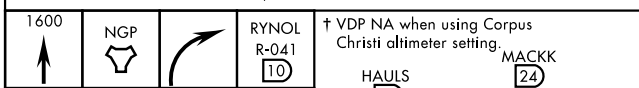
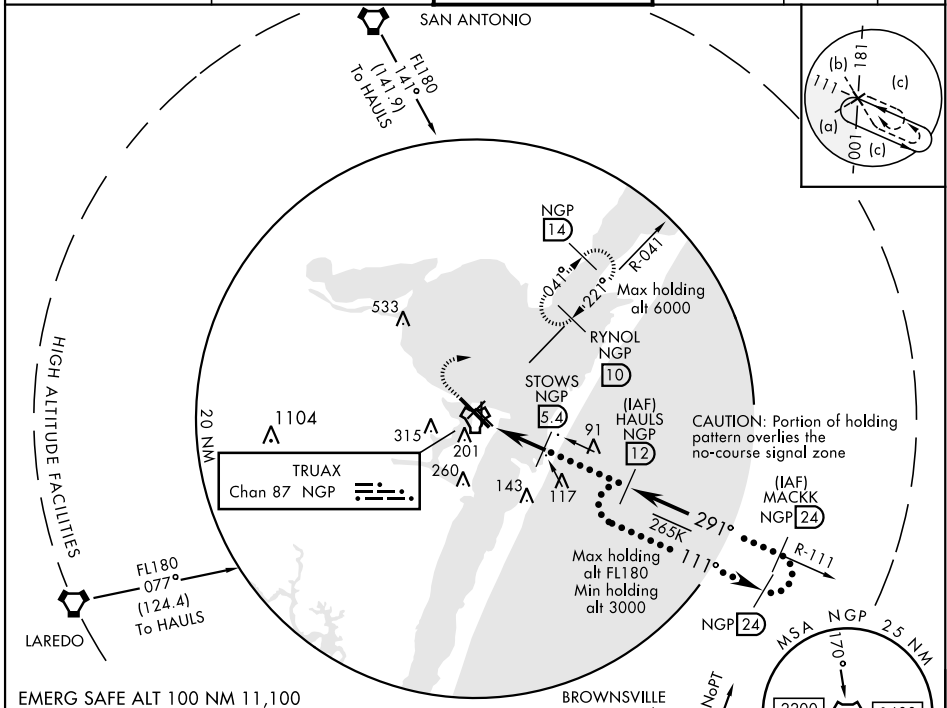


HI-TACAN RWY 31L

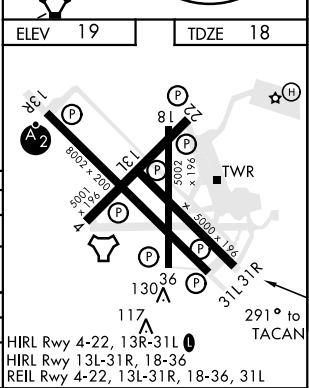
TACAN NGP Chan 87	APCH CRS 291°	Rwy Idg TDZE Arpt Elev 8002 18 19	JAL-98 [USN]	CORPUS CHRISTI NAS (TRUAX FLD) (KNGP)
-----------------------------	-------------------------	---	--------------	---------------------------------------

▽ When local altimeter setting not received, use Corpus Christi altimeter setting. MISSED APPROACH: Climb to 1600 direct TACAN and turn right to intercept R-041 to RYNOL and hold.

ATIS ★ 127.9 290.9	CORPUS CHRISTI APP CON 127.5 259.3	NAVY CORPUS TOWER ★ 134.85 0 340.2	GND CON 118.7 257.85	CLNC DEL 314.3	ASR/ PAR
------------------------------	--	--	--------------------------------	--------------------------	-------------



CATEGORY	C	D	E
S-31L	420-1 1/8	402 (500-1 1/8)	
CIRCLING	540-1 1/2 521 (600-1 1/2)	620-2 601 (700-2)	620-2 1/4 601 (700-2 1/4)
CORPUS CHRISTI ALTIMETER SETTING			
S-31L	460-1 3/8	442 (500-1 3/8)	
CIRCLING	580-1 1/2 561 (600-1 1/2)	660-2 641 (700-2)	660-2 1/4 641 (700-2 1/4)



CORPUS CHRISTI, TEXAS 27°42'N-97°17'W CORPUS CHRISTI NAS (TRUAX FLD) (KNGP)

HI-TACAN RWY 31L

SC-3, 25 FEB 2021 to 25 MAR 2021

SC-3, 25 FEB 2021 to 25 MAR 2021