

LAKEHURST, NEW JERSEY

# VOR or VOR/DME or TACAN Y RWY 33

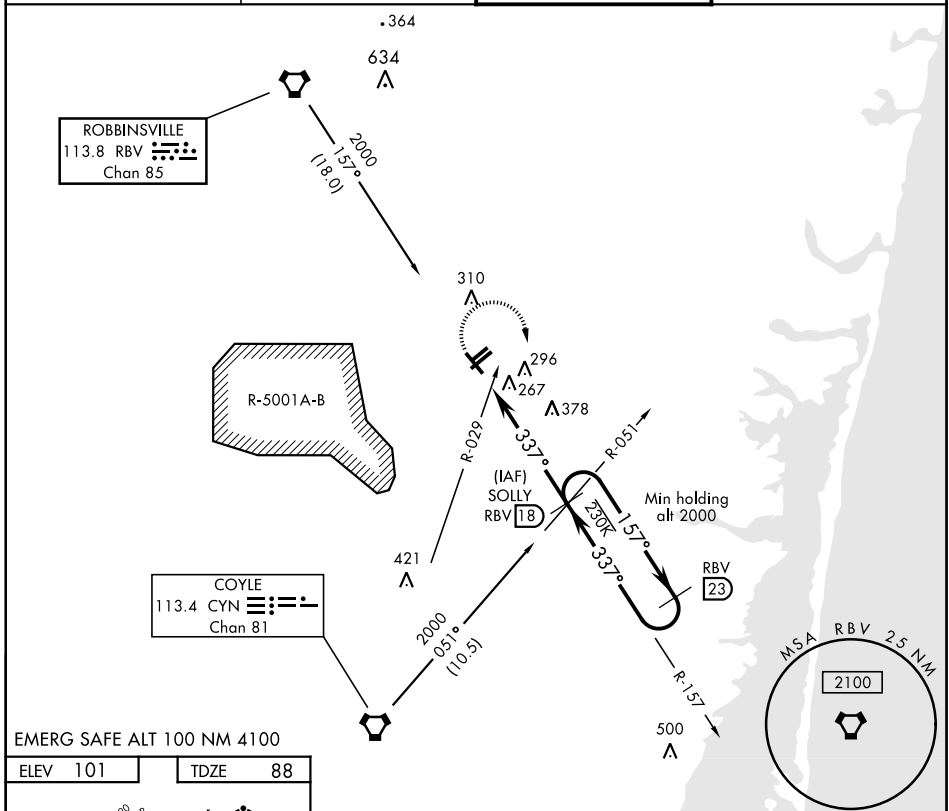
LAKEHURST MAXFIELD FLD,

(JOINT BASE MC GUIRE DIX LAKEHURST) (KNEL)

VORTAC RBV <b>113.8</b> Chan <b>85</b>	APCH CRS <b>337°</b>	Rwy ldg TDZE Arprt Elev <b>5002</b> <b>88</b> <b>101</b>
--	-------------------------	---

MISSED APPROACH: Climbing right turn to 2000, intercept RBV VORTAC R-157 to SOLLY and hold.

ATIS ★ <b>276.525</b>	MC GUIRE APP CON <b>126.475 363.8</b>	LAKEHURST TOWER ★ <b>127.775 360.2</b>	GND CON <b>118.375 307.05</b>
--------------------------	--	---	----------------------------------



EMERG SAFE ALT 100 NM 4100

ELEV 101	TDZE 88
HIRL Rwy 6-24 MIRL Rwy 063°-243° FAF to MAP 5.1 NM	
Knots	60 90 120 150 180
Min:Sec	5:06 3:24 2:33 2:02 1:42

2000 RBV R-157	SOLLY RBV (18)	SOLLY RBV R-157 (18) / CYN R-051	RBV R-157 (23)
VORTAC TOBME RBV R-157 (12.9) / CYN R-029		RBV (14)	
0.5 NM		5.1 NM	
CATEGORY	A	B	C D
S-33	660-1 572 (600-1)	660-1½ 572 (600-1½)	
CIRCLING	660-1 559 (600-1)	720-1 619 (700-1)	720-1¾ 619 (700-1¾) 720-2 619 (700-2)

LAKEHURST, NEW JERSEY  
Amdt 3 30JAN20

40°02'N-74°21'W LAKEHURST MAXFIELD FLD,  
(JOINT BASE MC GUIRE DIX LAKEHURST) (KNEL)

# VOR or VOR/DME or TACAN Y RWY 33

NE-2, 25 FEB 2021 to 25 MAR 2021

NE-2, 25 FEB 2021 to 25 MAR 2021