

VOR/DME or TACAN RWY 22

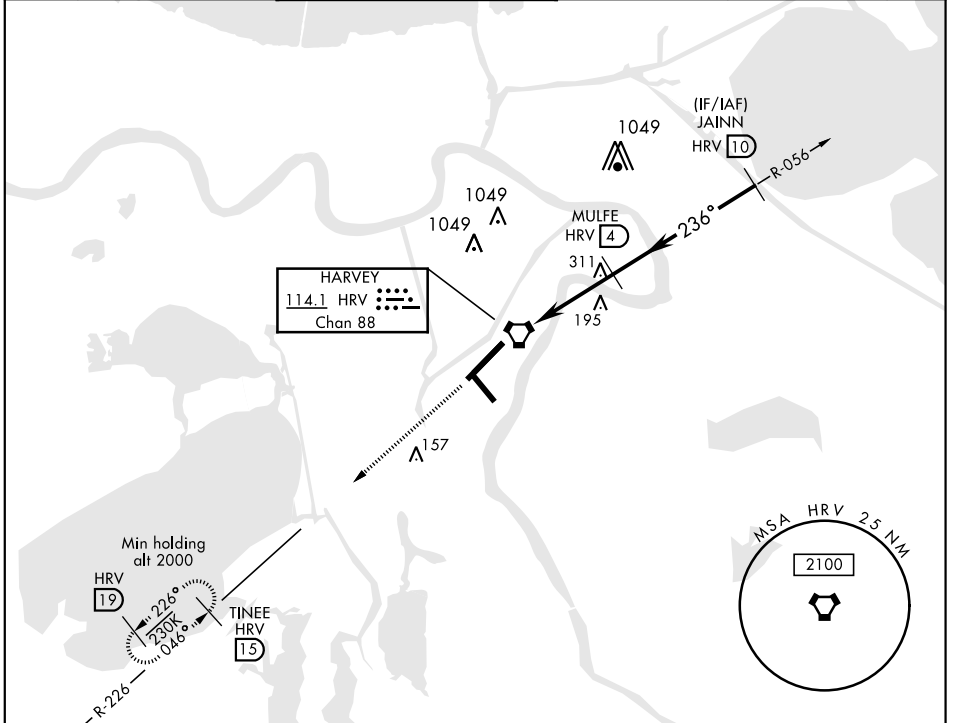
VORTAC HRV 114.1 Chan 88	APCH CRS 236°	Rwy Idg 10,001 TDZE Arprt Elev -1 2
--	-------------------------	---

AL-630 [USN]

NEW ORLEANS NAS JRB
(ALVIN CALLENDER FLD) (KNBG)

<p>▼ * When ALS inop, increase vis CAT AB to 1 mile, CAT CD to 1½ miles.</p>	ALSF-1 (A1)	MISSED APPROACH: Climb to 2000 via R-226 to TINEE and hold.

ATIS ★ 279.55	NEW ORLEANS APP CON 123.85 256.9	NAVY NEW ORLEANS TOWER ★ 0 123.8 340.2 (CTAF)	GND CON 121.6 270.35	CLNC DEL 128.35 263.0	ASR/PAR
-------------------------	--	---	--------------------------------	---------------------------------	---------

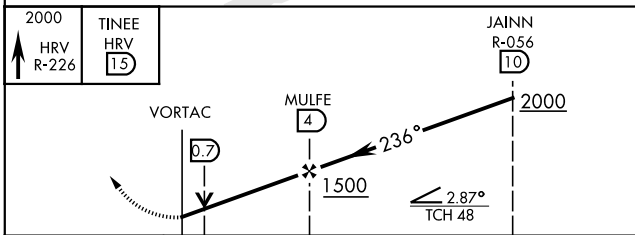


SC-4, 25 FEB 2021 to 25 MAR 2021

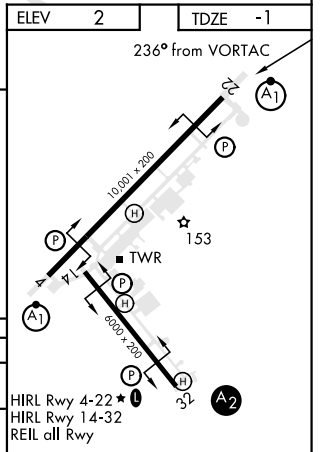
SC-4, 25 FEB 2021 to 25 MAR 2021

RADAR REQUIRED

EMERG SAFE ALT 100 NM 3100



CATEGORY	A	B	C	D
S-22 *	500-½	501 (500-½)	500-1	501 (500-1)
CIRCLING	580-1	578 (600-1)	580-1 ½ 578 (600-1 ½)	640-2 638 (700-2)



VOR/DME or TACAN RWY 22