

NEW ORLEANS, LOUISIANA

RNAV (GPS) RWY 4

AL-630 (USN)

NEW ORLEANS NAS JRB (ALVIN CALLENDER FLD) (KNBG)

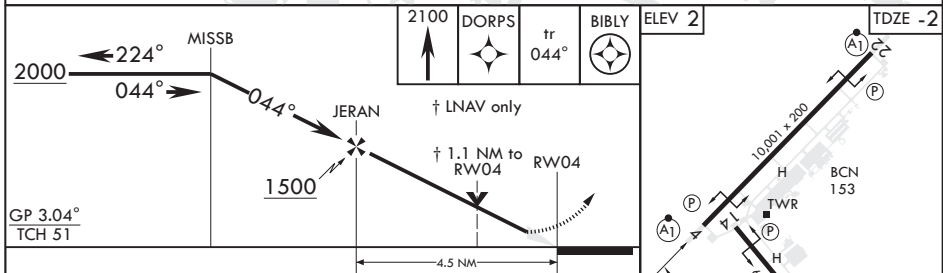
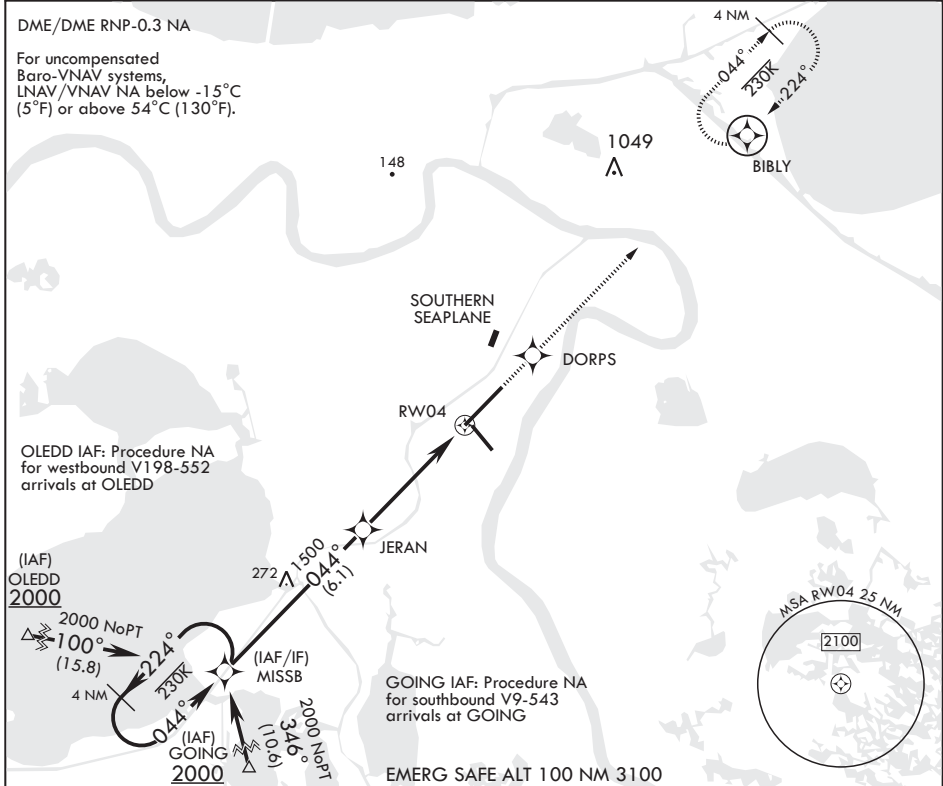
APCH CRS 044°	Rwy Idg TDZE Arprt Elev	10,001 -2 2
-------------------------	-------------------------------	--

▼ * When ALS inop, increase vis CAT ABCD to 1 5/8 mile.
 ** When ALS inop, increase CAT AB vis to 1 mile, CAT CD vis to 1 1/8 miles.



MISSED APPROACH: Climb to 2100 direct DORPS track 044° to BIBLY and hold.

ATIS* 279.55	APP CON/DEP CON 123.85 256.9	NAVY NEW ORLEANS TOWER* 123.8 0* 340.2 (CTAF)	GND CON 121.6 270.35	CLNC DEL 128.35 263.0	ASR/PAR
------------------------	--	---	--------------------------------	---------------------------------	---------



CATEGORY	A	B	C	D
LNNAV/VNAV DA*	480-1 1/8		482	(500-1 1/8)
LNNAV MDA**	400-1/2	402 (400-1/2)	400-3/4	402 (400-3/4)
C CIRCLING	580-1	578 (600-1)	580-1 1/2 578 (600-1 1/2)	640-2 638 (700-2)

NEW ORLEANS, LOUISIANA

29°50'N - 90°02'W NEW ORLEANS NAS JRB (ALVIN CALLENDER FLD) (KNBG)

Amdt 4 13SEP18

RNAV (GPS) RWY 4

SC-4, 25 FEB 2021 to 25 MAR 2021

SC-4, 25 FEB 2021 to 25 MAR 2021