

NEW ORLEANS, LOUISIANA

# RNAV (GPS) RWY 14

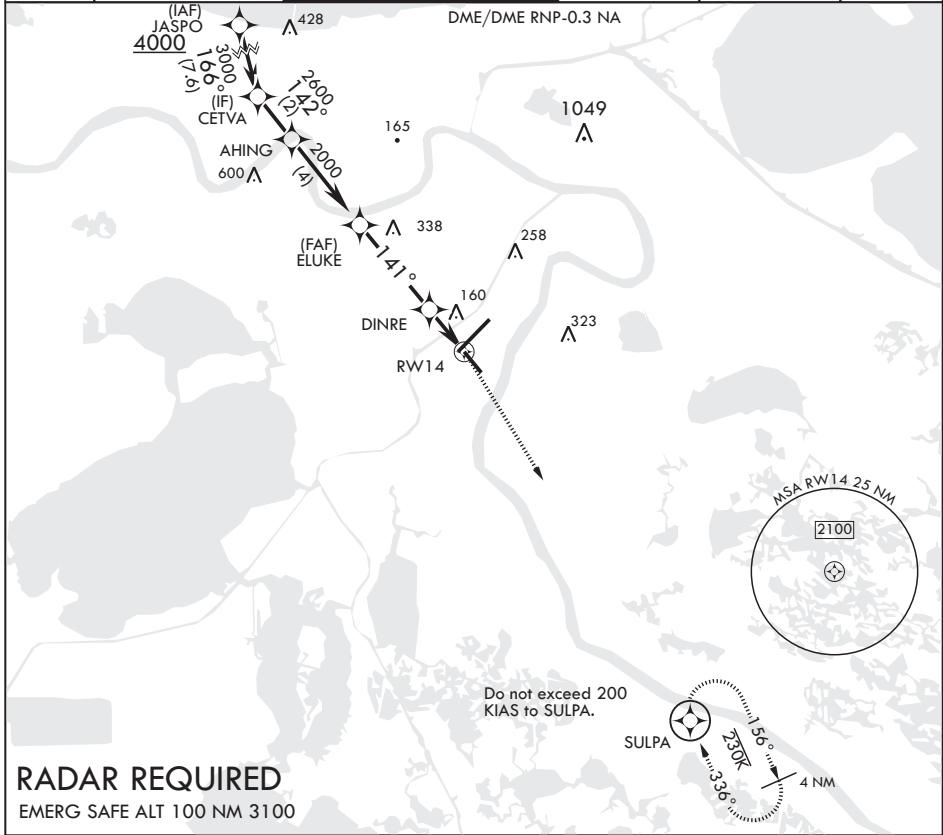
AL-630 (USN)

NEW ORLEANS NAS JRB (ALVIN CALLENDER FLD) (KNBG)

APCH CRS <b>141°</b>	Rwy Idg <b>6000</b>
	TDZE <b>2</b>
	Arprt Elev <b>2</b>

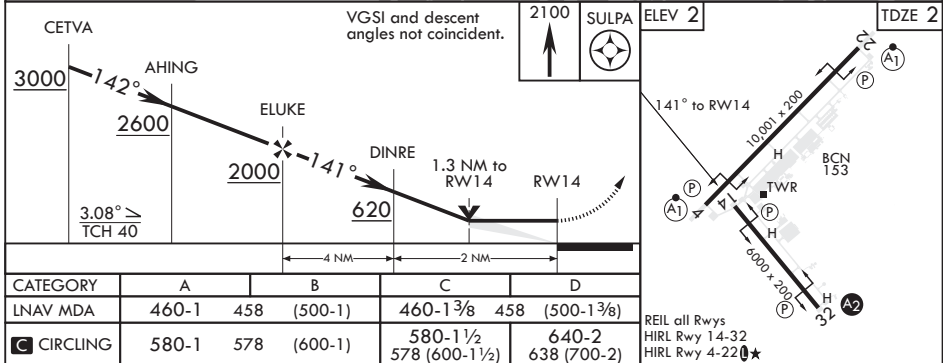
MISSED APPROACH: Climb to 2100 direct SULPA and hold.

ATIS* <b>279.55</b>	APP CON/DEP CON <b>123.85 256.9</b>	NAVY NEW ORLEANS TOWER* <b>123.8 0* 340.2 (CTAF)</b>	GND CON <b>121.6 270.35</b>	CLNC DEL <b>128.35 263.0</b>	ASR/PAR
------------------------	--	---	--------------------------------	---------------------------------	---------



## RADAR REQUIRED

EMERG SAFE ALT 100 NM 3100



CATEGORY	A	B	C	D
LNAV MDA	460-1	458 (500-1)	460-1 3/8	458 (500-1 3/8)
<b>C</b> CIRCLING	580-1	578 (600-1)	580-1 1/2 578 (600-1 1/2)	640-2 638 (700-2)

REIL all Rwys  
HIRL Rwy 14-32  
HIRL Rwy 4-22 0\*

NEW ORLEANS, LOUISIANA

29°50'N - 90°02'W NEW ORLEANS NAS JRB (ALVIN CALLENDER FLD) (KNBG)

Amdt 1 13SEP18

# RNAV (GPS) RWY 14

SC-4, 25 FEB 2021 to 25 MAR 2021

SC-4, 25 FEB 2021 to 25 MAR 2021