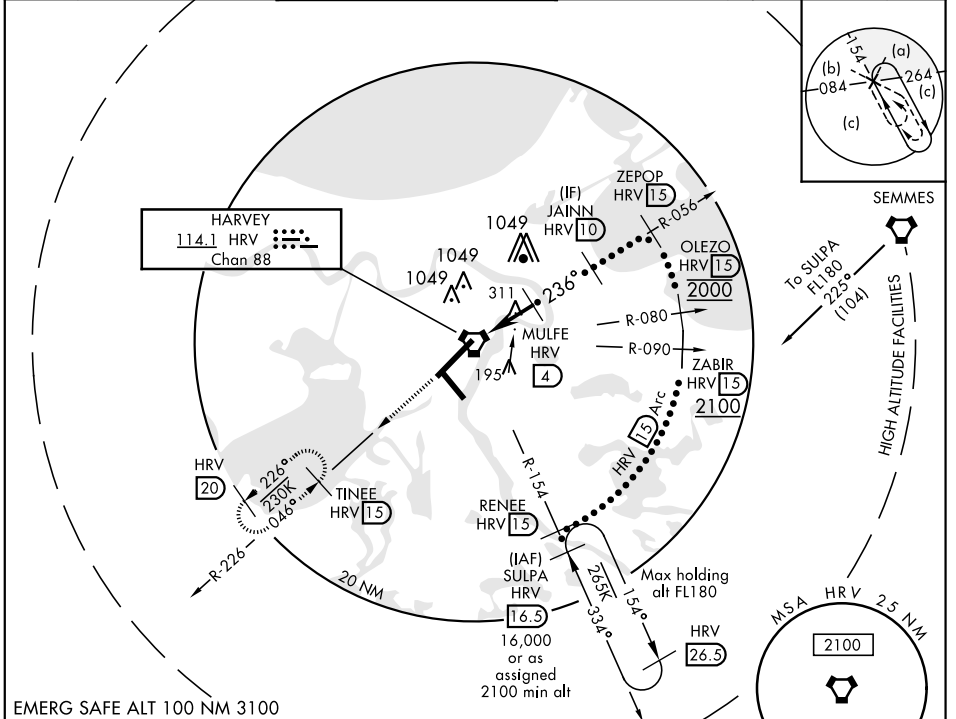


# HI-TACAN RWY 22

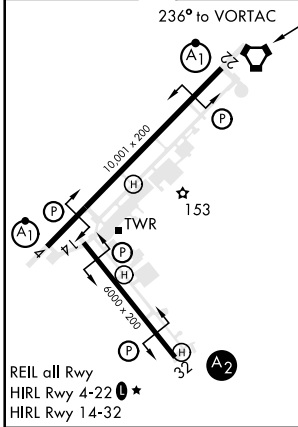
VORTAC HRV <b>114.1</b> Chan <b>88</b>	APCH CRS <b>236°</b>	Rwy ldg <b>10,001</b> TDZE <b>-1</b> Arprt Elev <b>2</b>	JAL-630 [USN] NEW ORLEANS NAS JRB (ALVIN CALLENDER FLD) (KNBG)
--	-------------------------	--	---

<p><b>▽</b> * When ALS inop, increase vis CAT CDE to 1½ miles. ** CAT E circling not authorized NW of Rwy 4-22.</p>	<p>ALSF-1 </p>	<p>MISSED APPROACH: Climb to 2000 via R-226 to TINEE and hold.</p>
---	--------------------	--

ATIS ★ <b>279.55</b>	NEW ORLEANS APP CON <b>123.85 256.9</b>	NAVY NEW ORLEANS TOWER ★ <b>123.8 340.2</b> (CTAF)	GND CON <b>121.6 270.35</b>	CLNC DEL <b>128.35 263.0</b>	ASR/ PAR
-------------------------	--	---	--------------------------------	---------------------------------	-------------



EMERG SAFE ALT 100 NM 3100



ELEV 2	TDZE -1	236° to VORTAC		
2000 HRV R-226	TINEE HRV R-226 15	ZEPOP HRV R-056 15		
VORTAC 0.7		MULFE 4	JAINN 10	2000
8		4 NM		2.87° TCH 45
CATEGORY	C	D	E	
S-22 *	500-1 501 (500-1)			
<b>C</b> CIRCLING **	580-1½ 578 (600-1½)	640-2 638 (700-2)	640-2¼ 638 (700-2¼)	

# HI-TACAN RWY 22

SC-4, 25 FEB 2021 to 25 MAR 2021

SC-4, 25 FEB 2021 to 25 MAR 2021

