

APP CRS	Rwy Idg	<b>6108</b>
<b>181°</b>	TDZE	<b>5024</b>
	Apt Elev	<b>5024</b>

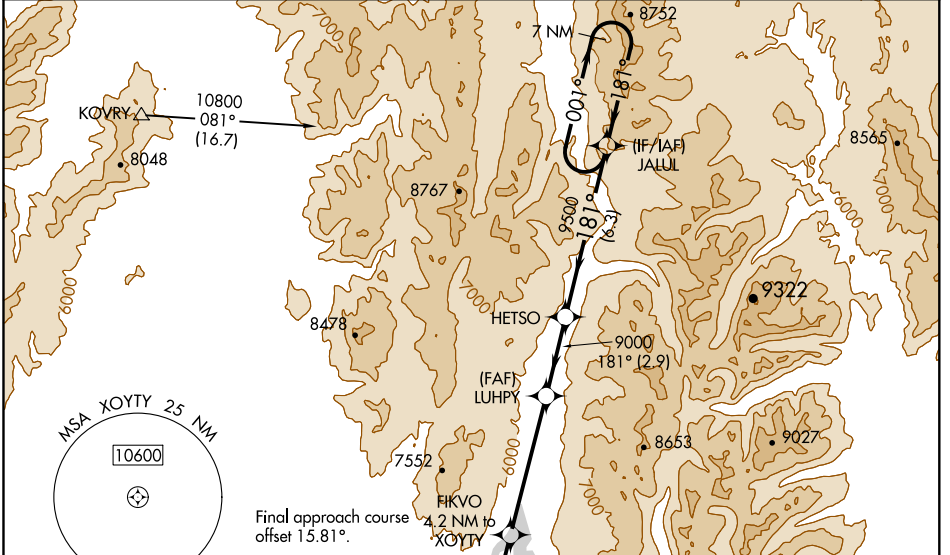
# RNAV (GPS) RWY 16

MC CALL MUNI (MYL)

**▼** Rwy 16 helicopter visibility reduction below 1 SM NA.  
**▲** DME/DME RNP-0.3 NA.  
**☁** -20°C Straight-in Rwy 16 NA at night, Circling Rwy 16 NA at night.

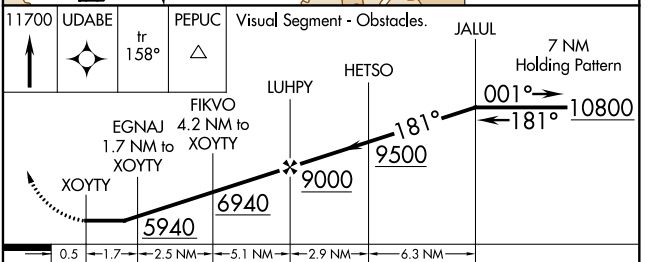
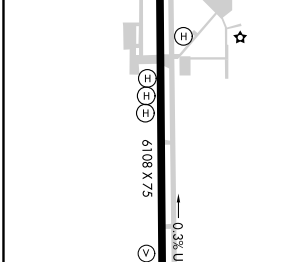
MISSED APPROACH: Climb to 11700 direct UDABE and on track 158° to PEPUC and hold, continue climb-in-hold to 11700.

ASOS <b>119.925</b>	SALT LAKE CENTER <b>128.05 306.95</b>	UNICOM <b>122.8 (CTAF)</b>
------------------------	--	-------------------------------



Procedure NA for arrival on DNJ VOR/DME airway radials 325 CW 083.

ELEV 5024	TDZE 5024
-----------	-----------



CATEGORY	A	B	C	D
LNAV MDA	5520-1	496 (500-1)	5520-1 $\frac{3}{8}$ 496 (500-1 $\frac{3}{8}$ )	NA
<b>C</b> CIRCLING	5940-1 $\frac{1}{4}$	916 (1000-1 $\frac{1}{4}$ )	6140-3 1116 (1200-3)	NA

NW-1, 25 FEB 2021 to 25 MAR 2021

NW-1, 25 FEB 2021 to 25 MAR 2021