

WAAS CH 97423 W06A	APP CRS 064°	Rwy Idg TDZE Apt Elev	5501 823 823
--	------------------------	-----------------------------	---

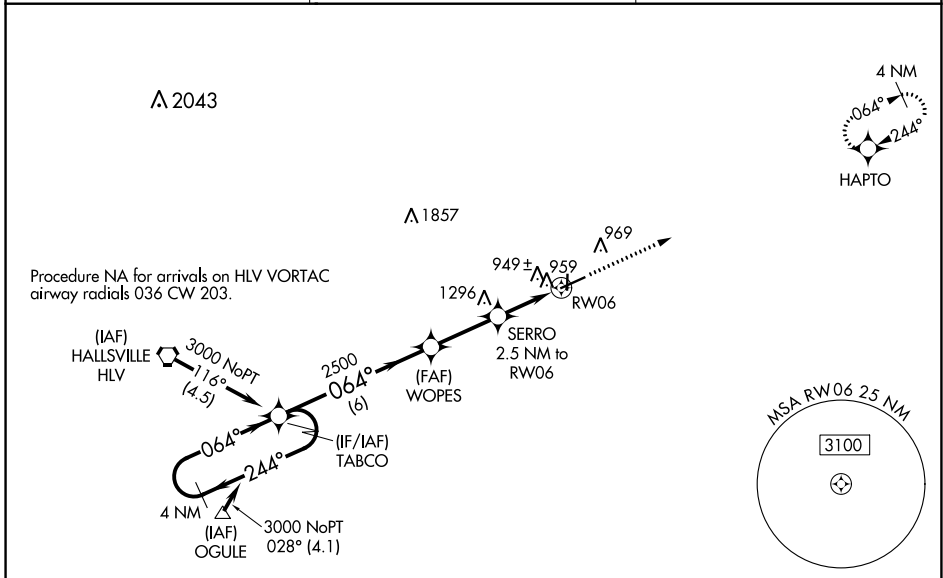
RNAV (GPS) RWY 6

MEXICO MEMORIAL (MYJ)

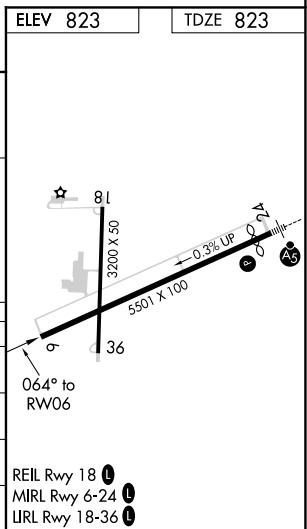
NA For uncompensated Baro-VNAV systems, LNAV/VNAV NA below -16°C (4°F) or above 54°C (130°F). When local altimeter setting not received, use Columbia Rgnl altimeter setting and increase all DA 121 feet, all MDA 140 feet, increase LPV all Cats visibility to 1½, LNAV/VNAV all Cats and LNAV Cat C visibility to 1¾. DME/DME RNP-0.3 NA. Helicopter visibility reduction below ¾ SM NA. VDP and Baro-VNAV NA when using Columbia Rgnl altimeter setting.

MISSED APPROACH: Climb to 3000 direct HAPTO and hold.

AWOS-3PT 120.575	MIZZU APP CON 124.375	CTAF 122.9
----------------------------	---------------------------------	----------------------



4 NM Holding Pattern		TABCO	WOPES	SERRO 2.5 NM to RW06	3000 HAPTO
3000 ← 244°		→ 064°	2500	*1.1 NM to RW06	*LNAV only
GP 3.00° TCH 40		→ 064°	*1640	RW06	
		← 6 NM	← 2.6 NM	← 1.4 NM	← 1.1 NM
CATEGORY		A	B	C	D
LPV DA		1073-7/8	250 (300-7/8)		NA
LNAV/VNAV DA		1099-7/8	276 (300-7/8)		NA
LNAV MDA		1200-1	377 (400-1)		NA
CIRCLING		1280-1	457 (500-1)	1280-1½ 457 (500-1½)	NA



NC-3, 25 FEB 2021 to 25 MAR 2021

NC-3, 25 FEB 2021 to 25 MAR 2021