

(PADRZ2.PADRZ) 17341

**PADRZ TWO DEPARTURE (RNAV)**

AL-5401 (FAA)

MONTGOMERY-GIBBS EXECUTIVE (MYF)  
SAN DIEGO, CALIFORNIA

ATIS  
126.9  
MONTGOMERY TOWER \*  
119.2 269.4  
SOCAL DEP CON  
119.6 363.1

**TOP ALTITUDE:  
15000**

**DEPARTURE ROUTE DESCRIPTION**

TAKEOFF RUNWAYS 10L/10R: Climbing right turn heading 270° to 2000, expect vectors to cross GYWNN at or above 8000, then on track 308° to PADRZ, thence. . . .

TAKEOFF RUNWAY 23: Climbing right turn heading 270° to 2000, expect vectors to cross GYWNN at or above 8000, then on track 308° to PADRZ, thence. . . .

TAKEOFF RUNWAYS 28L/28R: Climbing left turn heading 270° to 2000, expect vectors to cross GYWNN at or above 8000, then on track 308° to PADRZ, thence. . . .

. . . .on (transition). Maintain 15000. Expect higher altitude 10 minutes after departure.

CHKNN TRANSITION (PADRZ2.CHKNN)

DINTY TRANSITION (PADRZ2.DINTY)

IKAYE TRANSITION (PADRZ2.IKAYE)

MALIT TRANSITION (PADRZ2.MALIT)

OROSZ TRANSITION (PADRZ2.OROSZ)

SHAFTER TRANSITION (PADRZ2.EHF)

NOTE: RNAV 1.

NOTE: RADAR required.

NOTE: Turbojets and turboprops only.

NOTE: CHKNN, SHAFTER, IKAYE, OROSZ TRANSITIONS: DME/DME/IRU or GPS required.

NOTE: DINTY, MALIT TRANSITIONS: GPS only.

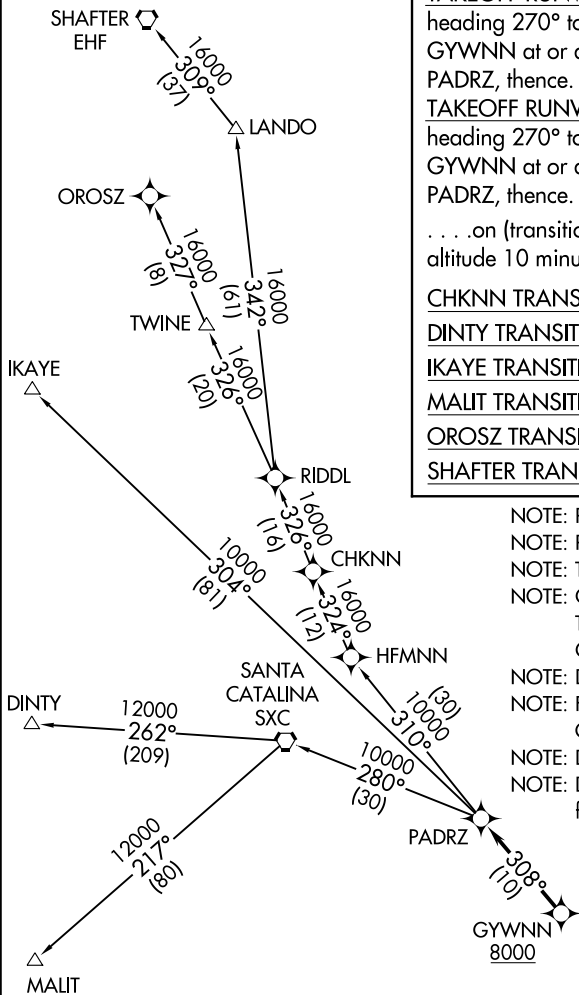
NOTE: For non-GPS equipped aircraft, Oceanside (OCN) must be operational.

NOTE: DINTY TRANSITION ATC assigned only.

NOTE: DINTY and MALIT TRANSITIONS NA from SEE, SDM and RNM airports.

SW-3, 25 FEB 2021 to 25 MAR 2021

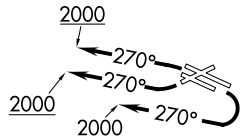
SW-3, 25 FEB 2021 to 25 MAR 2021



TAKEOFF MINIMUMS

Rwy 5: NA-ATC.  
Rwys 10L/10R, 23, 28L/R: Standard.

NOTE: Chart not to scale.



**PADRZ TWO DEPARTURE (RNAV)**

(PADRZ2.PADRZ) 07DEC17

SAN DIEGO, CALIFORNIA  
MONTGOMERY-GIBBS EXECUTIVE (MYF)