

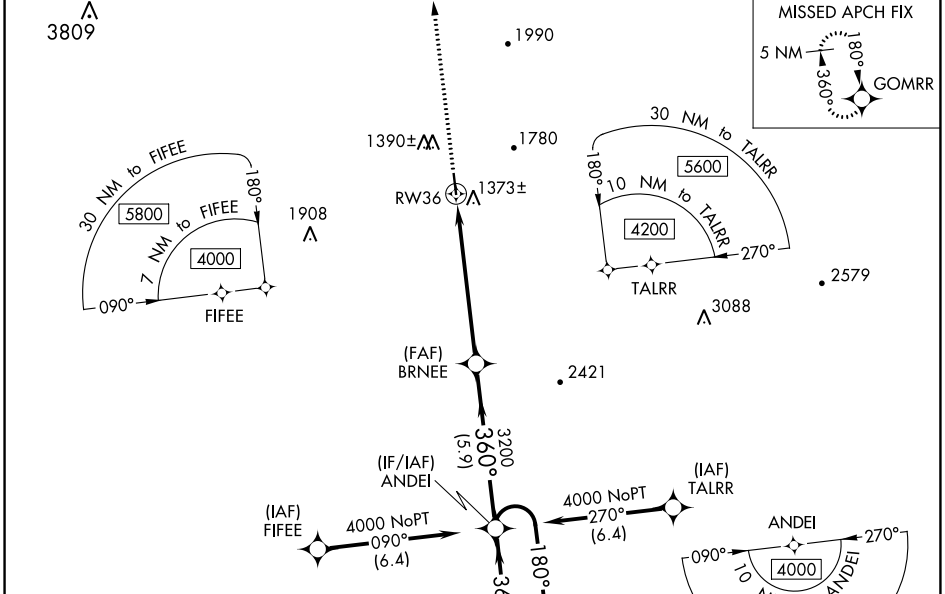
WAAS CH <b>99717</b> <b>W36A</b>	APP CRS <b>360°</b>	Rwy Idg TDZE <b>1228</b> Apt Elev <b>1269</b>
--	------------------------	---

**RNAV (GPS) RWY 36**  
MOUNT AIRY/SURRY COUNTY (MWK)

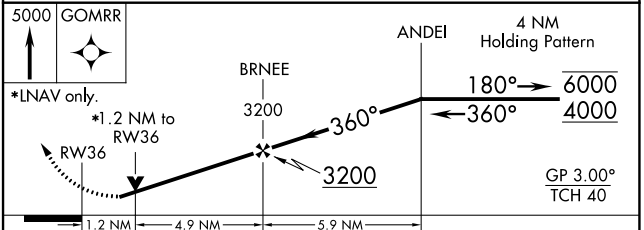
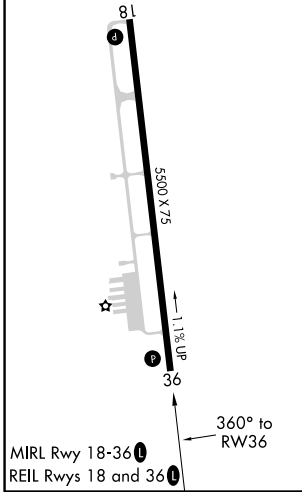
RNP APCH.  
 ▼ Rwy 36 helicopter visibility reduction below 3/4 SM NA.  
 ▲ For uncompensated Baro-VNAV systems, LNAV/VNAV NA below -17°C or above 54°C.

MISSED APPROACH: Climb to 5000 direct GOMRR and hold.

AWOS-3 <b>121.125</b>	GREENSBORO APP CON <b>124.35 269.225</b>	UNICOM <b>123.0 (CTAF) 0</b>
--------------------------	---	---------------------------------



ELEV 1269	TDZE 1228
-----------	-----------



CATEGORY	A	B	C	D
LPV DA	1527-1 299 (300-1)			
LNAV/VNAV DA	1637-1 1/8 409 (400-1 1/8)			
LNAV MDA	1640-1	412 (400-1)	1640-1 1/8	412 (400-1 1/8)
<input checked="" type="checkbox"/> CIRCLING	1940-1 671 (700-1)	2040-1 771 (800-1)	2180-2 3/4 911 (1000-2 3/4)	2340-3 1071 (1100-3)

SE-2, 25 FEB 2021 to 25 MAR 2021

SE-2, 25 FEB 2021 to 25 MAR 2021