

WAAS CH 77799 W32A	APP CRS 324°	Rwy Idg 13492 TDZE 1167 Apt Elev 1189
--	------------------------	--

RNAV (GPS) Y RWY 32R

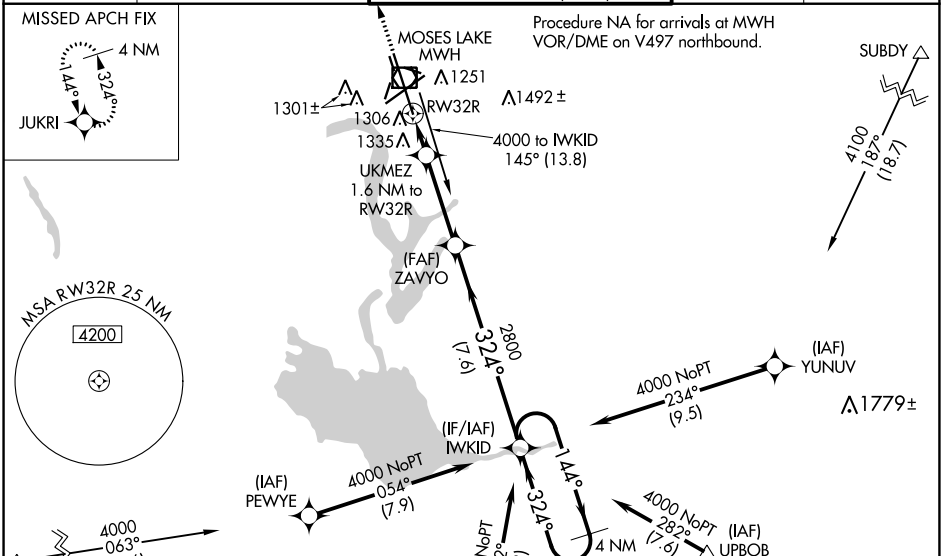
GRANT COUNTY INTL (MWH)

▼ For uncompensated Baro-VNAV systems, LNAV/VNAV NA below -17°C (2°F) or above 36°C (96°F). DME/DME RNP-0.3 NA. Baro-VNAV NA when using Ephrata altimeter setting.
 ▲ When local altimeter setting not received, use Ephrata altimeter setting and increase all DA 36 feet and all MDA 40 feet and increase LNAV/VNAV all Cats visibility to RVR 3500 and LNAV Cats C and D visibility to RVR 5000. For inoperative MALSR increase LNAV/VNAV all Cats visibility to RVR 5500 and LNAV Cats C and D visibility to 1½ miles. For inoperative MALSR, when using Ephrata altimeter setting, increase LNAV/VNAV all Cats visibility to 1¼ miles.
 #RVR 1800 authorized with use of FD or AP or HUD to DA, NA when using Ephrata altimeter setting.

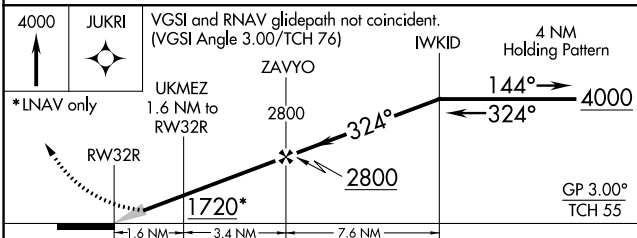
MALSR

MISSED APPROACH:
Climb to 4000 direct JUKRI and hold.

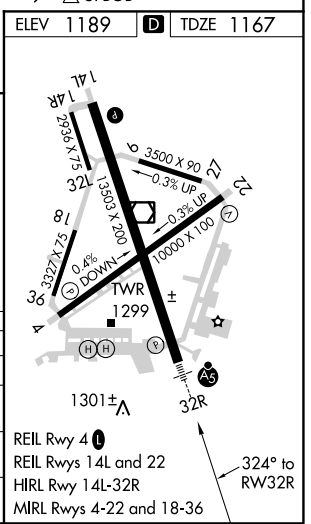
ATIS 119.05	GRANT COUNTY APP CON * 126.4 379.95	GRANT COUNTY TOWER * 118.25 (CTAF) 257.8 (EAST) 128.0 257.8 (WEST)	GND CON 121.9	UNICOM 122.95
------------------------------	--	---	--------------------------------	--------------------------------



ELEV 1189	D	TDZE 1167
------------------	----------	------------------



CATEGORY	A	B	C	D
LPV DA#		1367/24	200 (200-½)	
LNAV/VNAV DA		1517/30	350 (400-¾)	
LNAV MDA	1620/24	453 (500-½)	1620/45	453 (500-¾)
CIRCLING	1660-1	471 (500-1)	1660-1½	1740-2 551 (600-2)



NW-1, 25 FEB 2021 to 25 MAR 2021

NW-1, 25 FEB 2021 to 25 MAR 2021