

WAAS CH 70410 W22A	APP CRS 216°	Rwy Idg 10000 TDZE 1166 Apt Elev 1189
--	------------------------	--

RNAV (GPS) Y RWY 22

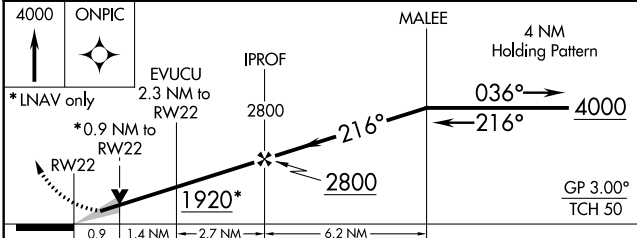
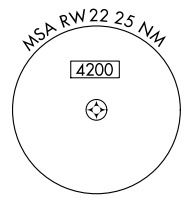
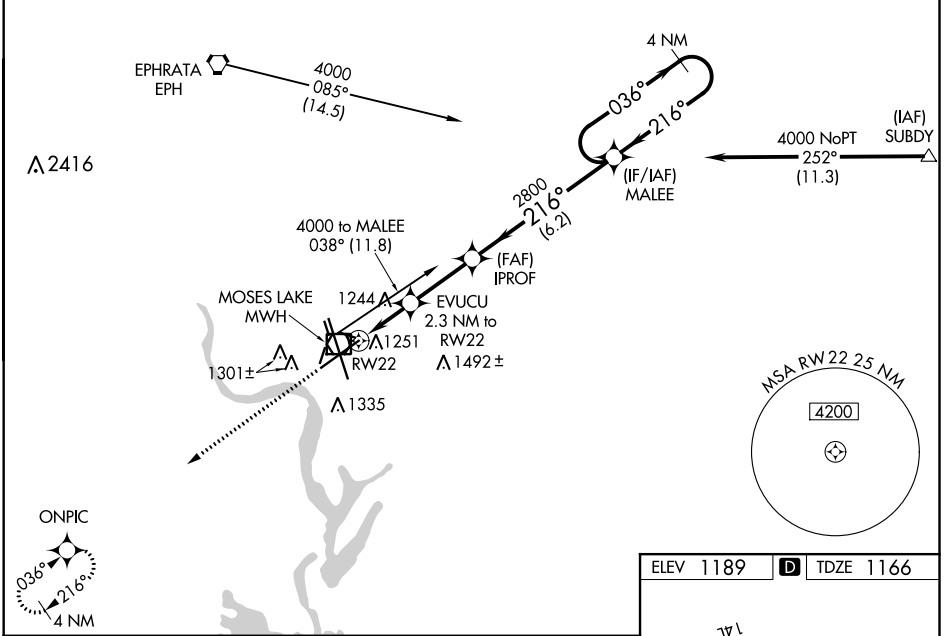
GRANT COUNTY INTL (MWH)

⚠ For uncompensated Baro-VNAV systems, LNAV/VNAV NA below -17°C (2°F) or above 36°C (96°F). DME/DME RNP-0.3 NA. Baro-VNAV and VDP NA when using Ephrata altimeter setting. When local altimeter setting not received, use Ephrata altimeter setting and increase all DA 36 feet and all MDA 40 feet, increase LNAV/VNAV all Cats visibility and LNAV Cats C and D visibility 1/8 mile.

⚠ MISSED APPROACH: Climb to 4000 direct ONPIC and hold.

ATIS 119.05	GRANT COUNTY APP CON * 126.4 379.95	GRANT COUNTY TOWER * 118.25 (CTAF) 257.8 (EAST) 128.0 257.8 (WEST)	GND CON 121.9	UNICOM 122.95
-----------------------	---	--	-------------------------	-------------------------

Procedure NA for arrivals at EPH VORTAC on airway radials 060 CW 135.



ELEV 1189	D TDZE 1166
-----------	--------------------

REIL Rwy 4
REIL Rws 14L and 22
HIRL Rwy 14L-32R
MRL Rws 4-22 and 18-36

CATEGORY	A	B	C	D
LPV DA		1366-3/4	200 (200-3/4)	
LNAV/VNAV DA		1429-7/8	263 (300-7/8)	
LNAV MDA		1500-1	334 (400-1)	
CIRCLING	1660-1	471 (500-1)	1660-1 1/2 471 (500-1 1/2)	1740-2 551 (600-2)

NW-1, 25 FEB 2021 to 25 MAR 2021

NW-1, 25 FEB 2021 to 25 MAR 2021