

LOC I-MWH 109.5	APP CRS 324°	Rwy Idg 13492
		TDZE 1167
		Apt Elev 1189

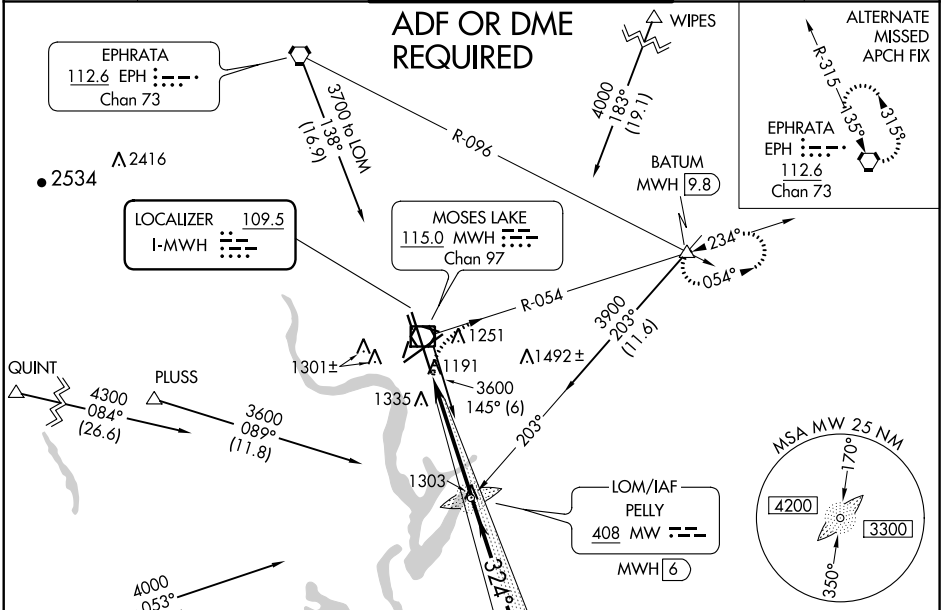
ILS or LOC RWY 32R

GRANT COUNTY INTL (MWH)

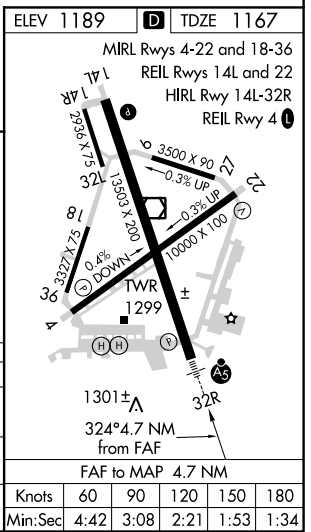
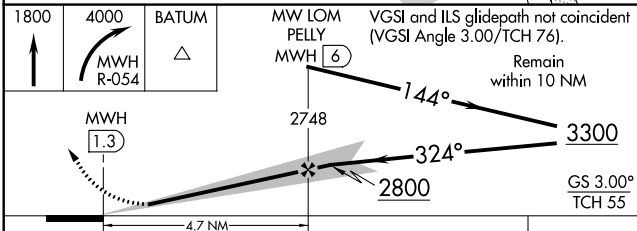
⚠ When local altimeter setting not received, use Ephrata altimeter setting and increase all DA/MDA 40 feet. For inoperative MALS/R, increase S-LOC 32R Cat D visibility to RVR 5000.
***RVR 1800** authorized with use of FD or AP or HUD to DA, NA when using Ephrata altimeter setting.

MALS/R MISSED APPROACH: Climb to 1800, then climbing right turn to 4000 on MWH R-054 to BATUM INT/MWH 9.8 DME and hold, continue climb-in-hold to 4000.

ATIS 119.05	GRANT COUNTY APP CON * 126.4 379.95	GRANT COUNTY TOWER * 118.25 (CTAF) 0 257.8 (EAST) 128.0 257.8 (WEST)	GND CON 121.9	UNICOM 122.95
-----------------------	-----------------------------------------------	------------------------------------------------------------------------------------------	-------------------------	-------------------------



1800	4000	BATUM	MW LOM Pelly	VGSI and ILS glidepath not coincident (VGSI Angle 3.00/TCH 76). Remain within 10 NM
			MWH [6]	
	MWH R-054			



CATEGORY	A	B	C	D
S-ILS 32R*	1367/24		200 (200-½)	
S-LOC 32R	1440/24		273 (300-½)	
			1440/40	
			273 (300-¾)	
CIRCLING	1680-1 491 (500-1)		1680-1½ 491 (500-1½)	
			1740-2 551 (600-2)	

Knots	60	90	120	150	180
Min:Sec	4:42	3:08	2:21	1:53	1:34

NW-1, 25 FEB 2021 to 25 MAR 2021

NW-1, 25 FEB 2021 to 25 MAR 2021