

WAAS CH 63020 W15A	APP CRS 148°	Rwy Idg TDZE Apt Elev	4103 745 745
--	------------------------	-----------------------------	---

RNAV (GPS) RWY 15L

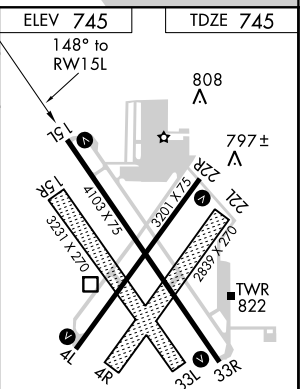
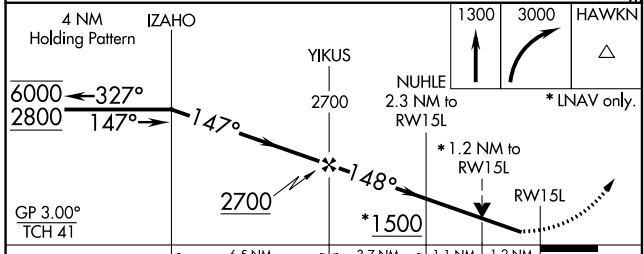
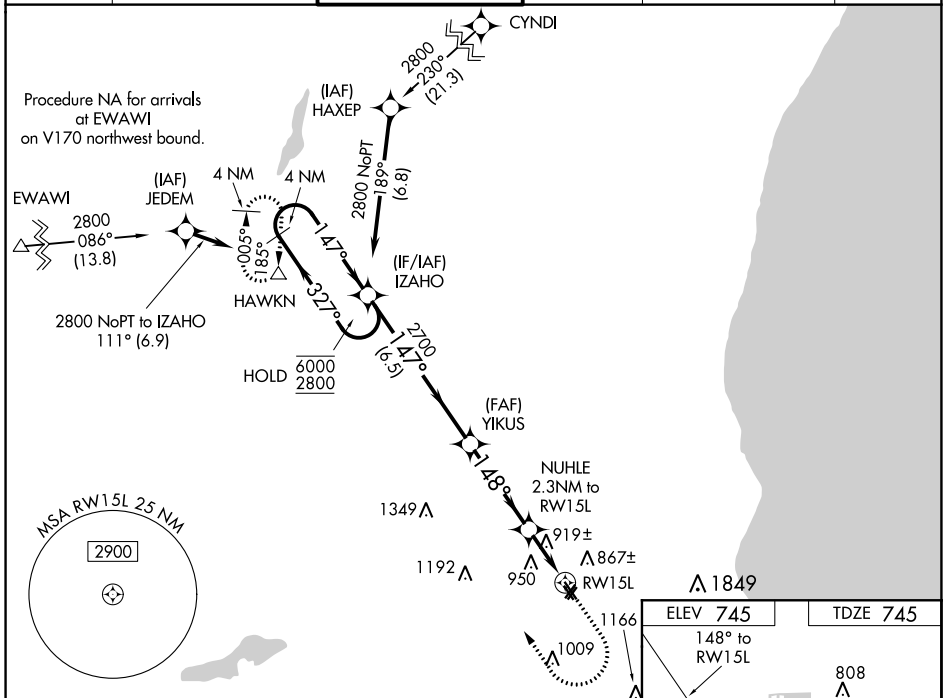
LAWRENCE J TIMMERMAN (MWC)

RNP APCH.

▼ Circling NA to Rwy 4R, 15R, 22L and 33L. Rwy 15L helicopter visibility reduction below 3/4 SM NA. For uncompensated Baro-VNAV systems, LNAV/VNAV NA below -16°C or above 54°C. VDP and Baro-VNAV NA when using General Mitchell Intl altimeter setting. When local altimeter setting not received, use General Mitchell Intl altimeter setting and increase LPV DA to 1024 feet and LNAV/VNAV to DA 1251 feet; increase all MDAs 40 feet and LNAV visibility Cats C and D 1/2 SM, and Circling visibility Cat C 1/4 SM.

MISSED APPROACH:
Climb to 1300 then climbing right turn to 3000 direct HAWKN and hold.

ATIS 128.3	MILWAUKEE APP CON 125.35 307.0	TIMMERMAN TOWER * 120.5 (CTAF) 0	GND CON 121.7	CLNC DEL 121.7 (When twr closed)	UNICOM 122.95
----------------------	--	--	-------------------------	--	-------------------------



CATEGORY	A	B	C	D
LPV DA	995-1 250 (300-1)			
LNAV/VNAV DA	1222-1 477 (500-1)			
LNAV MDA	1180-1	435 (500-1)	1180-1 1/4	435 (500-1 1/4)
CIRCLING	1220-1 475 (500-1)	1340-1 595 (600-1)	1340-1 1/2 595 (600-1 1/2)	1340-2 595 (600-2)

REIL Rwy 4L, 22R, 15L, and 33R
MIRL Rwy 4L-22R and 15L-33R

EC-3, 25 FEB 2021 to 25 MAR 2021

EC-3, 25 FEB 2021 to 25 MAR 2021