

WAAS CH <b>57904</b> <b>W20A</b>	APP CRS <b>202°</b>	Rwy Idg TDZE Apt Elev	<b>8012</b> <b>468</b> <b>472</b>
--	------------------------	-----------------------------	---

# RNAV (GPS) RWY 20

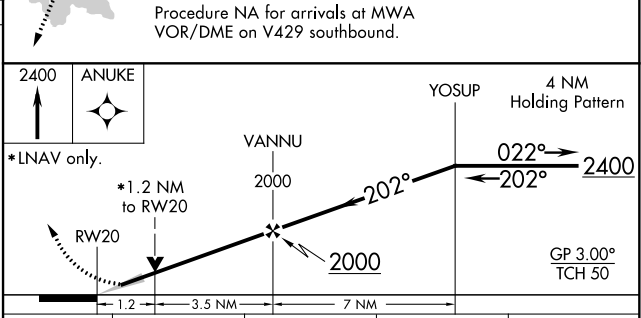
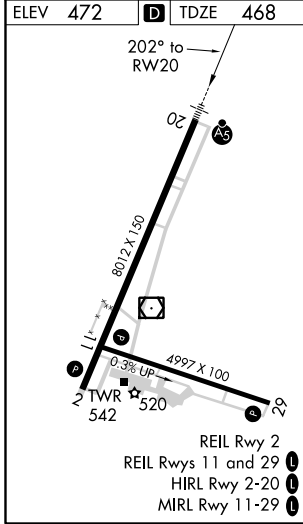
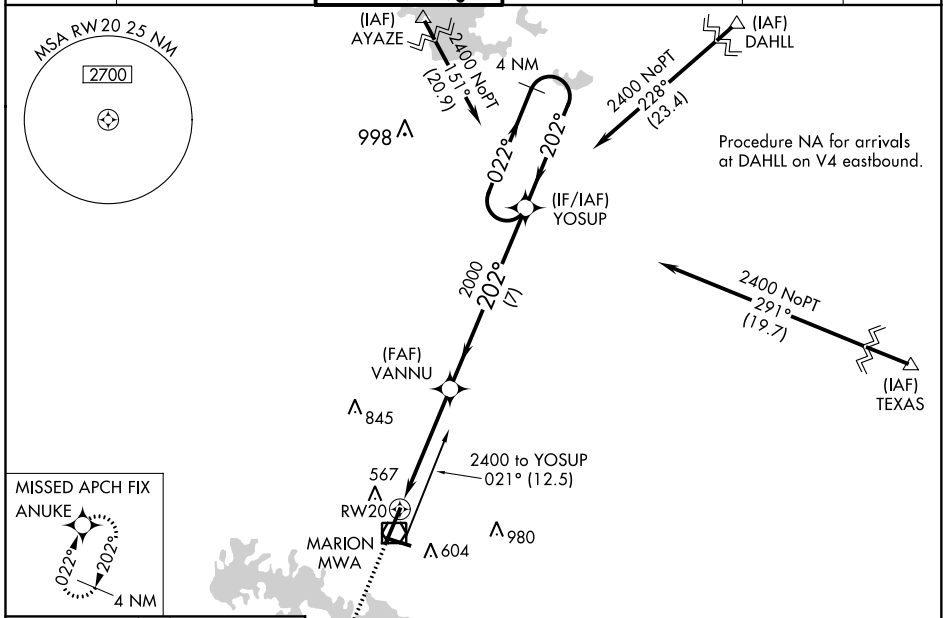
VETERANS AIRPORT OF SOUTHERN ILLINOIS (MWA)

**⚠** For uncompensated Baro-VNAV systems, LNAV/VNAV NA below -15° C (5°F) or above 54°C (130°F). DME/DME RNP-0.3 NA. Circling Rwy 11 NA at night. When local altimeter setting not received, use Carbondale/Murphysboro altimeter setting and increase all DA/MDA 40 feet, and increase LNAV/VNAV all Cats and LNAV Cat C and D visibility 1/8 mile. Baro-VNAV and VDP NA when using Carbondale/Murphysboro altimeter setting.



**MISSED APPROACH:**  
Climb to 2400 direct ANUKE and hold.

AWOS-3 <b>119.675</b>	KANSAS CITY CENTER <b>127.475 346.275</b>	MARION TOWER ★ <b>128.4 (CTAF) 0</b>	CLNC DEL <b>127.475</b> (When twr closed)	GND CON <b>121.7</b>	UNICOM <b>122.95</b>
--------------------------	--	---	--	-------------------------	-------------------------



CATEGORY	A	B	C	D
LPV DA		668-1/2	200 (200-1/2)	
LNAV/VNAV DA		773-1/2	305 (400-1/2)	
LNAV MDA	880-1/2	412 (500-1/2)	880-3/4	412 (500-3/4)
CIRCLING	920-1 448 (500-1)	940-1 468 (500-1)	940-1 1/2 468 (500-1 1/2)	1040-2 568 (600-2)

EC-3, 25 FEB 2021 to 25 MAR 2021

EC-3, 25 FEB 2021 to 25 MAR 2021