

WAAS CH <b>86430</b> <b>W32A</b>	APP CRS <b>321°</b>	Rwy Idg TDZE <b>1028</b> Apt Elev <b>1035</b>	<b>3999</b>
--	------------------------	---	-------------

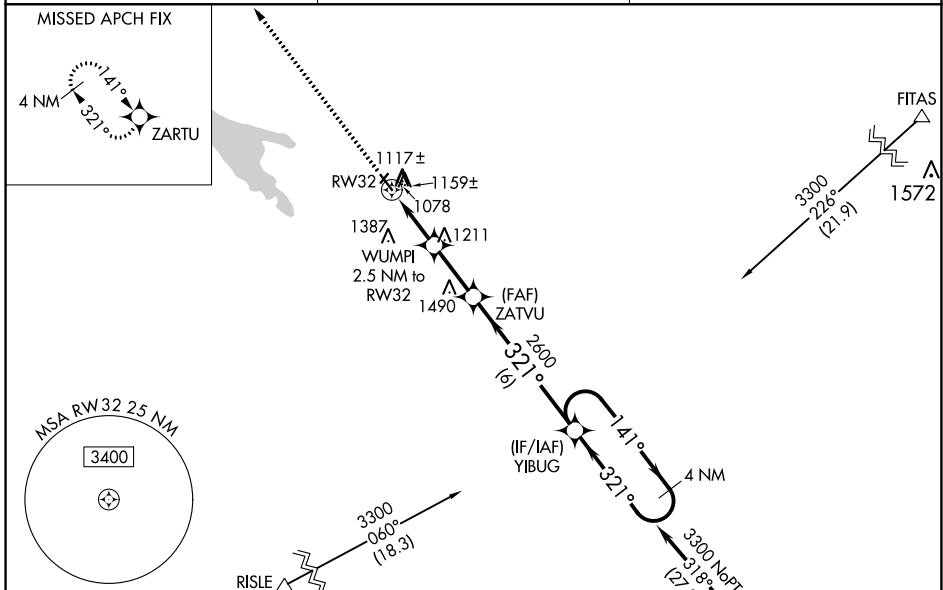
# RNAV (GPS) RWY 32

MONTEVIDEO-CHIPPEWA COUNTY (MVE)

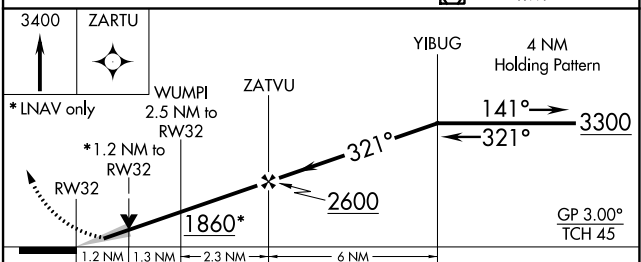
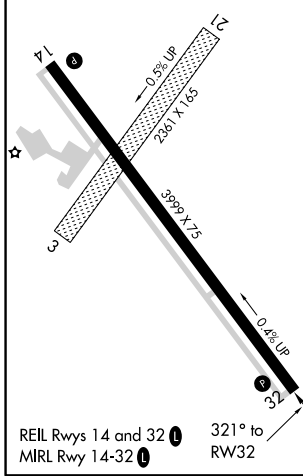
**⚠** Circling to Rwy 14 NA at night. Baro-VNAV NA when using Granite Falls altimeter setting. For uncompensated Baro-VNAV systems, LNAV/VNAV NA below -30°C (-22°F) or above 54°C (130°F). When local altimeter setting not received, use Granite Falls altimeter setting and increase all DA 36 feet and MDA 40 feet and increase LNAV/VNAV visibility all Cats 1/8 mile, increase LNAV visibility Cats C and D 1/8 mile, and increase Circling visibility Cat D 1/4 mile. DME/DME RNP -0.3 NA. Circling to Rwy 3-21 NA. Helicopter visibility reduction below 1 SM NA.

**MISSED APPROACH:**  
Climb to 3400 direct ZARTU and hold.

AWOS-3 <b>111.6</b>	MINNEAPOLIS CENTER <b>125.5 323.1</b>	UNICOM <b>122.8 (CTAF) 0</b>
------------------------	--	---------------------------------



ELEV 1035	TDZE 1028
-----------	-----------



CATEGORY	A	B	C	D
LPV DA	1234-1 206 (200-1)			
LNAV/VNAV DA	1428-1 3/8 400 (400-1 3/8)			
LNAV MDA	1420-1	392 (400-1)	1420-1 1/8	392 (400-1 1/8)
CIRCLING	1560-1	525 (600-1)	1560-1 1/2	1700-2 665 (700-2)

NC-1, 25 FEB 2021 to 25 MAR 2021

NC-1, 25 FEB 2021 to 25 MAR 2021