

# HI-TACAN Y RWY 12

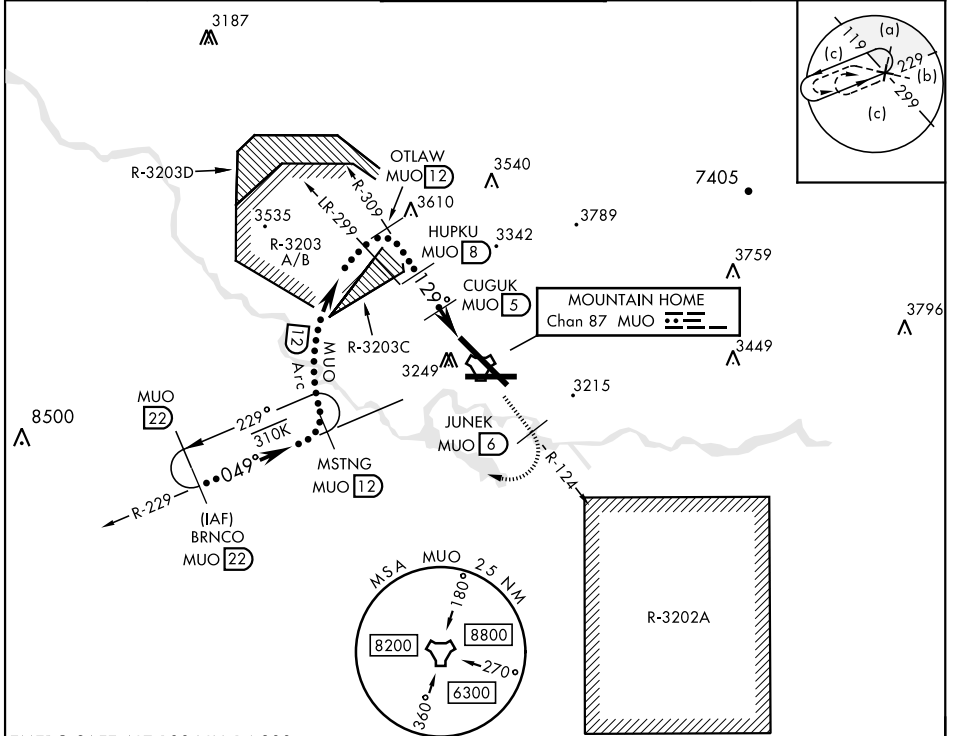
TACAN MUO Chan <b>87</b>	APCH CRS <b>129°</b>	Rwy Idg <b>13,510</b> TDZE <b>2987</b> Arprt Elev <b>2996</b>	JAL-323 [USAF]	MOUNTAIN HOME AFB (KMUO)
--------------------------	----------------------	---	----------------	--------------------------

▼ \* When ALS inop, increase CAT CDE vis to 1 3/8 miles.  
 \*\* Circling NA NE of Rwy 12-30.
 

 ALSF-1  

 MISSED APPROACH: Climb to 10,000 via MUO R-124 to JUNEK/6 DME, turn right and intercept MUO R-229 to MSTNG/12 DME and hold. Continue climb in hold to 10,000.

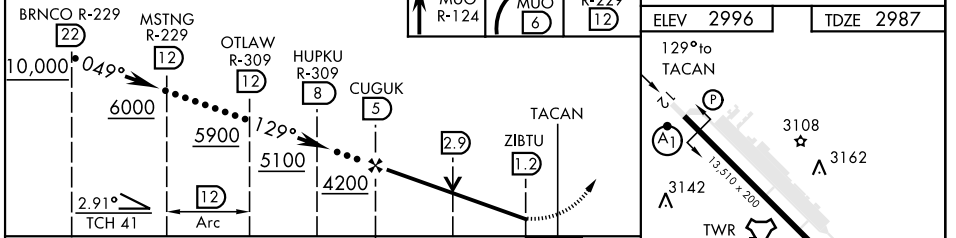
ATIS <b>273.5</b>	MOUNTAIN HOME APP CON <b>124.8 259.1</b>	MOUNTAIN HOME TOWER <b>133.85 253.5</b>	GND CON <b>120.5 275.8</b>	CLNC DEL <b>127.1 290.425</b>
-------------------	--	---	----------------------------	-------------------------------



EMERG SAFE ALT 100 NM 14,200

VGSI and descent angles not coincident (VGSI Angle 2.50/TCH 41).

10,000 MUO R-124	JUNEK MUO 6	MSTNG MUO R-229 12
------------------	-------------	--------------------



CATEGORY	C	D	E
S-12 *	3480/50	493 (500-1)	
CIRCLING **	3560-1 1/2 564 (600-1 1/2)	3560-2 564 (600-2)	3700-2 1/2 704 (800-2 1/2)

# HI-TACAN Y RWY 12

NW-1, 25 FEB 2021 to 25 MAR 2021

NW-1, 25 FEB 2021 to 25 MAR 2021