

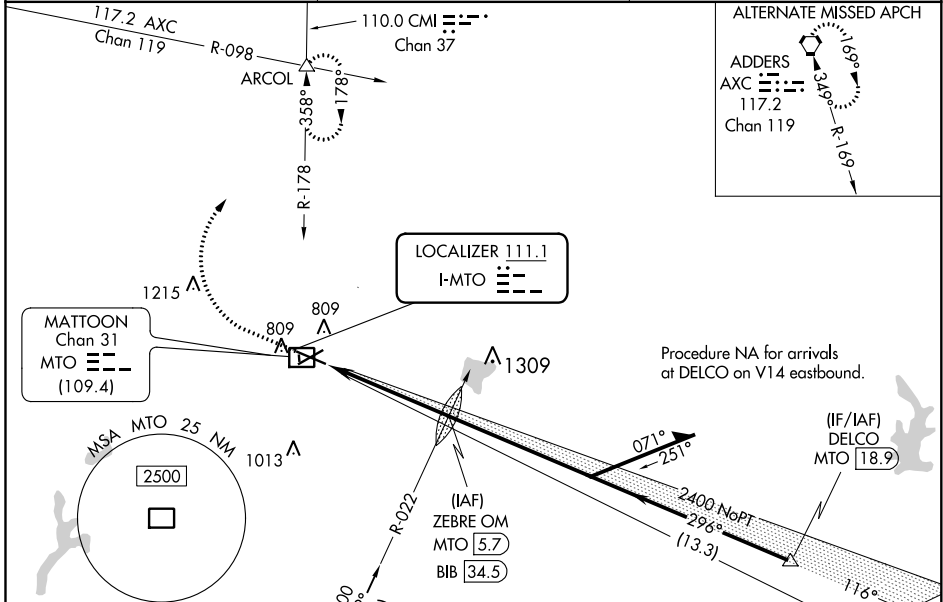
LOC I-MTO 111.1	APP CRS 296°	Rwy Idg TDZE Apt Elev	6501 718 722
---------------------------	------------------------	-----------------------------	---

ILS or LOC RWY 29

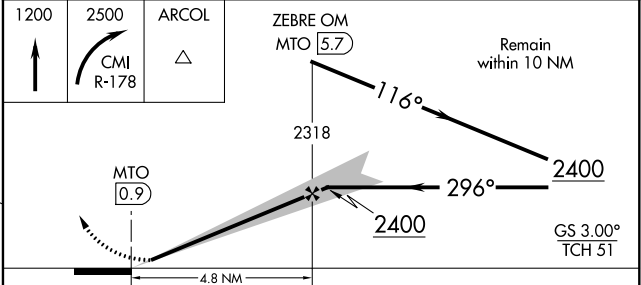
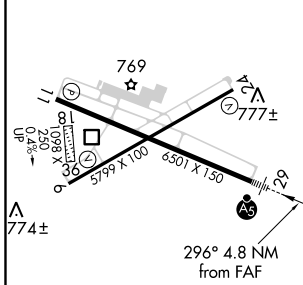
COLES COUNTY MEMORIAL (MTO)

DME required for procedure entry from BIB VORTAC.		MALSR 	MISSED APPROACH: Climb to 1200 then climbing right turn to 2500 on CMI R-178 to ARCOL INT and hold.
DME from MTO DME. Simultaneous reception of I-MTO and MTO DME required. Circling NA to Rwy 18 and 36.			

ASOS 118.475	CHAMPAIGN APP CON* 132.85 290.225	UNICOM 122.7 (CTAF)
------------------------	---	-------------------------------



ELEV 722	D	TDZE 718
----------	----------	----------



	A	B	C	D
S-ILS 29		918-½	200 (200-½)	
S-LOC 29	1160-½	442 (500-½)	1160-¾	442 (500-¾)
C CIRCLING	1160-1 438 (500-1)	1180-1 458 (500-1)	1240-1½ 518 (600-1½)	1380-2 658 (700-2)

MATTOON/CHARLESTON, ILLINOIS
Amdt 8 10OCT19

39°29'N-88°17'W

ILS or LOC RWY 29

EC-3, 25 FEB 2021 to 25 MAR 2021

EC-3, 25 FEB 2021 to 25 MAR 2021