

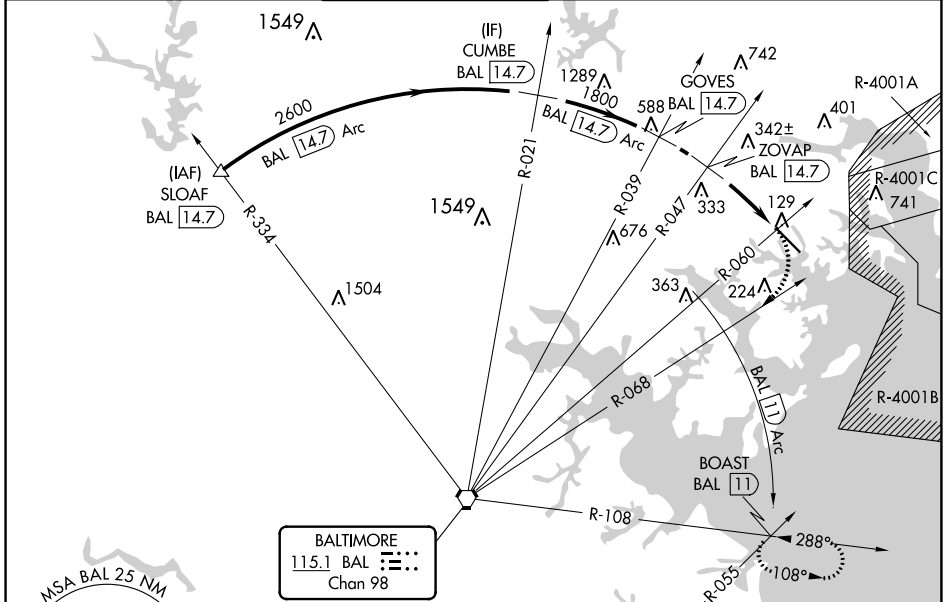
VORTAC BAL 115.1 Chan 98	BAL 14.7 Arc	Rwy ldg 6997 TDZE 22 Apt Elev 22
--	--------------------	---

VOR or TACAN RWY 15

MARTIN STATE (MTN)

DME required.		MISSED APPROACH: Climbing right turn to 2500 on BAL VORTAC R-068 and BAL 11 DME Arc clockwise to BOAST INT/BAL 11 DME and hold.	
<p>▼ Rwy 15 helicopter visibility reduction below 3/4 SM NA. When local altimeter setting not received, use Baltimore/Washington Intl Thurgood Marshall altimeter setting and increase all MDA 60 feet, and increase S-15 Cat B visibility 1/4 SM, Cat C/D 1/2 SM and Circling Cats B/C 1/4 SM.</p>			

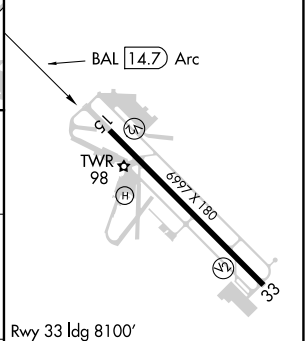
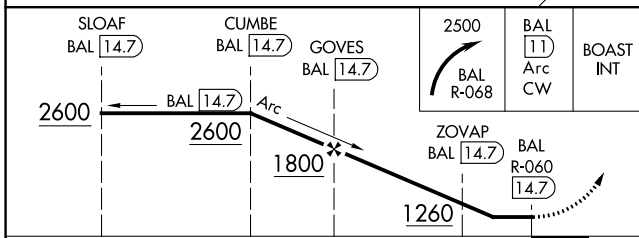
ATIS 124.925	POTOMAC APP CON 119.0 282.275	MARTIN TOWER * 121.3 (CTAF) 0 254.425	GND CON 121.8 253.4	CINC DEL 121.8 (when twr closed)	UNICOM 122.95
------------------------	---	--	-------------------------------	---	-------------------------



NE-3, 25 FEB 2021 to 25 MAR 2021

NE-3, 25 FEB 2021 to 25 MAR 2021

ELEV 22	TDZE 22
----------------	----------------



CATEGORY	A	B	C	D
S-15	920-1 1/4	898 (900-1 1/4)	920-2 1/2	898 (900-2 1/2)
CIRCLING	920-1 1/4	898 (900-1 1/4)	920-2 3/4	920-3

HIRL Rwy 15-33 **1**
REL Rwy 15 and 33 **1**