

LOC/DME I-MTN <b>110.7</b> Chan <b>44</b>	APP CRS <b>326°</b>	Rwy Idg TDZE <b>14</b> Apt Elev <b>21</b>	<b>6997</b>
---	------------------------	---	-------------

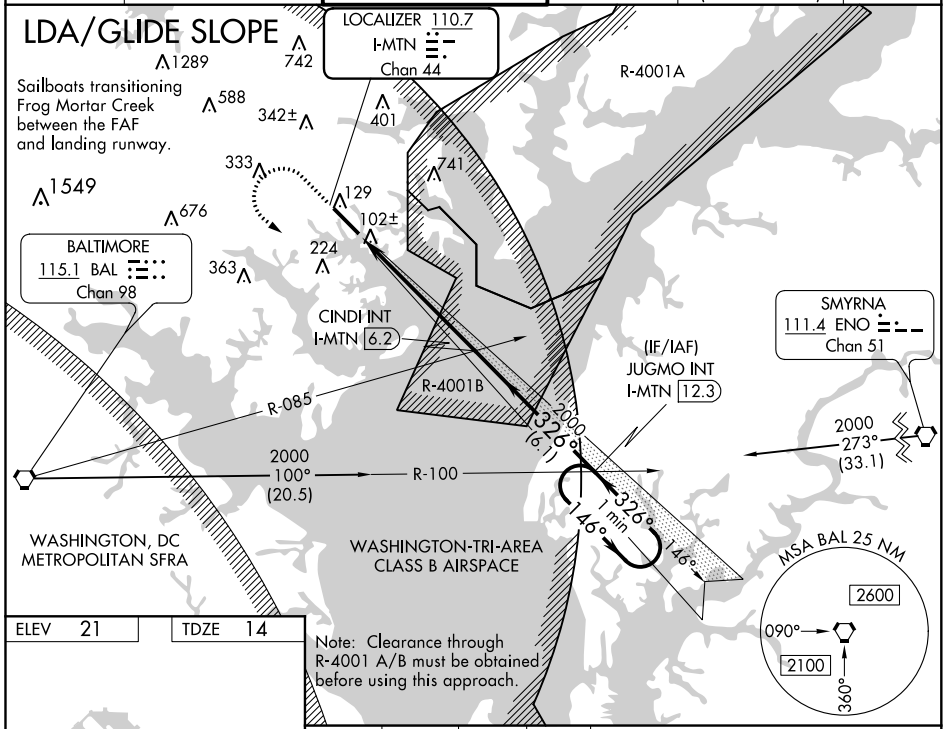
# LDA RWY 33

MARTIN STATE (MTN)

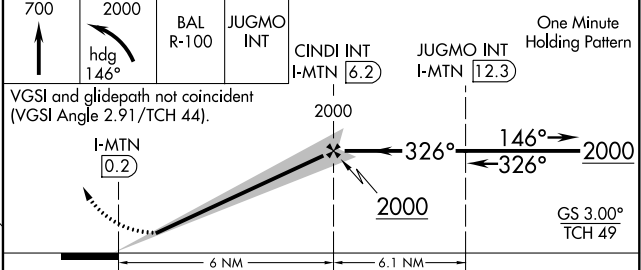
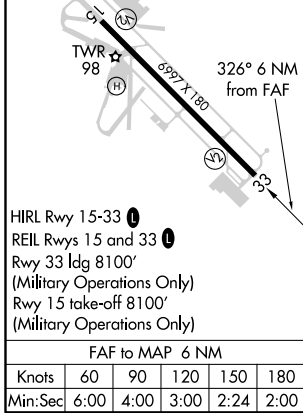
**▼** RADAR Required. Helicopter visibility reduction below 1 SM NA.  
**▲** When local altimeter setting not received, use Baltimore/Washington Intl Thurgood Marshall altimeter setting and raise all MDA 60 feet and raise S-LDA 33 Cat C and Circling Cat D visibility ¼ mile.

MISSED APPROACH: Climb to 700 then climbing left turn to 2000 on heading 146° and BAL VORTAC R-100 to JUGMO INT/12.3 DME and hold.

ATIS <b>124.925</b>	POTOMAC APP CON <b>119.0 282.275</b>	MARTIN TOWER ★ <b>121.3</b> (CTAF) <b>0 254.425</b>	GND CON <b>121.8 253.4</b>	CLNC DEL <b>121.8</b> (when twr closed)	UNICOM <b>122.95</b>
------------------------	---	--	-------------------------------	---	-------------------------



ELEV <b>21</b>	TDZE <b>14</b>
----------------	----------------



CATEGORY	A	B	C	D
S-LDA/GS 33	264-1 250 (300-1)			
S-LDA 33	380-1 366 (400-1)			380-1¼ 366 (400-1¼)
CIRCLING	540-1 519 (600-1)		540-1½ 519 (600-1½)	
				680-2 659 (700-2)

NE-3, 25 FEB 2021 to 25 MAR 2021

NE-3, 25 FEB 2021 to 25 MAR 2021