

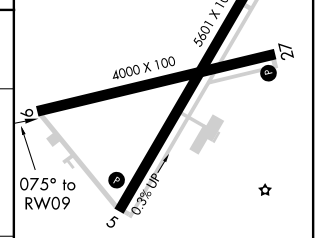
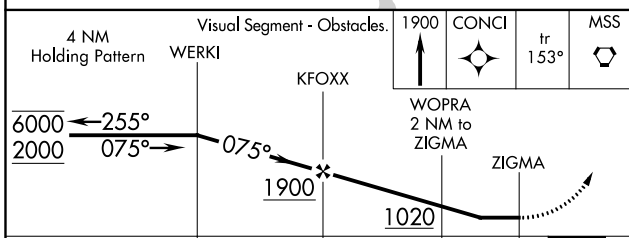
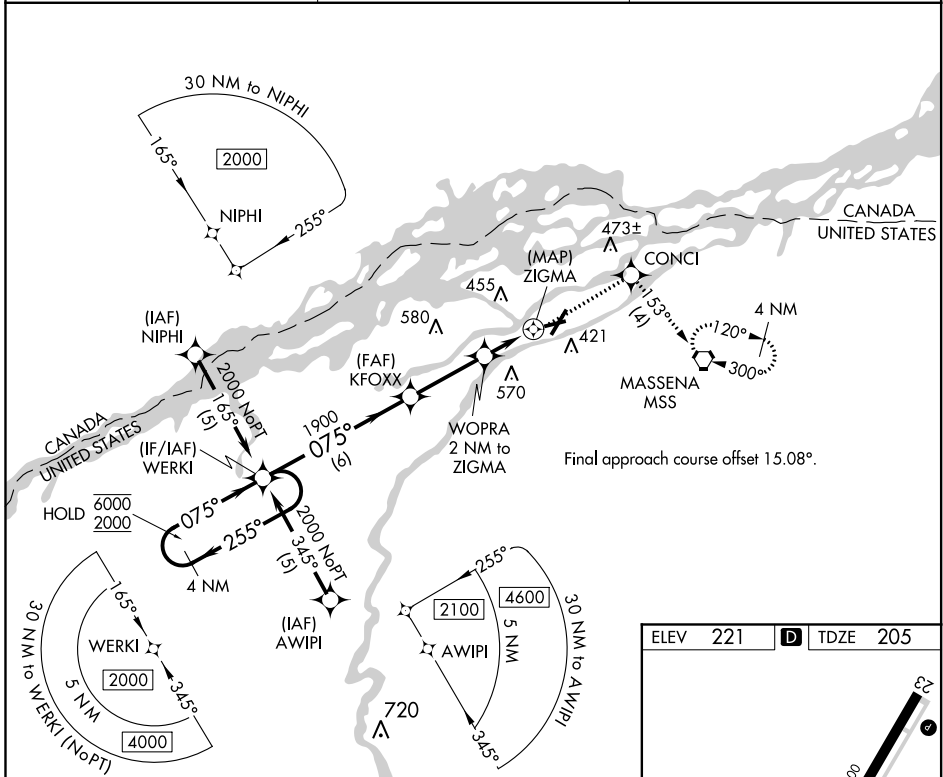
APP CRS	Rwy Idg	<b>3880</b>
<b>075°</b>	TDZE	<b>205</b>
	Apt Elev	<b>221</b>

# RNAV (GPS) RWY 9

MASSENA INTL-RICHARDS FIELD (MSS)

RNP APCH.	MISSED APPROACH: Climb to 1900 direct CONCI and on track 153° to MSS VORTAC and hold.
<b>⚠</b> Rwy 9 helicopter visibility reduction below 1 SM NA. <b>⚠</b> Straight-in Rwy 9 NA at night, Circling Rwy 9, 23, 27 NA at night.	

ASOS <b>128.075</b>	BOSTON CENTER <b>135.25 377.1</b>	UNICOM <b>123.0 (CTAF) 0</b>
------------------------	--------------------------------------	---------------------------------



CATEGORY	A	B	C	D
LNVA MDA	680-1 475 (500-1)		680-1½ 475 (500-1½)	680-1½ 475 (500-1½)
CIRCLING	740-1 519 (600-1)		800-1½ 579 (600-1½)	900-2¼ 679 (700-2¼)

REIL Rwy 5, 9 and 27 **0**  
HIRL Rwy 5-23 **0**  
MIRL Rwy 9-27 **0**

NE-2, 25 FEB 2021 to 25 MAR 2021

NE-2, 25 FEB 2021 to 25 MAR 2021