

RNAV (GPS) RWY 27

MASSENA INTL-RICHARDS FIELD (MSS)

APP CRS	Rwy Idg	3880
270°	TDZE	205
	Apt Elev	221

RNP APCH.

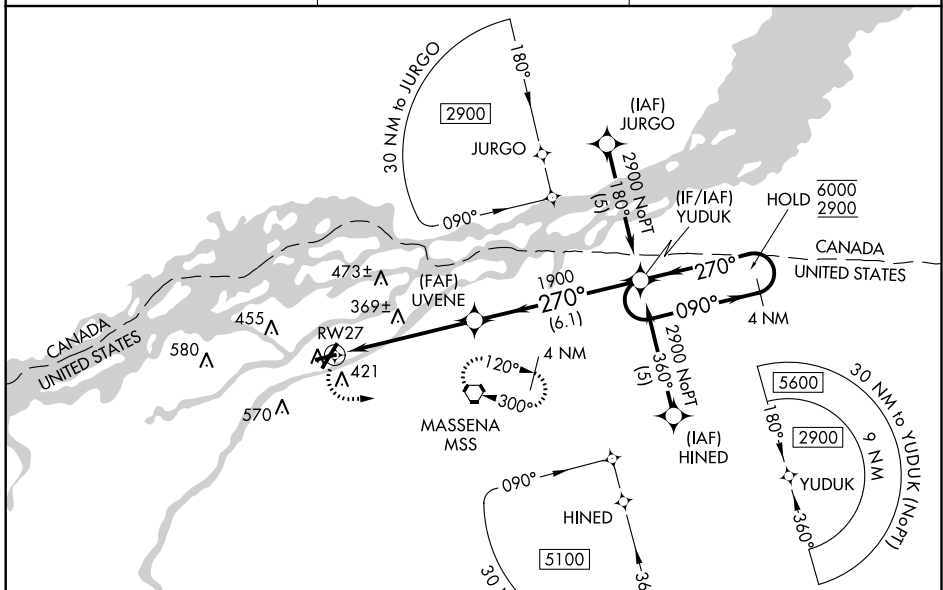
▽
▲ Rwy 27 helicopter visibility reduction below 1 SM NA.
Straight-in Rwy 27 NA at night, Circling Rwy 9, 23, 27 NA at night.

MISSED APPROACH:
Climbing left turn to 1900
direct MSS VORTAC and hold.

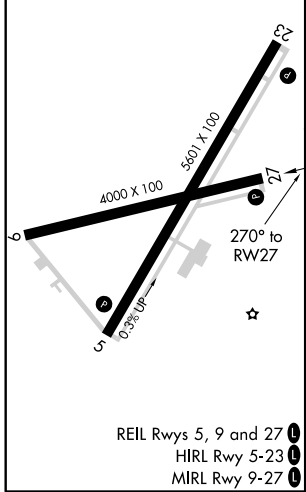
ASOS
128.075

BOSTON CENTER
135.25 377.1

UNICOM
123.0 (CTAF) 0



ELEV	221	D	TDZE	205
------	-----	----------	------	-----



CATEGORY	A	B	C	D
LNAV MDA	680-1	475 (500-1)	680-1 ³ / ₈ 475 (500-1 ³ / ₈)	680-1 ¹ / ₂ 475 (500-1 ¹ / ₂)
CIRCLING	740-1	519 (600-1)	800-1 ¹ / ₂ 579 (600-1 ¹ / ₂)	900-2 ¹ / ₄ 679 (700-2 ¹ / ₄)

NE-2, 25 FEB 2021 to 25 MAR 2021

NE-2, 25 FEB 2021 to 25 MAR 2021