

VOR/DME MSO 112.8 Chan 75	APP CRS 339°	Rwy Idg TDZE Apt Elev N/A N/A 3206
---	------------------------	--

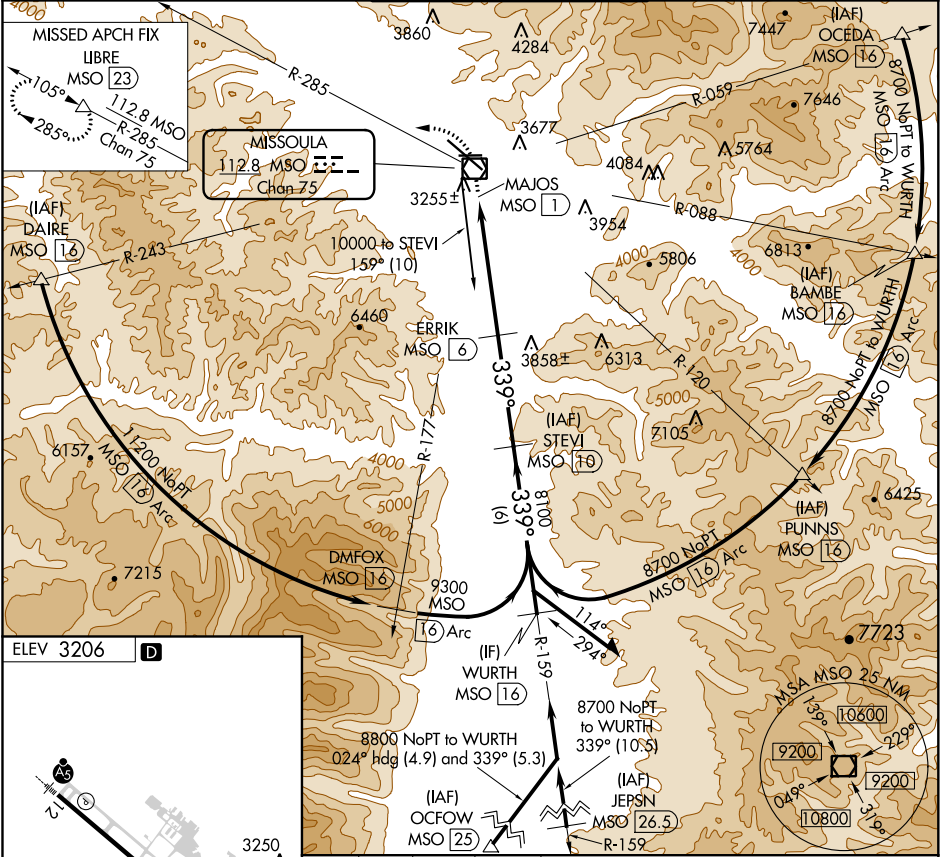
VOR-B

MISSOULA INTL (MSO)

RADAR required for procedure entry at JEPSN. DME required.

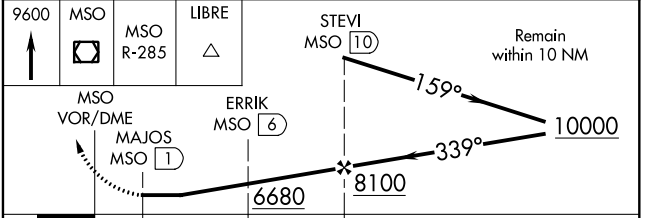
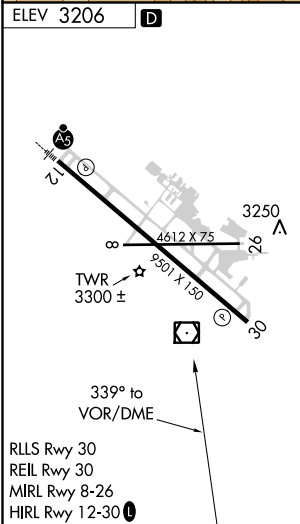
MISSED APPROACH: Climb to 9600 direct MSO VOR/DME and on MSO VOR/DME R-285 to LIBRE/MSO 23 DME and hold, continue climb-in-hold to 9600.

ATIS 126.65	SPOKANE APP CON * 124.9 298.95	MISSOULA TOWER * 118.4 (CTAF) 377.175	GND CON 121.9	UNICOM 122.95
-----------------------	--	---	-------------------------	-------------------------



NW-1, 25 FEB 2021 to 25 MAR 2021

NW-1, 25 FEB 2021 to 25 MAR 2021



CATEGORY	A	B	C	D
CIRCLING	4920-1¼ 1714 (1800-1¼)	4920-1½ 1714 (1800-1½)	4920-3 1714 (1800-3)	5160-3 1954 (2000-3)