

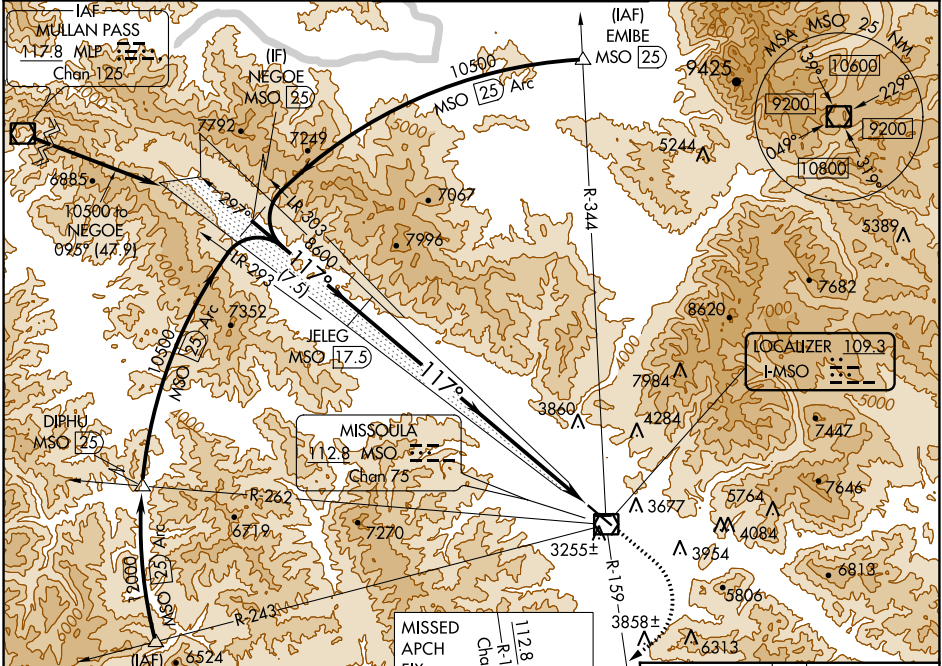
LOC I-MSO	APP CRS	Rwy Idg	9501
109.3	117°	TDZE	3200
		Apt Elev	3206

ILS Z RWY 12

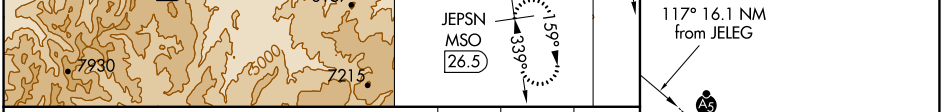
MISSOULA INTL (MISO)

DME required.	MALSR	MISSED APPROACH: Climb to 3620 then climbing right turn to 10300 on MSO VOR/DME R-159 to JEPSN/MSO 26.5 DME and hold. Missed approach requires minimum climb of 410 feet per NM to 9800; if unable to meet climb gradient, see ILS Y RWY 12.
 -12°C		

ATIS	SPOKANE APP CON *	MISSOULA TOWER *	GND CON	UNICOM
126.65	124.9 298.95	118.4 (CTAF) 377.175	121.9	122.95



ELEV 3206	TDZE 3200
-----------	-----------



NEGOE MSO 25	JELEG MSO 17.5	3620	10300	JEPSN MSO 26.5
GS 3.00° TCH 45 10500 — 117° — 8600 7.5 NM 16.1 NM				
VGSI and ILS glidepath not coincident (VGSI Angle 3.00/TCH 55).				

CATEGORY	A	B	C	D
S-ILS 12		3411/24	211 (300-½)	

NW-1, 25 FEB 2021 to 25 MAR 2021

NW-1, 25 FEB 2021 to 25 MAR 2021

