

VORTAC MSN 108.6 Chan 23	APP CRS 139°	Rwy Idg 5369 TDZE 861 Apt Elev 887
--	------------------------	---

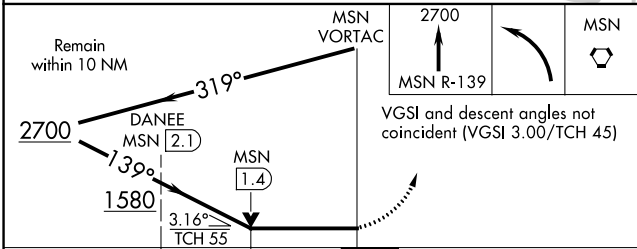
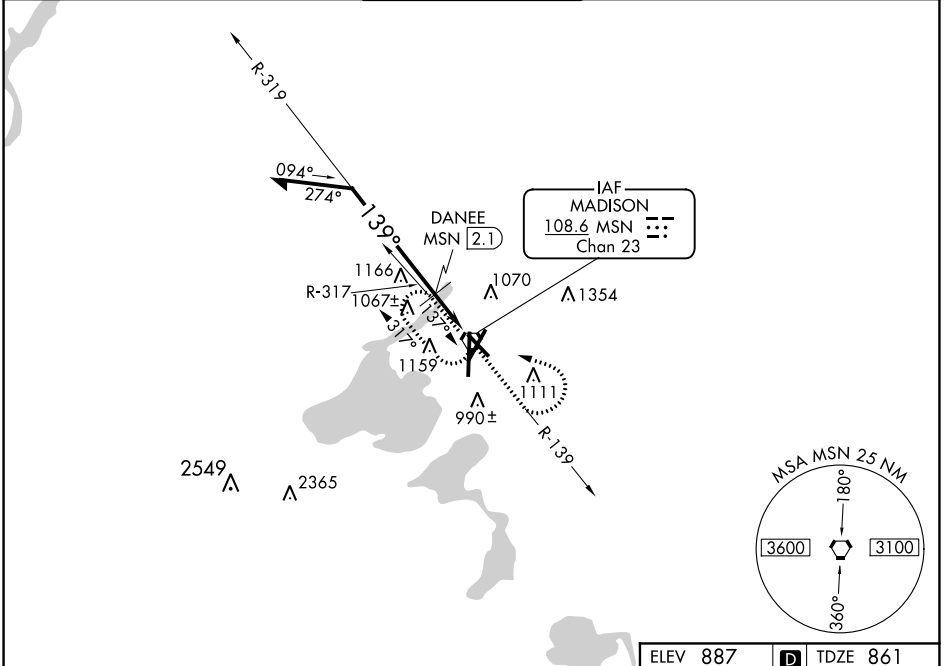
VOR RWY 14

DANE COUNTY RGNL-TRUAX FIELD (MSN)

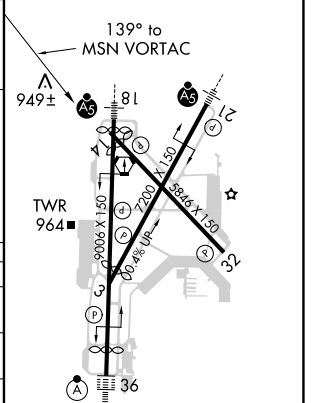
⚠ Rwy 14 helicopter visibility reduction below 3/4 SM NA.

⚠ MISSED APPROACH: Climb to 2700 via MSN R-139 then left turn direct MSN VORTAC and hold.

ATIS 124.65 278.3	MADISON APP CON * 135.45 343.7	MADISON TOWER * 119.3 (CTAF) 257.8	GND CON 121.9 348.6	CLNC DEL 121.625	UNICOM 122.95
-----------------------------	--	--	-------------------------------	----------------------------	-------------------------



ELEV 887	D TDZE 861
----------	-------------------



CATEGORY	A	B	C	D
S-14	1580-1 719 (700-1)		1580-2 719 (700-2)	
C CIRCLING	1580-1 693 (700-1)		1580-2 693 (700-2)	1700-2 3/4 813 (900-2 3/4)
DANEE FIX MINIMUMS				
S-14	1320-1 459 (500-1)		1320-1 1/2 459 (500-1 1/2)	
C CIRCLING	1520-1 633 (700-1)		1520-1 3/4 633 (700-1 3/4)	1700-2 3/4 813 (900-2 3/4)

HIRL all Rwys **Ⓚ**
 REIL Rws 3 and 32 **Ⓚ**
 REIL Rwy 14

EC-3, 25 FEB 2021 to 25 MAR 2021

EC-3, 25 FEB 2021 to 25 MAR 2021