

WAAS CH 58021 W32A	APP CRS 320°	Rwy Idg 5846 TDZE 862 Apt Elev 887
--	------------------------	--

RNAV (GPS) RWY 32

DANE COUNTY RGNL-TRUAX FIELD (MSN)



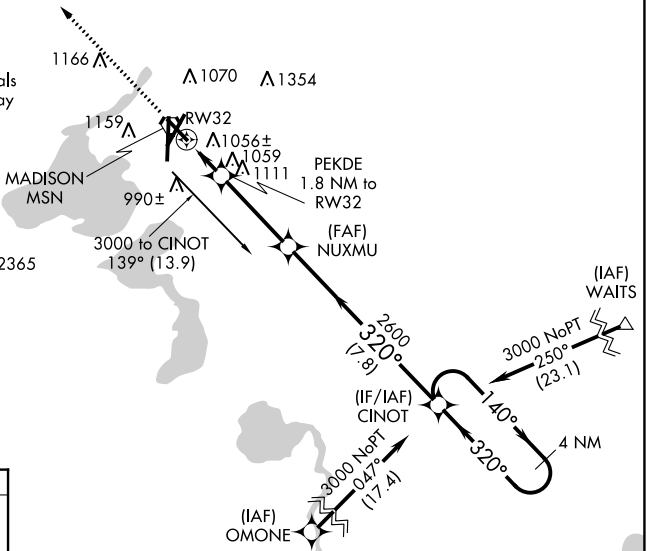
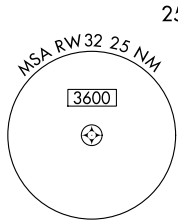
For uncompensated Baro-VNAV systems, LNAV/VNAV NA below -19°C (-2°F) or above 54°C (130°F). DME/DME RNP-0.3 NA. Helicopter visibility reduction below ¾ SM NA.

MISSED APPROACH:
Climb to 3200 direct
SIDCO and hold.

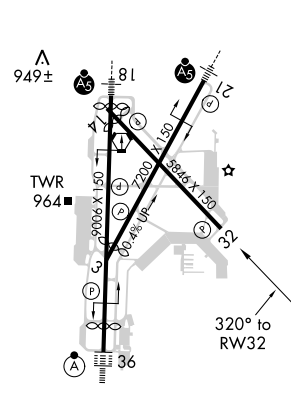
ATIS 124.65 278.3	MADISON APP CON * 135.45 343.7	MADISON TOWER * 119.3 (CTAF) 0 257.8	GND CON 121.9 348.6	CINC DEL 121.625	UNICOM 122.95
-----------------------------	--	--	-------------------------------	----------------------------	-------------------------



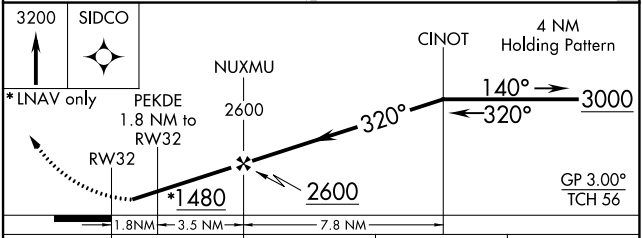
Procedure NA for arrivals on MSN VORTAC airway radials 089 CW 161.



ELEV 887	D	TDZE 862
----------	----------	----------



HIRL all Rwys
REIL Rws 3 and 32
REIL Rwy 14



CATEGORY	A	B	C	D
LPV DA	1232-1¼		370 (400-1¼)	
LNAV/VNAV DA	1237-1¼		375 (400-1¼)	
LNAV MDA	1360-1 498 (500-1)		1360-1¾ 498 (500-1¾)	
C CIRCLING	1420-1 533 (600-1)	1460-1 573 (600-1)	1460-1½ 573 (600-1½)	1700-2¾ 813 (900-2¾)

EC-3, 25 FEB 2021 to 25 MAR 2021

EC-3, 25 FEB 2021 to 25 MAR 2021