

WAAS CH 87029 W03A	APP CRS 032°	Rwy Idg TDZE Apt Elev	6769 860 887
--	------------------------	-----------------------------	---

RNAV (GPS) RWY 3

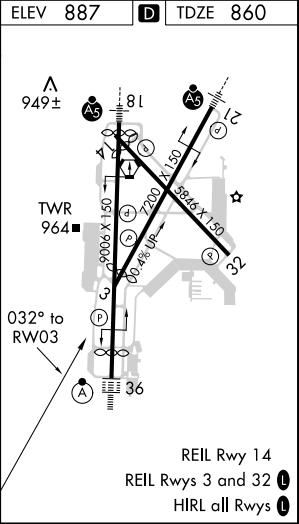
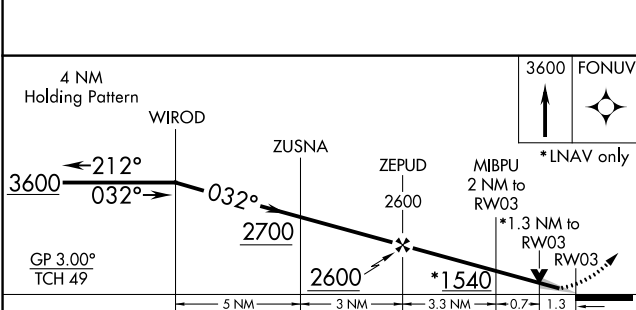
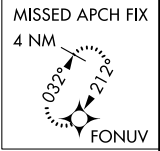
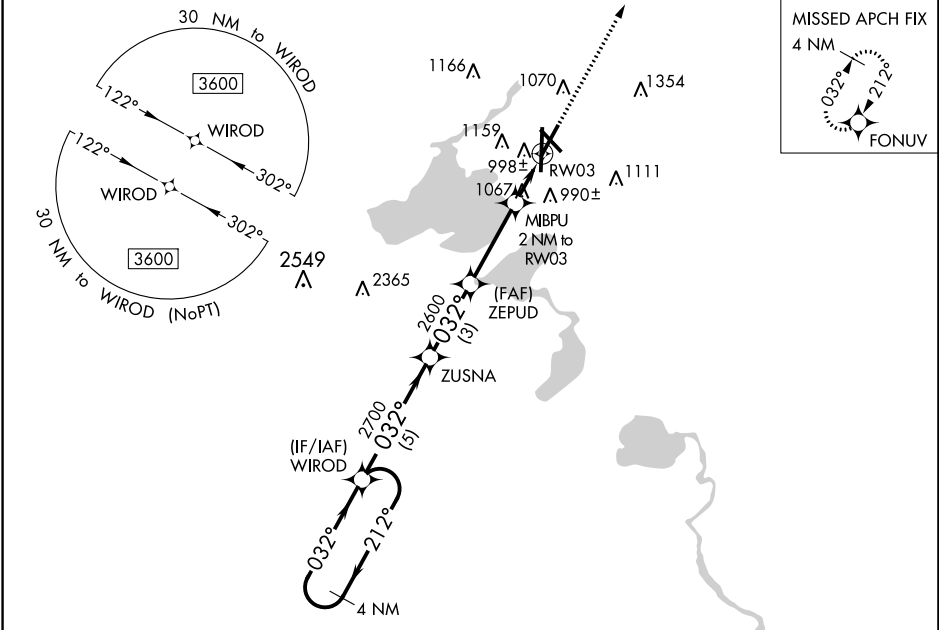
DANE COUNTY RGNL-TRUAX FIELD (MSN)



For uncompensated Baro-VNAV systems, LNAV/VNAV NA below -20°C (-4°F) or above 54°C (130°F). DME/DME RNP-0.3 NA.

MISSED APPROACH: Climb to 3600 direct FONUV and hold.

ATIS 124.65 278.3	MADISON APP CON * 135.45 343.7	MADISON TOWER * 119.3 (CTAF) 257.8	GND CON 121.9 348.6	CLNC DEL 121.625	UNICOM 122.95
-----------------------------	--	--	-------------------------------	----------------------------	-------------------------



CATEGORY	A	B	C	D
LPV DA		1060-3/4	200 (200-3/4)	
LNAV/VNAV DA		1179-1	319 (300-1)	
LNAV MDA	1320-1	460 (500-1)	1320-1 3/8	460 (500-1 3/8)
CIRCLING	1420-1 533 (600-1)	1460-1 573 (600-1)	1460-1 1/2 573 (600-1 1/2)	1700-2 3/4 813 (900-2 3/4)

EC-3, 25 FEB 2021 to 25 MAR 2021

EC-3, 25 FEB 2021 to 25 MAR 2021