

WAAS CH 40000 W30A	APP CRS 297°	Rwy Idg TDZE Apt Elev	6694 551 551
--	------------------------	-----------------------------	---

RNAV (GPS) RWY 30

NORTHWEST ALABAMA RGNL (MISL)

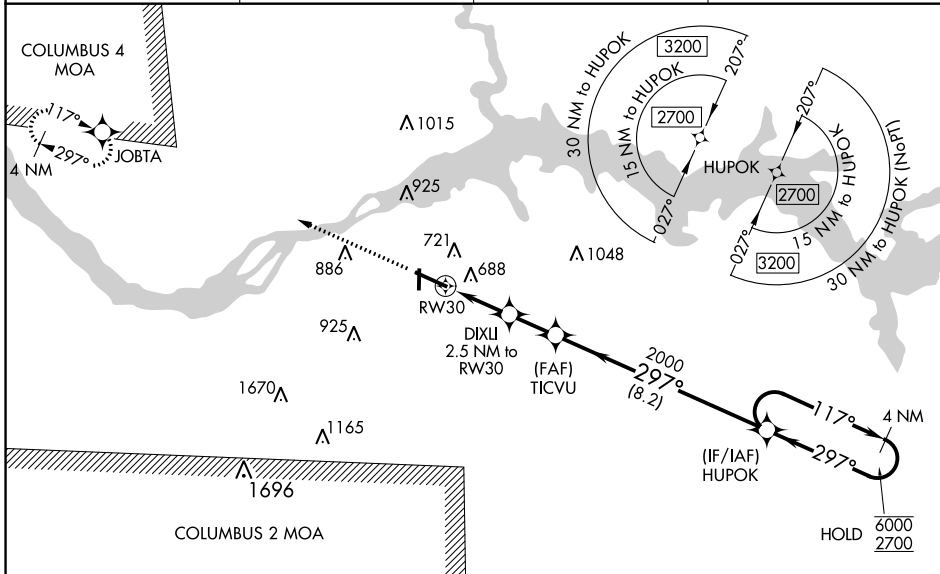
RNP APCH

For uncompensated Baro-VNAV systems, LNAV/VNAV NA below -4°C or above 54°C. When local altimeter setting not received use Decatur altimeter setting and increase LPV DA to 834, LNAV/VNAV DA to 1045 and all MDA 100 feet; increase LNAV/VNAV all Cats visibility ¼ SM, and LNAV Cat C and D visibility ⅓ SM, and Circling Cat C and D visibility ½ SM. Baro-VNAV and VDP NA when using Decatur altimeter setting. For inop ALS when using Decatur altimeter setting, increase LPV all cats visibility to ⅓ SM, and LNAV Cats C and D visibility to 1⅓ SM.

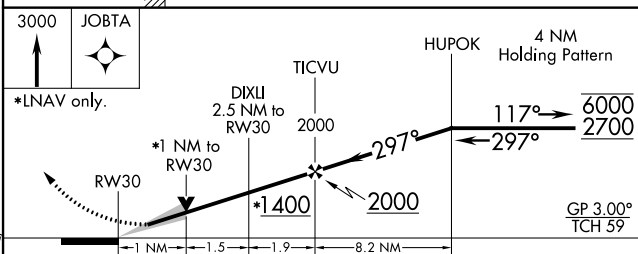
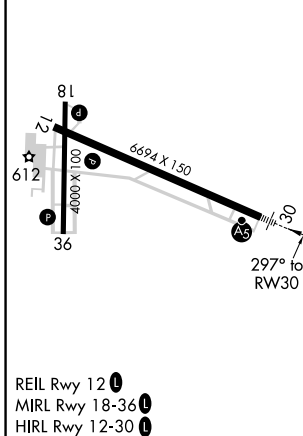


MISSED APPROACH:
Climb to 3000 direct JOBTA and hold.

ASOS 119.425	MEMPHIS CENTER 120.8 307.0	GCO 121.725	UNICOM 123.05 (CTAF)
------------------------	--------------------------------------	-----------------------	--------------------------------



ELEV 551	TDZE 551
----------	----------



CATEGORY	A	B	C	D
LPV DA		751-½	200 (200-½)	
LNAV/VNAV DA		962-⅞	411 (500-⅞)	
LNAV MDA	940-½	389 (400-½)	940-⅝	389 (400-⅝)
C CIRCLING	1040-1	489 (500-1)	1280-2 729 (800-2)	1280-2¼ 729 (800-2¼)

SE-4, 25 FEB 2021 to 25 MAR 2021

SE-4, 25 FEB 2021 to 25 MAR 2021