


LOC I-MSL <b>109.7</b>	APP CRS <b>297°</b>	Rwy Idg TDZE Apt Elev	<b>6694</b> <b>551</b> <b>551</b>
---------------------------	------------------------	-----------------------------	---

# ILS Z or LOC Z RWY 30

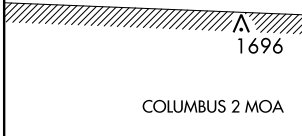
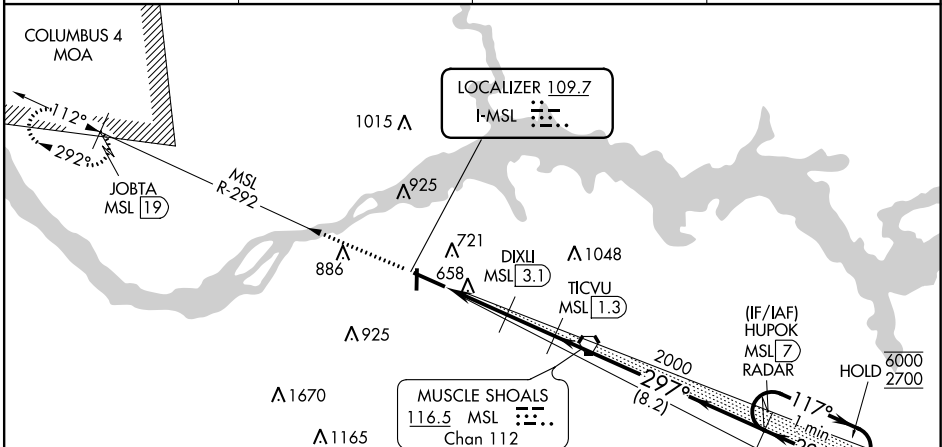
NORTHWEST ALABAMA RGNL (MSL)

DME required. RADAR required for procedure entry.

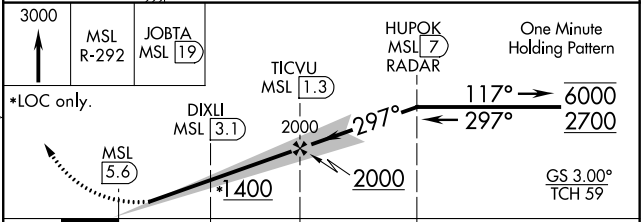
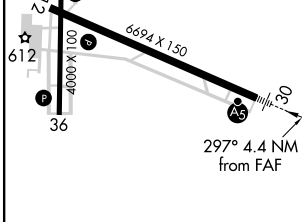
⚠ When local altimeter setting not received, use Decatur altimeter setting: Increase DA to 833 feet and all MDA 100 feet; Increase S-LOC 30 Cat C, D visibility 3/8 SM and Circling Cat C, D visibility 1/2 SM. DME from MSL VORTAC. Simultaneous reception of I-MSL and MSL DME required. For inop ALS increase S-LOC 30 Cats C/D visibility to 1 SM. For inop ALS when using Decatur altimeter setting, increase S-ILS 30 all Cats visibility to 3/8 SM, and increase S-LOC 30 Cats C/D to 1 3/8 SM.

MALS R  MISSED APPROACH: Climb to 3000 on MSL VORTAC R-292 to JOBTA/MSL VORTAC 19 DME and hold.

ASOS <b>119.425</b>	MEMPHIS CENTER <b>120.8 307.0</b>	GCO <b>121.725</b>	UNICOM <b>123.05 (CTAF)</b>
------------------------	--------------------------------------	-----------------------	--------------------------------



ELEV 551	TDZE 551
----------	----------



CATEGORY	A	B	C	D
S-ILS 30	751-1/2		200 (200-1/2)	
S-LOC 30	920-1/2	369 (400-1/2)	920-5/8	369 (400-5/8)
<b>C</b> CIRCLING	1040-1	489 (500-1)	1280-2 729 (800-2)	1280-2 1/4 729 (800-2 1/4)

REIL Rwy 12   
 MIRL Rwy 18-36   
 HIRL Rwy 12-30 

SE-4, 25 FEB 2021 to 25 MAR 2021

SE-4, 25 FEB 2021 to 25 MAR 2021