

APP CRS 213°	Rwy Idg 3676
	TDZE 9
	Apt Elev 11

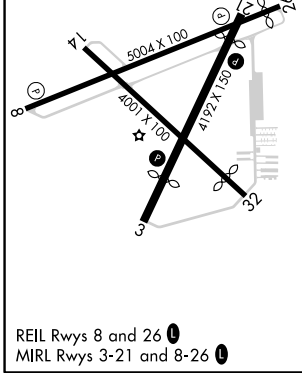
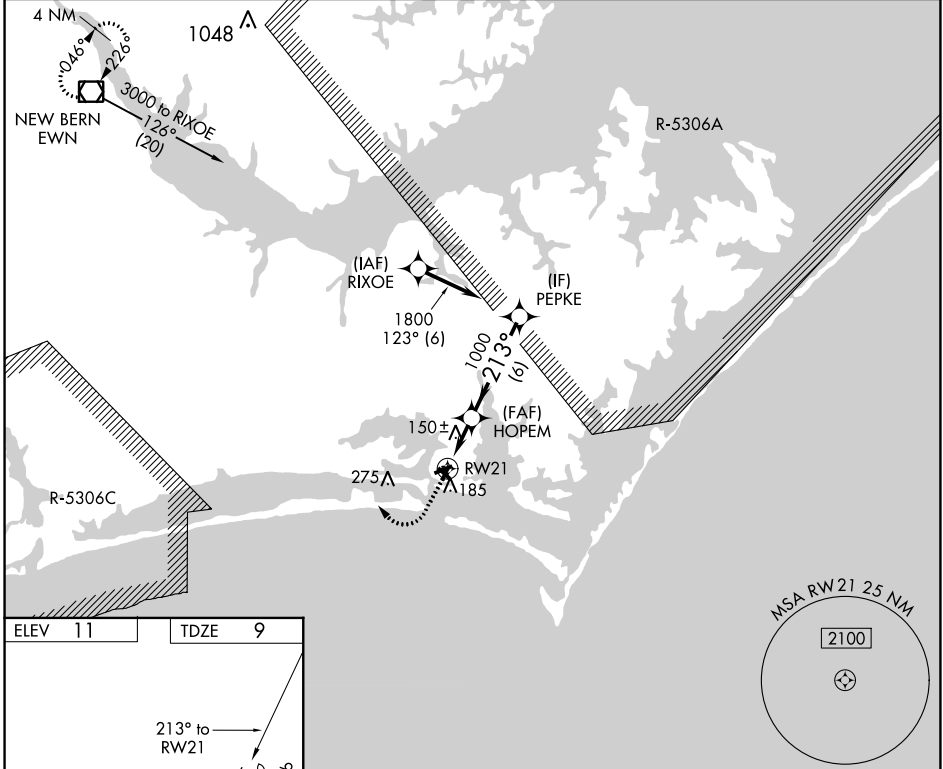
RNAV (GPS) RWY 21

MICHAEL J SMITH FIELD (MR.H)

⚠ Circling Rwy 8, 14, 32 NA at night. DME/DME RNP-0.3 NA. ATC clearance required to penetrate R-5306A and R-5306C. Rwy 21 helicopter visibility reduction below ¼ SM NA. When local altimeter setting not received, use Cherry Point MCAS altimeter setting and increase all MDA 40 feet. VDP NA when using Cherry Point MCAS altimeter setting. Rwy 8, 14, 32 helicopter visibility reduction below 1 SM NA.

MISSED APPROACH:
Climb to 500 then climbing right turn to 3000 direct EWN VOR/DME and hold.

ASOS 135.375	CHERRY POINT APP CON 124.1 268.7	CLNC DEL 125.65	UNICOM 122.8 (CTAF) 0
------------------------	--	---------------------------	---------------------------------



ELEV 11	TDZE 9	500		3000		EWN	VGSi and descent angles not coincident (VGSi angle 4.00/TCH 54).	
213° to RWY 21		↑		↷		□	PEPKE	
1.1		1.9		6		HOPEM		1800
RWY 21		1.1		1.9		1000		213°
1.1		1.9		6				
CATEGORY	A	B	C	D				
LNAV MDA	400-1	391 (400-1)	NA					
CIRCLING	540-1	529 (600-1)	NA					

SE-2, 25 FEB 2021 to 25 MAR 2021

SE-2, 25 FEB 2021 to 25 MAR 2021