

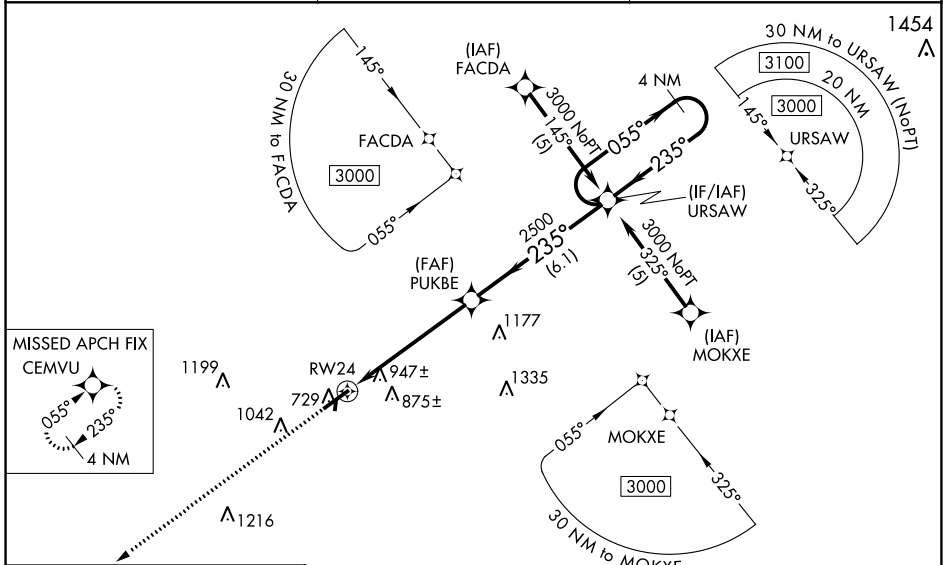
WAAS CH 69515 W24A	APP CRS 235°	Rwy Idg TDZE 681 Apt Elev 681
--	------------------------	---

RNAV (GPS) RWY 24

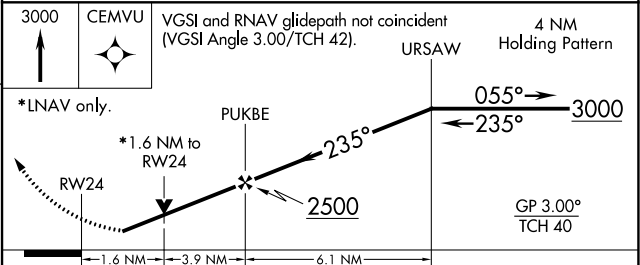
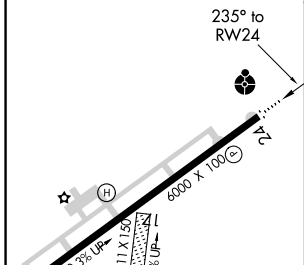
MAURY COUNTY (MRC)

RNP APCH.	ODALS	MISSED APPROACH: Climb to 3000 direct CEMVU and hold.
<p>⚠ Inop table does not apply to LNAV/VNAV Cats A, B, and C and LNAV Cat C. For uncompensated Baro-VNAV systems, LNAV/VNAV NA below -16°C or above 47°C. ⚠ Rwy 24 helicopter visibility reduction below ¼ SM NA. When local altimeter setting not received, use Nashville Intl altimeter setting and increase all DA 109 feet and all MDA 120 feet and increase LPV all Cats visibility ½ mile, increase LNAV/VNAV all Cats visibility ½ mile, and LNAV Cats C and D visibility ½ mile, and increase Circling Cats C and D visibility ½ mile. Baro-VNAV and VDP NA when using Nashville Intl altimeter setting.</p>		

AWOS-3 128.625	MEMPHIS CENTER 125.85 379.25	UNICOM 122.8 (CTAF) 0
--------------------------	--	---------------------------------



ELEV 681	D	TDZE 681
-----------------	----------	-----------------



CATEGORY	A	B	C	D
LPV DA	981-1		300 (300-1)	
LNAV/ VNAV DA	1329-2¼		648 (700-2¼)	
LNAV MDA	1220-¾	539 (600-¾)	1220-1½	539 (600-1½)
CIRCLING	1320-1	639 (700-1)	1380-2	1420-2¼
			699 (700-2)	739 (800-2¼)

SE-1, 25 FEB 2021 to 25 MAR 2021

SE-1, 25 FEB 2021 to 25 MAR 2021