

APP CRS	Rwy Idg	5000
206°	TDZE	202
	Apt Elev	203

RNAV (GPS) RWY 21

TELFAIR-WHEELER (MQW)

RNP APCH.

▼ Procedure NA at night. Rwy 21 helicopter visibility reduction below 1 SM NA. Use Vidalia altimeter setting; when not received, use Alma altimeter setting and increase all MDA 20 feet and LNAV Cat C/D visibility 1/8 SM.
▲ NA

MISSED APPROACH: Climbing right turn to 3000 direct FINAN and hold.

VDI AWOS-3
119.925

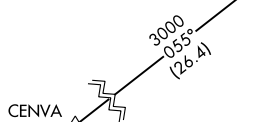
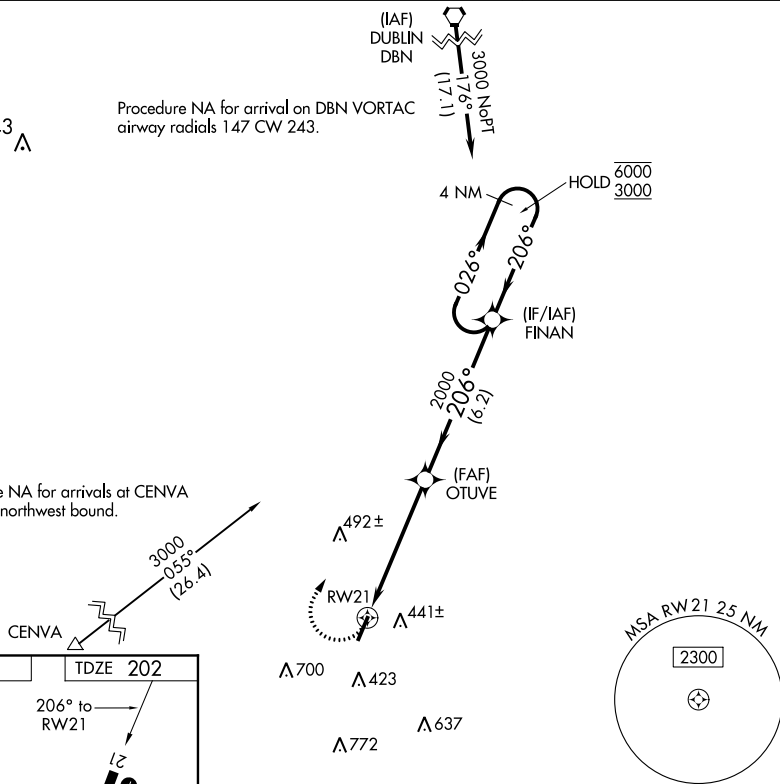
JACKSONVILLE CENTER
127.575 269.025

CTAF
122.9 0

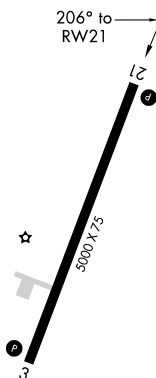
843 **▲**

Procedure NA for arrival on DBN VORTAC airway radials 147 CW 243.

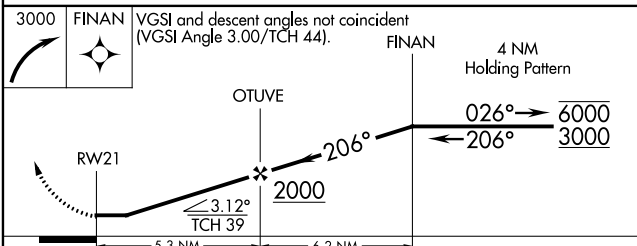
Procedure NA for arrivals at CENVA on V362 northwest bound.



ELEV	203	TDZE	202
------	-----	------	-----



REIL Rwy 21 **0**
MIRL Rwy 3-21 **0**



CATEGORY	A	B	C	D
LNAV MDA	780-1	578 (600-1)	780-1 1/8	578 (600-1 1/8)
CIRCLING	880-1	677 (700-1)	960-2 1/4 757 (800-2 1/4)	1140-3 937 (1000-3)

SE-4, 25 FEB 2021 to 25 MAR 2021

SE-4, 25 FEB 2021 to 25 MAR 2021