

WAAS CH <b>93732</b> <b>W32A</b>	APP CRS <b>322°</b>	Rwy Idg TDZE <b>1131</b> Apt Elev <b>1136</b>	<b>4002</b>
--	------------------------	---	-------------

# RNAV (GPS) RWY 32

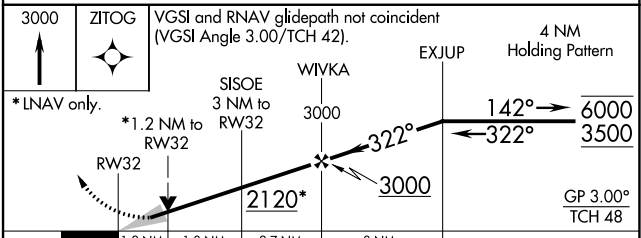
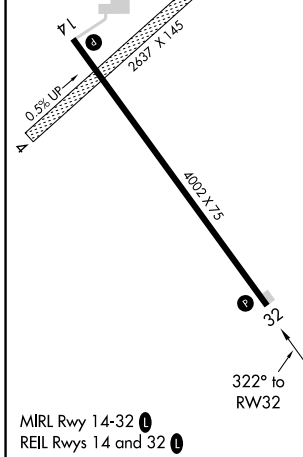
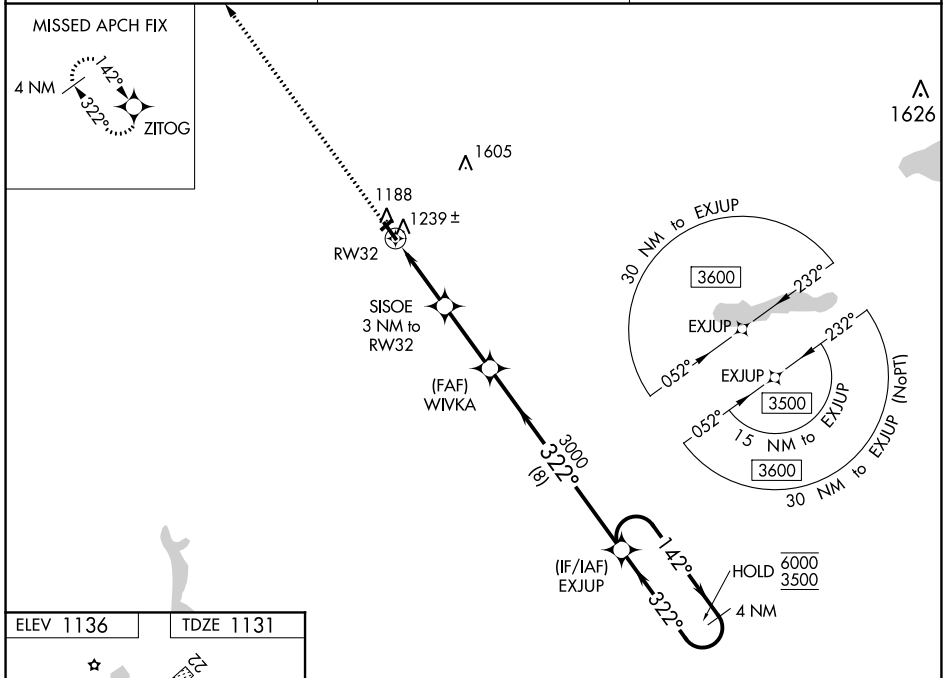
MORRIS MUNI-CHARLIE SCHMIDT FIELD (MOX)

**RNP APCH.**

▼ Circling NA to Rwy 4 and 22. Baro-VNAV and VDP NA when using Benson altimeter setting.  
 ▲ For uncompensated Baro-VNAV systems, LNAV/VNAV NA below -17°C or above 54°C.  
 When local altimeter setting not received, use Benson altimeter setting and increase LPV DA to 1440 feet, LNAV/VNAV DA to 1594 feet and all MDA 60 feet and increase LNAV and Circling Cat C visibility 1/4 SM.

MISSED APPROACH:  
 Climb to 3000 direct ZITOG and hold.

AWOS-3 <b>109.6</b>	MINNEAPOLIS CENTER <b>126.1 269.2</b>	UNICOM <b>122.8 (CTAF) 0</b>
------------------------	--	---------------------------------



CATEGORY	A	B	C	D
LPV DA	1381-1 250 (300-1)			NA
LNAV/VNAV DA	1535-1 3/8 404 (400-1 1/8)			NA
LNAV MDA	1540-1	409 (500-1)	1540-1 1/8 409 (500-1 1/8)	NA
<input checked="" type="checkbox"/> CIRCLING	1560-1 424 (500-1)	1600-1 464 (500-1)	1860-2 724 (800-2)	NA

NC-1, 25 FEB 2021 to 25 MAR 2021

NC-1, 25 FEB 2021 to 25 MAR 2021