

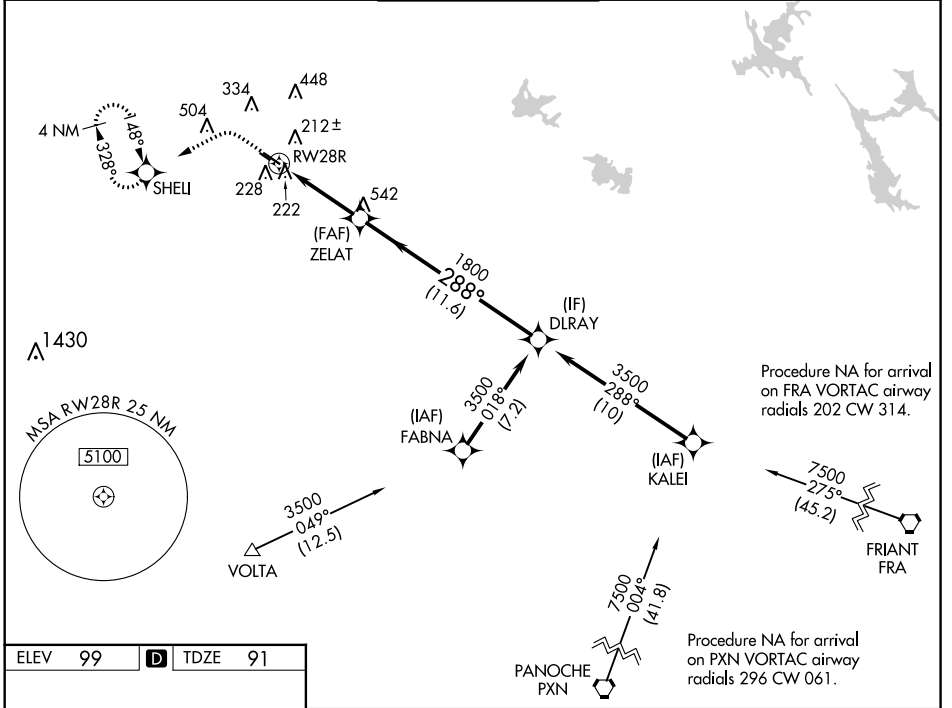
WAAS CH 70609 W28A	APP CRS 288°	Rwy Idg TDZE Apt Elev	5904 91 99
--	------------------------	-----------------------------	---------------------------------------

RNAV (GPS) RWY 28R

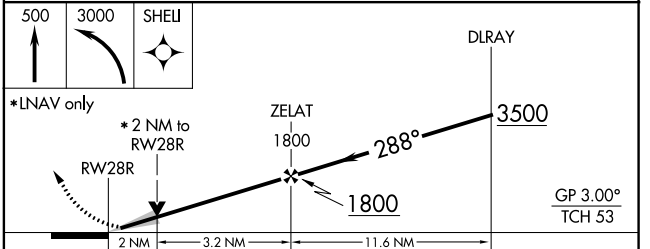
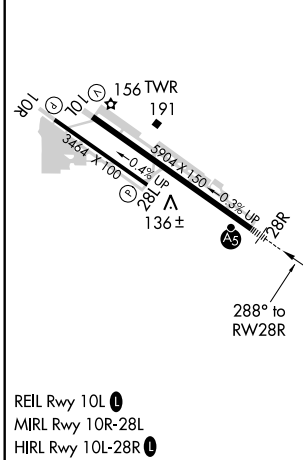
MODESTO CITY-COUNTY-HARRY SHAM FIELD (MOD)

RNP APCH.	MALSR	MISSED APPROACH: Climb to 500 then climbing left turn to 3000 direct SHELI and hold, continue climb-in-hold to 3000.
<p>⚠ For uncompensated Baro-VNAV systems, LNAV/VNAV NA below -1°C or above 54°C. For inoperative ALS, increase LNAV/VNAV all Cats visibility to 7/5 SM.</p>		

ATIS 127.7	NORCAL APP CON 120.95 269.45	MODESTO TOWER* 125.3 (CTAF) 257.8	GND CON 121.7	UNICOM 122.95
----------------------	--	---	-------------------------	-------------------------



ELEV 99	D	TDZE 91
---------	----------	---------



CATEGORY	A	B	C	D
LPV DA		291-1/2	200 (200-1/2)	
LNAV/VNAV DA		393-1/2	302 (300-1/2)	
LNAV MDA	480-1/2	389 (400-1/2)	480-5/8	389 (400-5/8)
C CIRCLING	540-1 441 (500-1)	600-1 501 (600-1)	700-13/4 601 (700-13/4)	820-21/4 721 (800-21/4)

SW-2, 25 FEB 2021 to 25 MAR 2021

SW-2, 25 FEB 2021 to 25 MAR 2021