

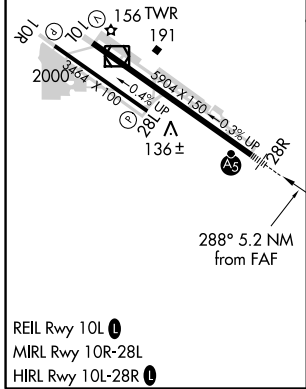
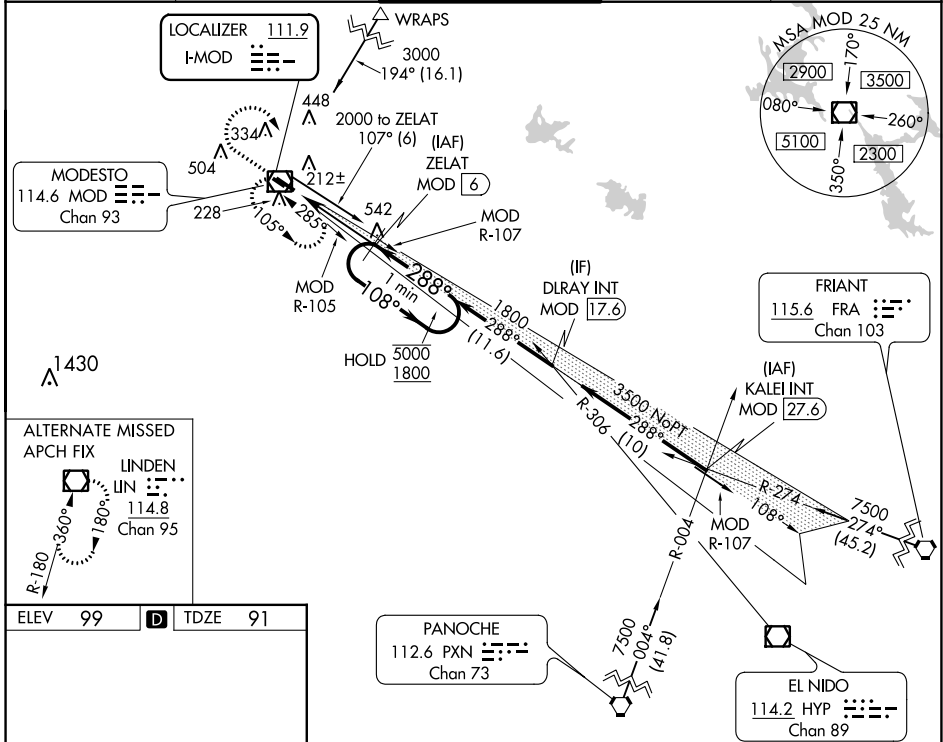
LOC I-MOD 111.9	APP CRS 288°	Rwy Idg TDZE Apt Elev	5904 91 99
---------------------------	------------------------	-----------------------------	---------------------------------------

ILS or LOC RWY 28R

MODESTO CITY-COUNTY-HARRY SHAM FIELD (MOD)

DME required for LOC only.		MALSR	MISSED APPROACH: Climb to 1500 then climbing right turn to 2000 direct MOD VOR/DME and hold.
<p>Autopilot coupled approach NA below 1080. DME from MOD VOR/DME. Simultaneous reception of I-MOD and MOD DME required. For inop ALS, increase S-LOC 28R Cat C/D visibility to 1 3/8 SM.</p>			

ATIS 127.7	NORCAL APP CON 120.95 269.45	MODESTO TOWER* 125.3 (CTAF) 257.8	GND CON 121.7	UNICOM 122.95
----------------------	----------------------------------------	---------------------------------------------	-------------------------	-------------------------



CATEGORY	A	B	C	D
S-ILS 28R	291-1/2 200 (200-1/2)			
S-LOC 28R	580-1/2 489 (500-1/2)	580-1 489 (500-1)		
CIRCLING	580-1 481 (500-1)	600-1 501 (600-1)	700-1 3/4 601 (700-1 3/4)	820-2 1/4 721 (800-2 1/4)

SW-2, 25 FEB 2021 to 25 MAR 2021

SW-2, 25 FEB 2021 to 25 MAR 2021