

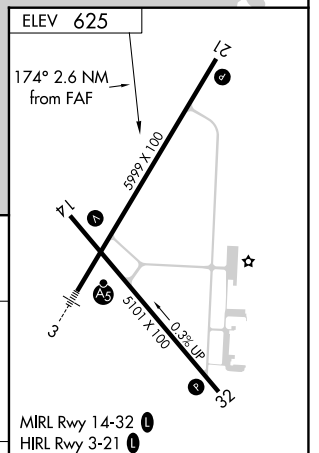
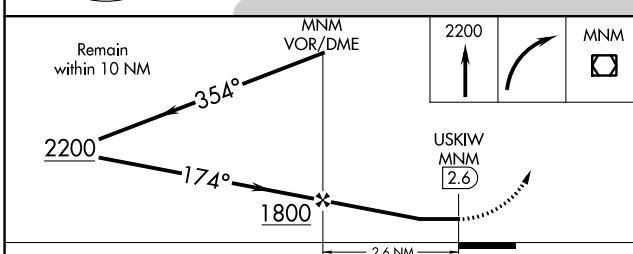
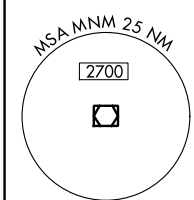
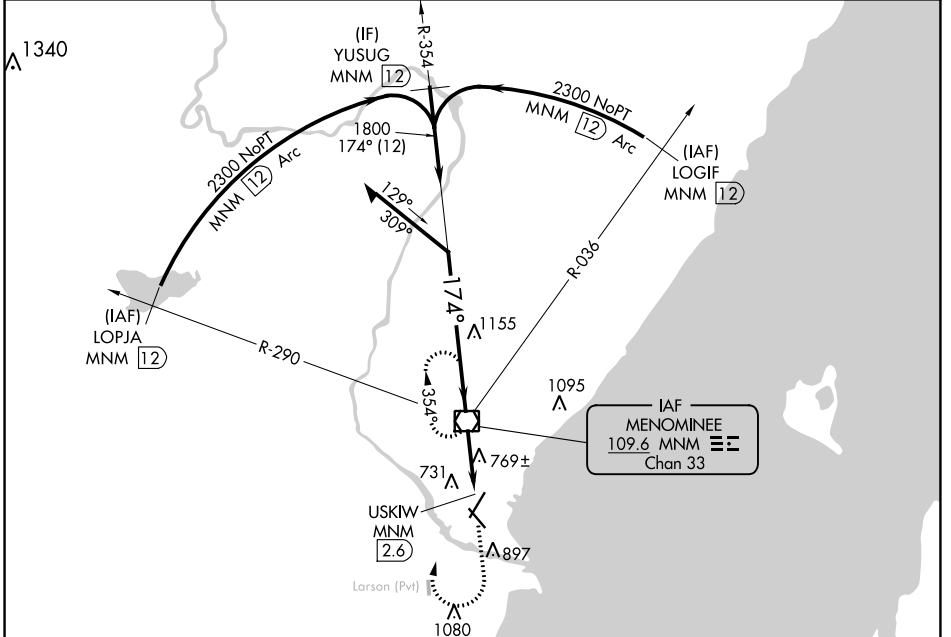
VOR/DME MNM 109.6 Chan 33	APP CRS 174°	Rwy Idg TDZE Apt Elev 625	N/A N/A
---	------------------------	---	--------------------------

VOR-A
MENOMINEE RGNL (MNM)

⚠ Circling Rwy 14, 32 NA at night. When local altimeter setting not received, use Sturgeon Bay altimeter setting and increase all MDA 60 feet, increase Circling Cat C/D visibility ¼ mile.

MISSED APPROACH: Climb to 2200 then right turn direct MNM VOR/DME and hold.

AWOS-3PT 109.6	GREEN BAY APP CON* 120.3 338.2	UNICOM 122.8 (CTAF)
--------------------------	--	-------------------------------



CATEGORY	A		B		C		D		FAF to MAP 2.6 NM					
	1200-1		575 (600-1)		1200-1½		1380-2½		Knots	60	90	120	150	180
C CIRCLING					575 (600-1½)		755 (800-2½)		Min:Sec	2:36	1:44	1:18	1:02	0:52

EC-1, 25 FEB 2021 to 25 MAR 2021

EC-1, 25 FEB 2021 to 25 MAR 2021