

NDB MNI 381	APP CRS 026°	Rwy Idg TDZE Apt Elev	3602 102 104
-----------------------	------------------------	-----------------------------	---

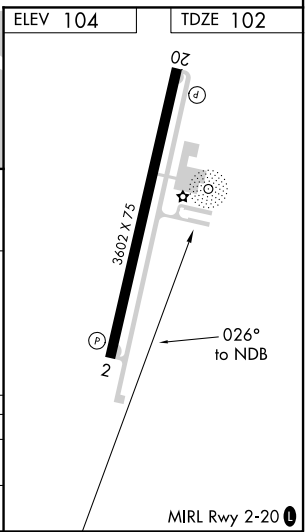
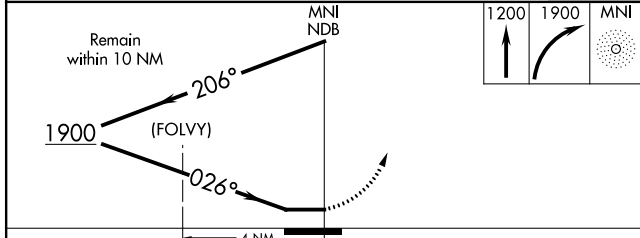
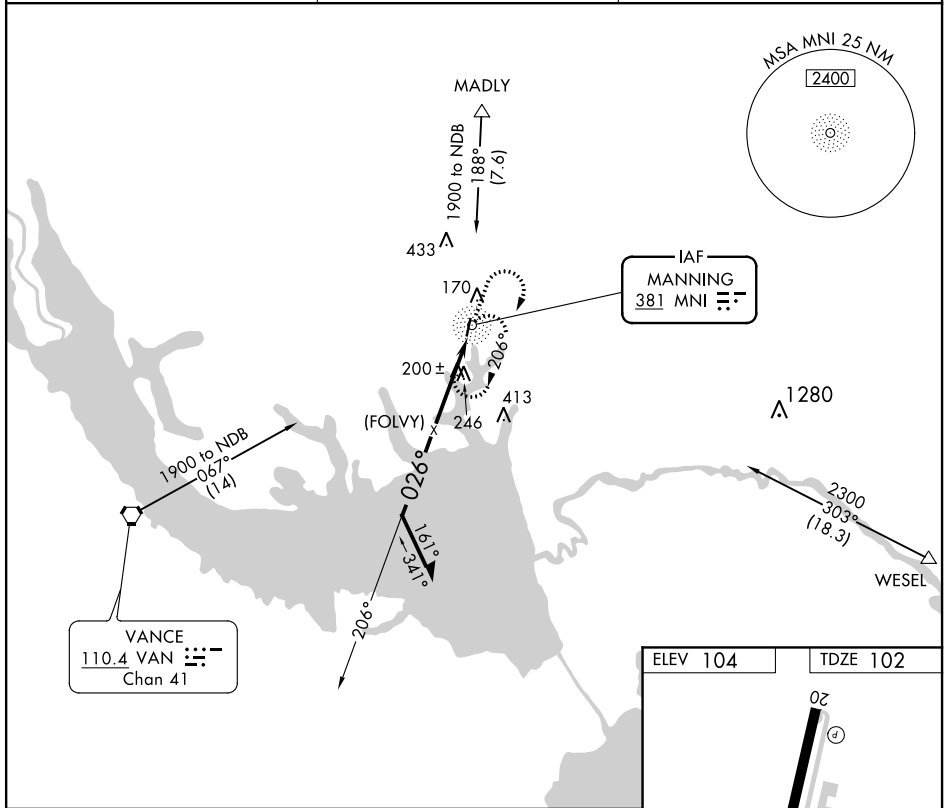
NDB or GPS RWY 2

SANTEE COOPER RGNL (MNI)

⚠ When local altimeter setting not received, use Florence altimeter setting.

⚠ MISSED APPROACH: Climb to 1200 then climbing right turn to 1900 direct MNI NDB and hold.

AWOS-3 120.175	SHAW APP CON★ 125.4 318.1	UNICOM 122.8 (CTAF) 0
--------------------------	-------------------------------------	---------------------------------



CATEGORY	A	B	C	D
S-2	660-1 558 (600-1)		660-1½ 558 (600-1½)	660-1¾ 558 (600-1¾)
CIRCLING	660-1 556 (600-1)		660-1½ 556 (600-1½)	660-2 556 (600-2)

SE-2, 25 FEB 2021 to 25 MAR 2021

SE-2, 25 FEB 2021 to 25 MAR 2021