

WAAS CH <b>73032</b> <b>W10A</b>	APP CRS <b>099°</b>	Rwy Idg TDZE <b>1179</b> Apt Elev <b>1182</b>
--	------------------------	---

# RNAV (GPS) RWY 10

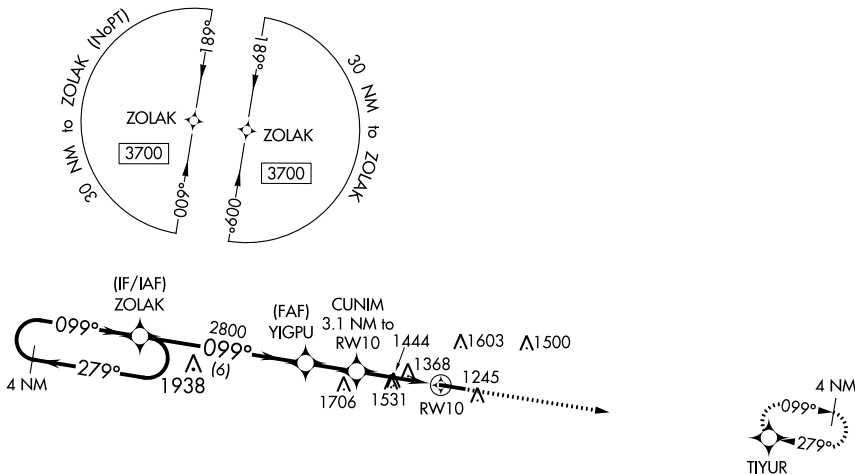
MOUNTAIN VIEW (MNF)

**NA** Procedure NA at night. DME/DME RNP-0.3 NA. Helicopter visibility reduction below 1 SM NA. Use West Plains altimeter setting, when not received, use Fort Leonard Wood altimeter setting and increase all MDA 80 feet; increase LP Cats C and D visibility ¼ mile, increase LNAV Cat B visibility ¼ mile, LNAV Cats C and D visibility ½ mile, and increase Circling Cats B and C visibility ¼ mile.

MISSED APPROACH: Climb to 3700 direct TIYUR and hold.

KANSAS CITY CENTER  
**128.35 284.675**

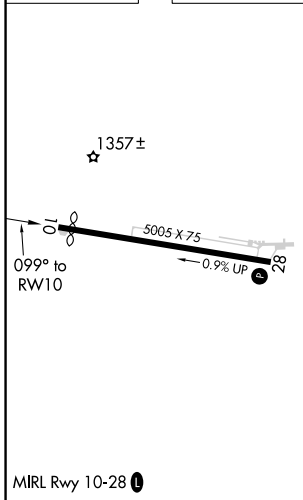
UNICOM  
**122.8 (CTAF) 0**



NC-3, 25 FEB 2021 to 25 MAR 2021

NC-3, 25 FEB 2021 to 25 MAR 2021

ELEV 1182	TDZE 1179
-----------	-----------



		Visual Segment - Obstacles.			
		3700	TIYUR		
CATEGORY		A	B	C	D
LP	MDA	1740-1	561 (600-1)	1740-1½	561 (600-1½)
LNAV	MDA	1820-1	641 (700-1)	1820-1⅞	641 (700-1⅞)
CIRCLING		1880-1 698 (700-1)	2080-1¼ 898 (900-1¼)	2080-2¾ 898 (900-2¾)	2180-3 998 (1000-3)