

WAAS CH <b>42600</b> <b>W04A</b>	APP CRS <b>043°</b>	Rwy Idg <b>5680</b> TDZE <b>2629</b> Apt Elev <b>2630</b>
--	------------------------	---

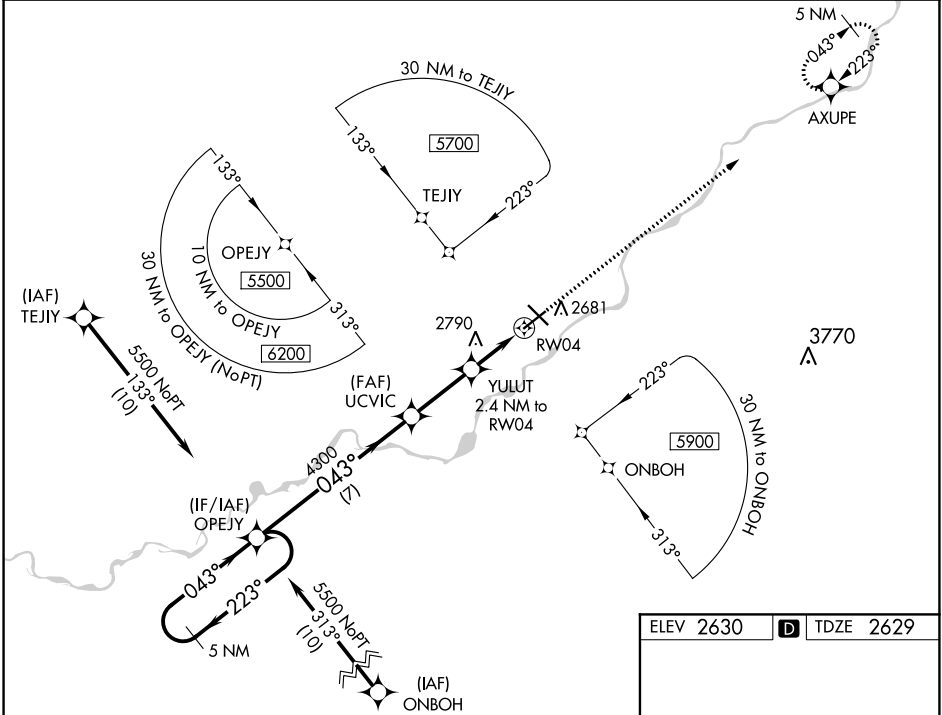
# RNAV (GPS) RWY 4

FRANK WILEY FIELD (MLS)

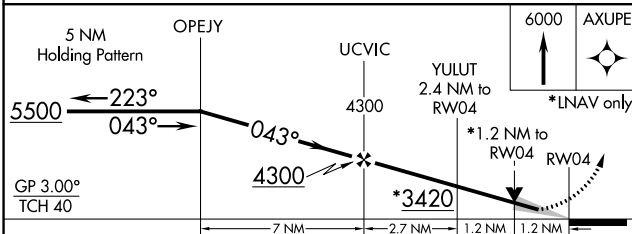
**⚠** For uncompensated Baro-VNAV systems, LNAV/VNAV NA below -25°C (-13°F) or above 54°C (130°F). Baro-VNAV and VDP NA when using Forsyth altimeter setting. DME/DME RNP -0.3 NA. When local altimeter setting not received, use Forsyth altimeter setting: increase LPV and LNAV/VNAV DA to 2967 and all visibility 1/8 mile. Increase all MDA 100 feet and all Cat C and D visibility 1/4 mile.

**MISSED APPROACH:** Climb to 6000 direct AXUPE and hold, continue climb-in-hold to 6000.

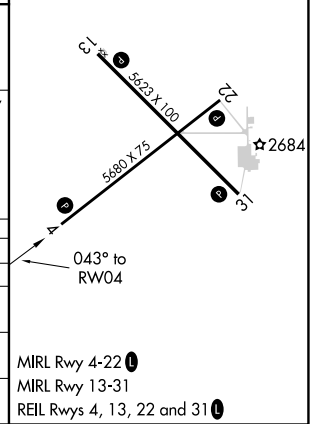
ASOS <b>135.575</b>	SALT LAKE CENTER <b>126.85 305.2</b>	UNICOM <b>123.0 (CTAF) 0</b>
------------------------	---	---------------------------------



ELEV 2630	<b>D</b> TDZE 2629
-----------	--------------------



CATEGORY	A	B	C	D
LPV DA		2879-1	250 (300-1)	
LNAV/VNAV DA		2879-1	250 (300-1)	
LNAV MDA	3040-1	411 (500-1)	3040-1 1/8	411 (500-1 1/8)
<b>C</b> CIRCLING	3060-1 430 (500-1)	3100-1 470 (500-1)	3120-1 1/2 490 (500-1 1/2)	3320-2 1/4 690 (700-2 1/4)



MIRL Rwy 4-22 **0**  
MIRL Rwy 13-31  
REIL Rws 4, 13, 22 and 31 **0**

NW-1, 25 FEB 2021 to 25 MAR 2021

NW-1, 25 FEB 2021 to 25 MAR 2021