

WAAS CH <b>97340</b> <b>W13A</b>	APP CRS <b>126°</b>	Rwy Idg <b>5623</b> TDZE <b>2630</b> Apt Elev <b>2630</b>
--	------------------------	---

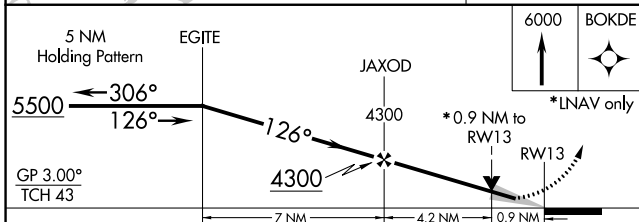
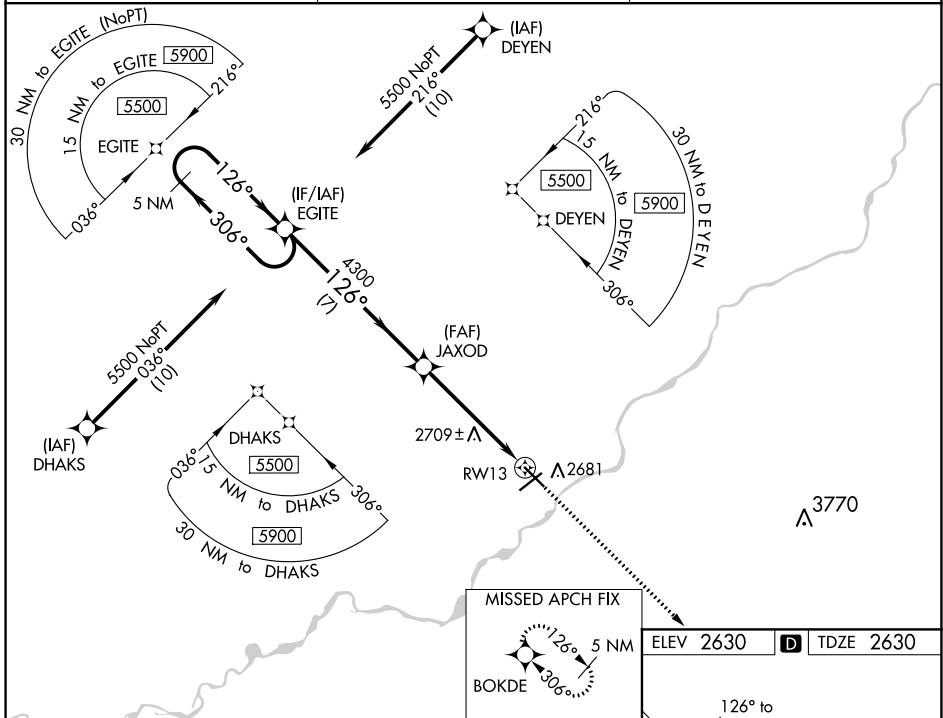
# RNAV (GPS) RWY 13

FRANK WILEY FIELD (MLS)

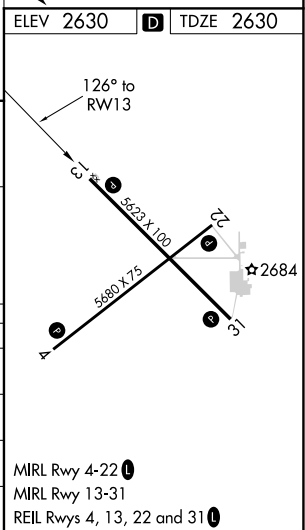
**⚠** For uncompensated Baro-VNAV systems, LNAV/VNAV NA below -24°C (-11°F) or above 54°C (130°F). Baro-VNAV and VDP NA when using Forsyth altimeter setting. DME/DME RNP-0.3 NA. When local altimeter setting not received, use Forsyth altimeter setting; increase LPV and LNAV/VNAV DA to 2968 and all visibility 1/8 mile. Increase all MDA 100 feet and all Cat C and D visibility 1/4 mile.

**MISSED APPROACH:** Climb to 6000 direct BOKDE and hold, continue climb-in-hold to 6000.

ASOS <b>135.575</b>	SALT LAKE CENTER <b>126.85 305.2</b>	UNICOM <b>123.0 (CTAF) 0</b>
------------------------	---	---------------------------------



CATEGORY	A	B	C	D
LPV DA		2880-1	250 (300-1)	
LNAV/VNAV DA		2880-1	250 (300-1)	
LNAV MDA		2960-1	330 (400-1)	
<b>C</b> CIRCLING	3060-1 430 (500-1)	3100-1 470 (500-1)	3120-1½ 490 (500-1½)	3320-2¼ 690 (700-2¼)



NW-1, 25 FEB 2021 to 25 MAR 2021

NW-1, 25 FEB 2021 to 25 MAR 2021