

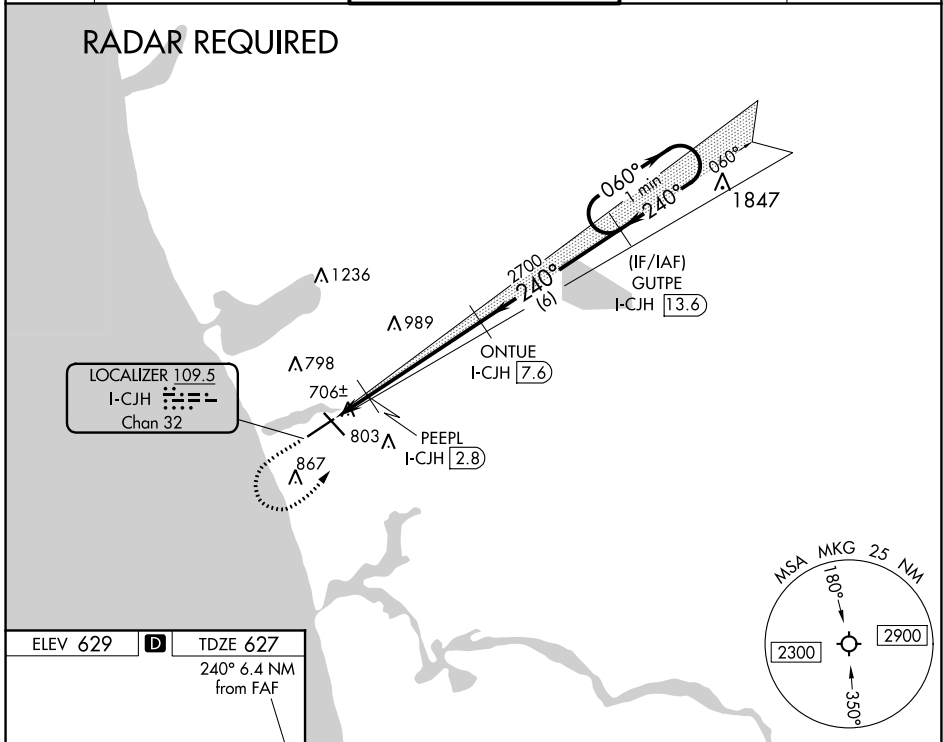
LOC/DME I-CJH 109.5 Chan 32	APP CRS 240°	Rwy Idg TDZE Apt Elev	6501 627 629
---	------------------------	-----------------------------	---

ILS or LOC RWY 24
MUSKEGON COUNTY (MKG)

	DME required. RADAR required. RNAV 1-GPS required.		MISSED APPROACH: Climb to 2500 then climbing left turn to 3000 direct GUTPE and hold.
--	--	--	---

ATIS 124.3	GREAT LAKES APP CON ★ 119.8 290.35 (North) 133.825 290.35 (South)	MUSKEGON TOWER ★ 126.25 (CTAF) 343.725	GND CON 121.6	UNICOM 122.95
----------------------	---	---	-------------------------	-------------------------

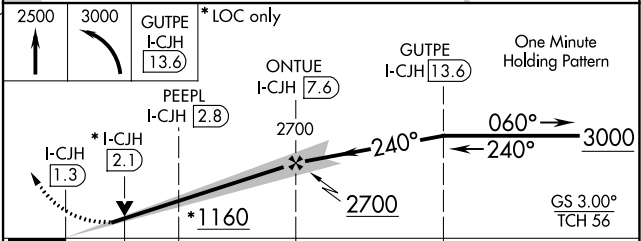
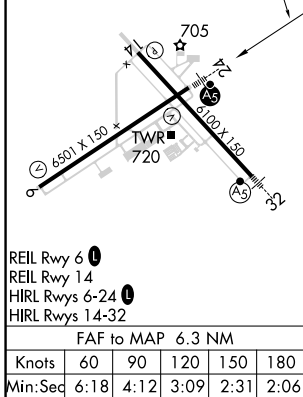
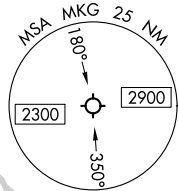
RADAR REQUIRED



EC-1, 25 FEB 2021 to 25 MAR 2021

EC-1, 25 FEB 2021 to 25 MAR 2021

ELEV 629	TDZE 627
240° 6.4 NM from FAF	



REIL Rwy 6	REIL Rwy 14	HIRL Rwys 6-24	HIRL Rwys 14-32		
FAF to MAP 6.3 NM					
Knots	60	90	120	150	180
Min:Sec	6:18	4:12	3:09	2:31	2:06
CIRCLING	1080-1 451 (500-1)	1180-1 551 (600-1)	1200-1½ 571 (600-1½)	1200-2 571 (600-2)	