

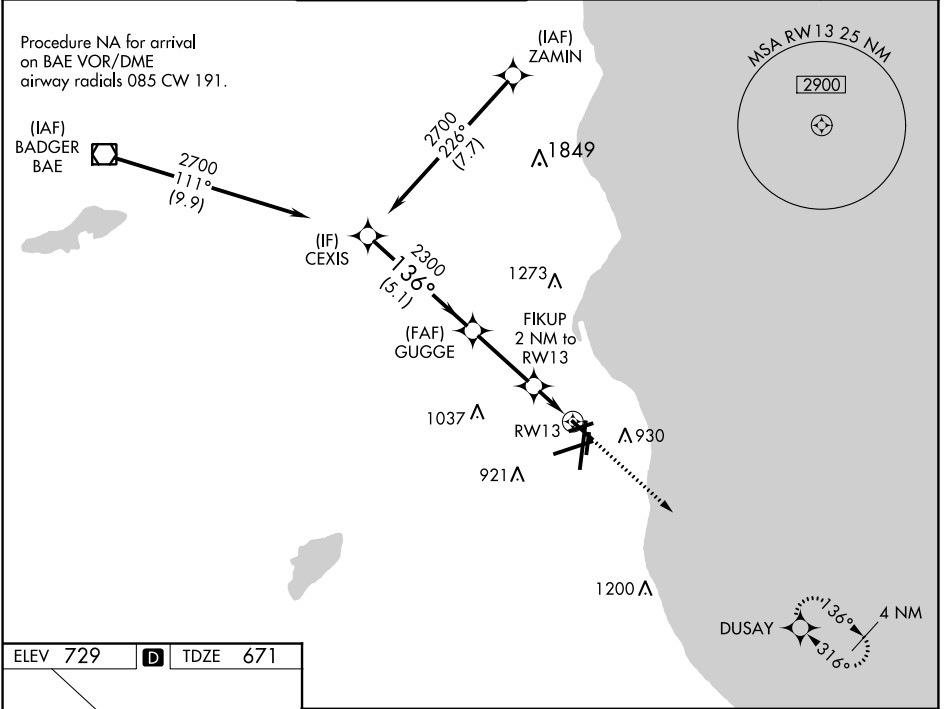
WAAS CH 99342 W13A	APP CRS 136°	Rwy Idg TDZE Apt Elev	4797 671 729
--	------------------------	-----------------------------	---

RNAV (GPS) RWY 13

GENERAL MITCHELL INTL (MKE)

RNP APCH.		MISSED APPROACH: Climb to 2900 direct DUSAY and hold.	
▼ Rwy 13 helicopter visibility reduction below 3/4 SM NA. For uncompensated Baro-VNAV systems, LNAV/VNAV NA below -19°C or above 54°C.			

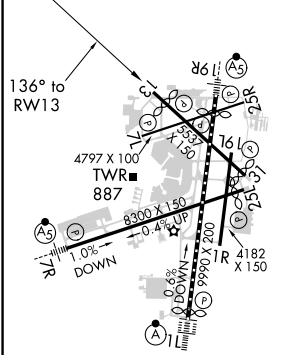
D-ATIS 126.4	MILWAUKEE APP CON 126.5 307.0	MILWAUKEE TOWER 124.575 269.05	GND CON 121.8 263.125	CLNC DEL 120.8	CPDLC
------------------------	---	--	---------------------------------	--------------------------	-------



EC-3, 25 FEB 2021 to 25 MAR 2021

EC-3, 25 FEB 2021 to 25 MAR 2021

ELEV 729	D	TDZE 671
-----------------	----------	-----------------



TDZ/CL Rwy 11
REIL Rws 1R, 7L,
13, 25L, 25R, and 31
HIRL Rws 1L-19R and 7R-25L
MIRL Rws 1R-19L, 13-31, and 7L-25R

CEXIS 2700 136° 2300 GUGGE 2300 136° FIKUP 2 NM to RW13 *1.360 RW13	*LNAV only.	2900	DUSAY	
	GP 3.00° TCH 54	↑	✦	
5.1 NM	3 NM	0.7 NM	1.3 NM	
CATEGORY	A	B	C	D
LPV DA	971-7/8		300 (300-7/8)	
LNAV/VNAV DA	1189-13/8		518 (500-13/8)	
LNAV MDA	1140-1	469 (500-1)	1140-13/8	469 (500-13/8)
C CIRCLING	1240-1	511 (600-1)	1240-1 1/2 511 (600-1 1/2)	1360-2 631 (700-2)