

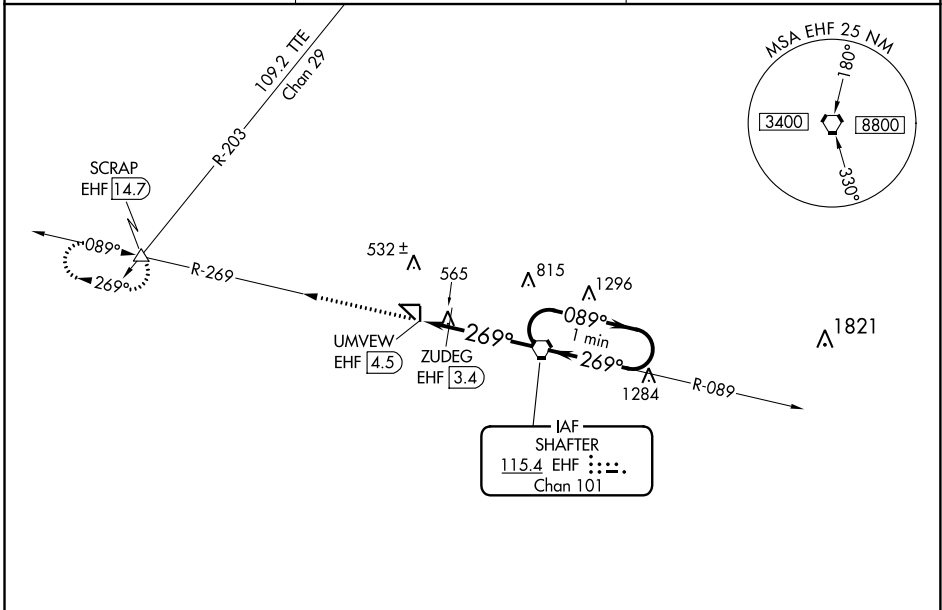
VORTAC EHF <b>115.4</b> Chan <b>101</b>	APP CRS <b>269°</b>	Rwy Idg TDZE Apt Elev	<b>N/A</b> <b>N/A</b> <b>425</b>
---	------------------------	-----------------------------	--

**VOR-A**  
SHAFTER-MINTER FIELD (MIT)

**NA** Circling to Rwy 17, 35, 8 and 26 NA at night. When local altimeter setting not received, use Bakersfield altimeter setting and increase all MDAS 40 feet and increase Cat C visibility to 1 3/4.

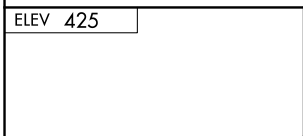
MISSED APPROACH: Climb to 4000 on EHF VORTAC R-269 to SCRAP INT/EHF 14.7 DME and hold, continue climb-in-hold to 4000.

AWOS-3 <b>121.125</b>	BAKERSFIELD APP CON * <b>126.45 270.3</b>	CTAF <b>122.9</b>
--------------------------	--	----------------------



SW-3, 25 FEB 2021 to 25 MAR 2021

SW-3, 25 FEB 2021 to 25 MAR 2021



4000 EHF R-269 SCRAP △ ZUDEG EHF 3.4 UMVEW EHF 4.5 EHF VORTAC One Minute Holding Pattern 089° → 2900 ← 269° 2600 *1040 when using Bakersfield altimeter setting. 1000* 1.1 NM    3.4 NM				
	CATEGORY A    B    C    D			
CIRCLING 1000-1    575 (600-1)    1000-1 1/2    NA 575 (600-1 1/2)				
ZUDEG FIX MINIMUMS				
CIRCLING 900-1    475 (500-1)    900-1 1/2    NA 475 (500-1 1/2)				

MIRL Rwy 12-30  
REIL Rwy 12 and 30

FAF to MAP 4.5 NM

Knots	60	90	120	150	180
Min:Sec	4:30	3:00	2:15	1:48	1:30