

# TWOLF THREE ARRIVAL

AL-264 (FAA)

MINNEAPOLIS, MINNESOTA

MINNEAPOLIS APP CON  
 126.95 335.5  
 118.725 (MSP RWY 35)  
 ANE ATIS  
 120.625  
 FCM ATIS  
 124.9  
 MIC ATIS  
 124.475  
 MSP D-ATIS ARR  
 135.35 239.275  
 STP ATIS  
 118.35

**TRGET**  
 N44°13.88'-W93°27.73'  
**VERTICAL NAVIGATION**  
**PLANNING INFORMATION**

MSP: Expect 11000  
 All other airports:  
 Turbojets: Expect 8000  
 Turboprops: Expect 7000

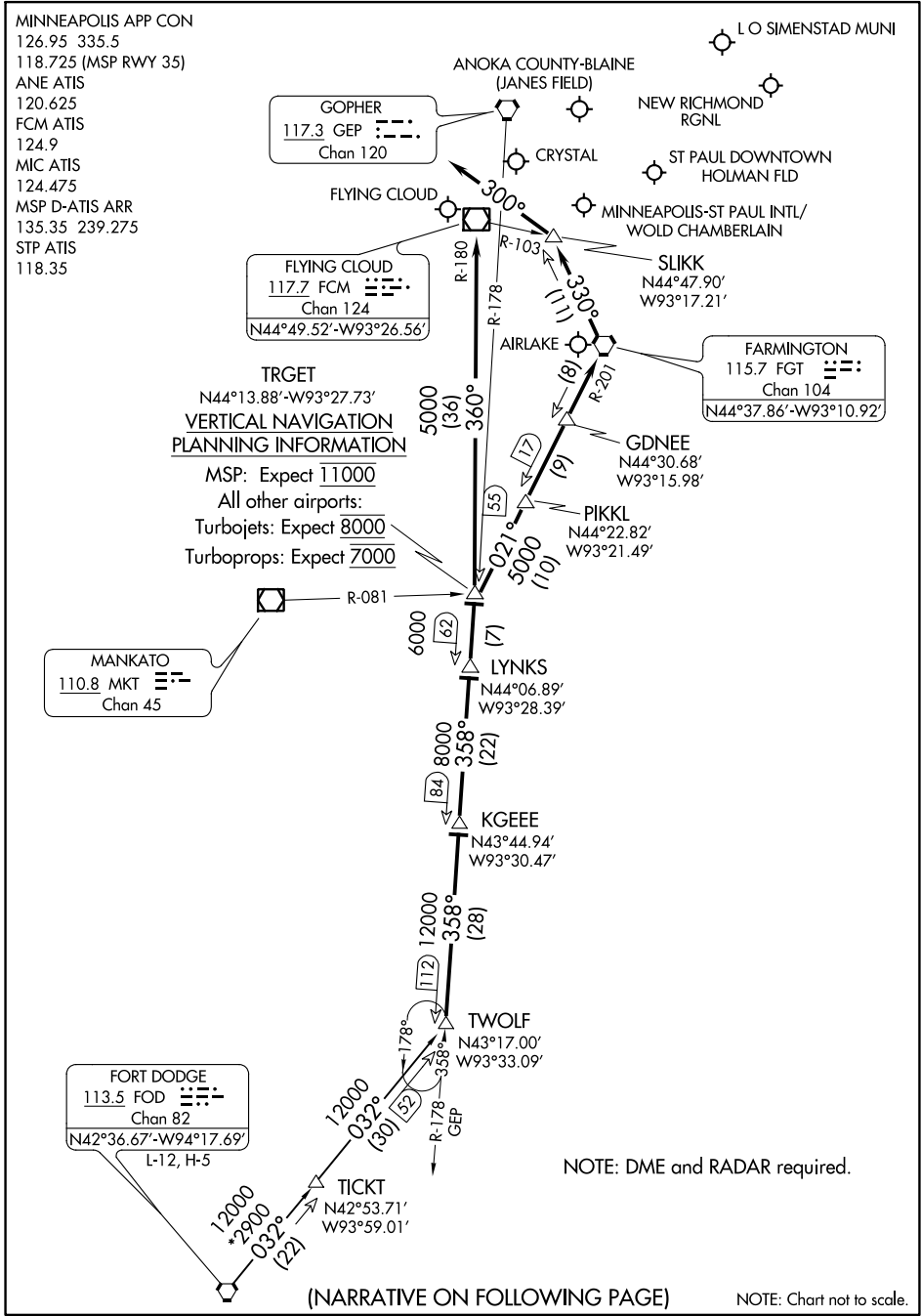
(NARRATIVE ON FOLLOWING PAGE)

NOTE: Chart not to scale.

NOTE: DME and RADAR required.

NC-1, 25 FEB 2021 to 25 MAR 2021

NC-1, 25 FEB 2021 to 25 MAR 2021



# TWOLF THREE ARRIVAL

(TWOLF.TWOLF3) 17AUG17

MINNEAPOLIS, MINNESOTA