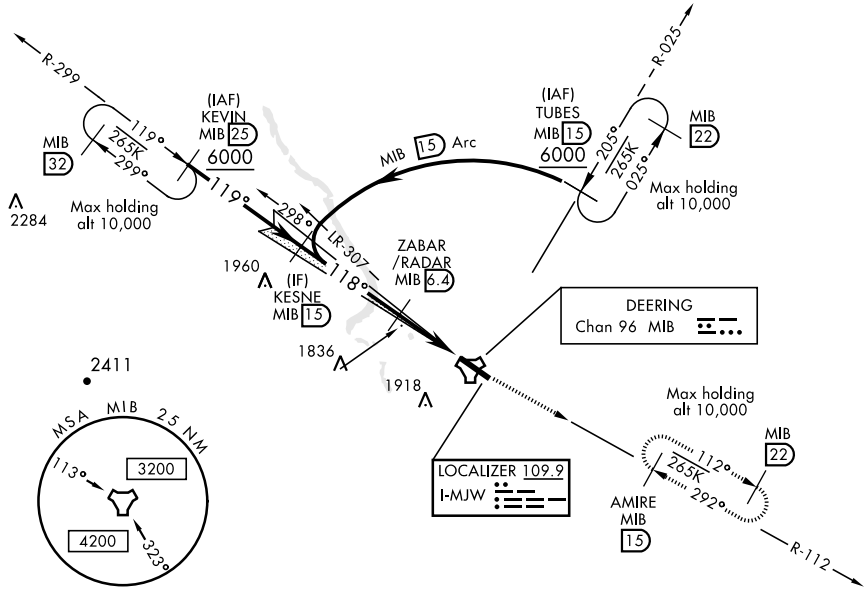


# ILS or LOC Y RWY 12

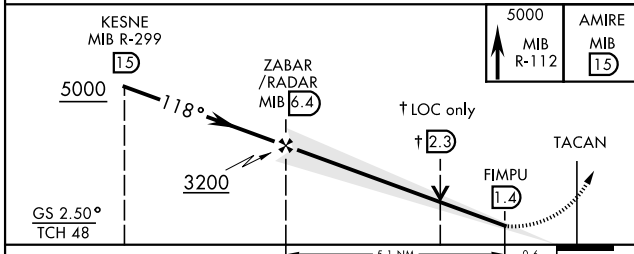
LOC I-MJW <b>109.9</b>	APCH CRS <b>118°</b>	Rwy Idg <b>13,198</b> TDZE <b>1666</b> Arprt Elev <b>1666</b>	AL-5013 [USAF]	MINOT AFB (KMIB)
* When ALS inop, increase RVR to 40 and vis to 3/4 mile. ** When ALS inop, increase CAT AB RVR to 55 and vis to 1 mile, CAT CDE vis to 1 1/4 miles.			ALSF-1 	MISSED APPROACH: Climb to 5000 via MIB TACAN R-112 direct AMIRE and hold.
ATIS * <b>278.8</b>	MINOT APP CON <b>119.6 363.8</b>	MINOT TOWER * <b>120.65 253.5</b>	GND CON <b>134.0 275.8</b>	CLNC DEL <b>326.2</b>

\*\*\* Circling not authorized N of Rwy 12-30.



## RADAR or DME REQUIRED

EMERG SAFE ALT 100 NM 4700



ELEV 1666	TDZE 1666
118° 5.7 NM from FAF 	
HIRL Rwy 12-30 FAF to MAP 5.1 NM	
Knots	60 90 120 150 180
Min:Sec	5:06 3:24 2:33 2:02 1:42

CATEGORY	A	B	C	D	E
S-ILS 12*	1866/24 200 (200-1/2)				
S-LOC 12**	2100/24	434 (500-1/2)	2100/40	434 (500-3/4)	
CIRCLING***	2120-1 454 (500-1)	2140-1 474 (500-1)	2180-1 1/2 514 (600-1 1/2)	2220-2	554 (600-2)

# ILS or LOC Y RWY 12

NC-1, 25 FEB 2021 to 25 MAR 2021

NC-1, 25 FEB 2021 to 25 MAR 2021