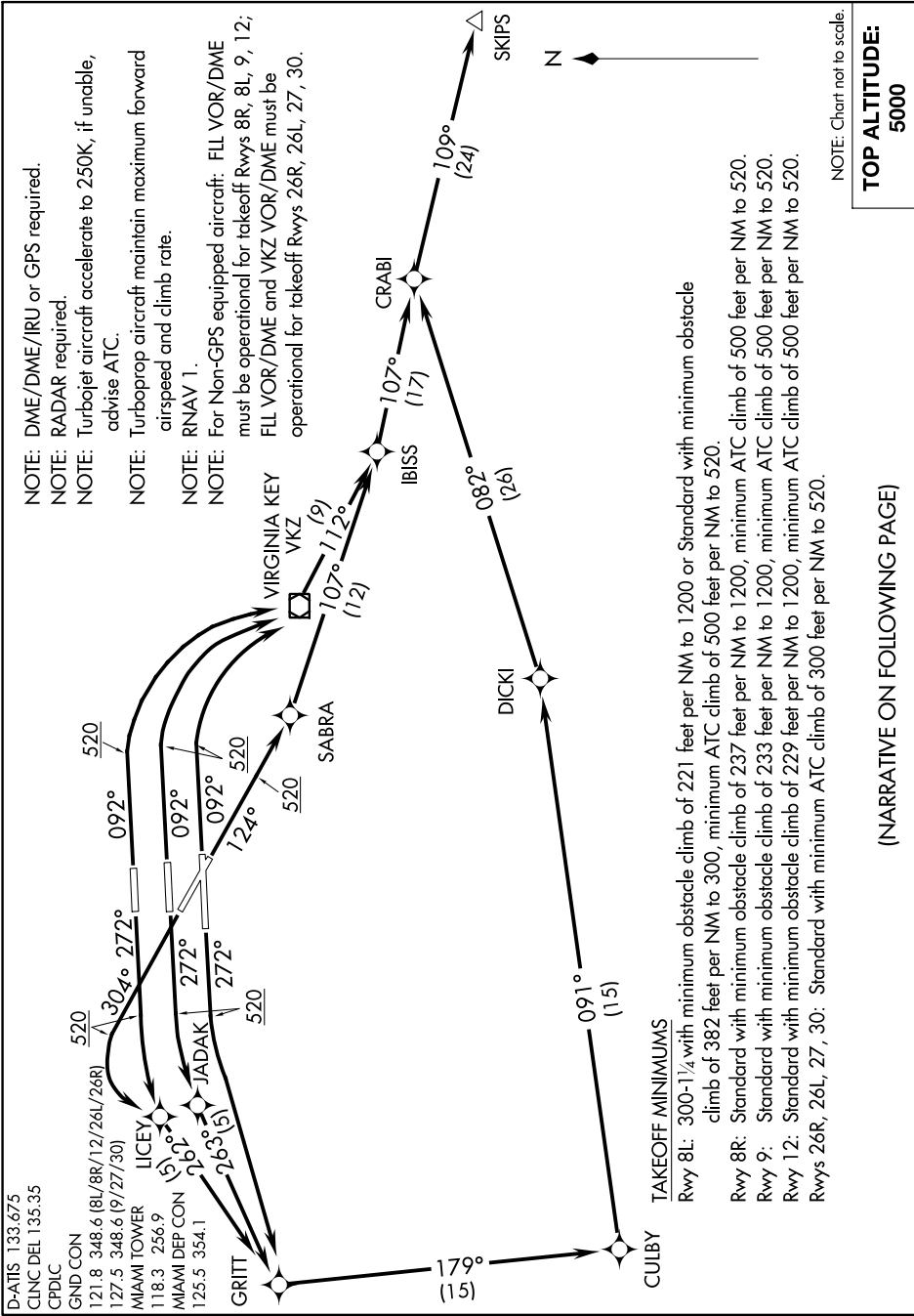


SKIPS TWO DEPARTURE (RNAV)

SE-3, 25 FEB 2021 to 25 MAR 2021

D-ATIS 133.675
 CLNC DEL 135.35
 CPDLC
 GND CON
 121.8 348.6 (8L/8R/12/26L/26R)
 127.5 348.6 (9/27/30)
 MIAMI TOWER
 118.3 256.9
 MIAMI DEP CON
 125.5 354.1

NOTE: DME/DME/IRU or GPS required.
 NOTE: RADAR required.
 NOTE: Turbojet aircraft accelerate to 250K, if unable, advise ATC.
 NOTE: Turboprop aircraft maintain maximum forward airspeed and climb rate.
 NOTE: RNAV 1.
 NOTE: For Non-GPS equipped aircraft: FLL VOR/DME must be operational for takeoff Rwys 8R, 8L, 9, 12; FLL VOR/DME and VKZ VOR/DME must be operational for takeoff Rwys 26R, 26L, 27, 30.



NOTE: Chart not to scale.
**TOP ALTITUDE:
 5000**

(NARRATIVE ON FOLLOWING PAGE)